

**UNITED STATES DISTRICT COURT  
FOR THE WESTERN DISTRICT OF TEXAS  
EL PASO DIVISION**

LULAC, et. al.,	)(	
	)(	
<i>Plaintiffs</i>	)(	
	)(	
Eddie Bernice Johnson, Sheila Jackson-Lee	)(	
Alexander Green, and Jasmine	)(	
Crockett	)(	
	)(	
<i>Plaintiff-Intervenors</i>	))	
	)(	
v.	)(	Case No.: EP-21-CV-00259-DCG-
	)(	JES-JVB [Lead Case]
GREG ABBOTT, in his official capacity	)(	
As Governor of Texas, et. al.	)(	
	)(	
<i>Defendants</i>	)(	

**SECOND AMENDED COMPLAINT OF PLAINTIFF-INTERVENORS**  
**EDDIE BERNICE JOHNSON, SHEILA JACKSON-LEE, ALEXANDER**  
**GREEN, AND JASMINE CROCKETT**

**Background**

1. This is an action to enforce Plaintiff-Intervenors rights under the Fourteenth and Fifteenth Amendments to the United States Constitution and under Section 2 of the Voting Rights Act, 42 U.S.C. § 1973 et seq. Plaintiff-Intervenors Johnson, Jackson-Lee and Green are current members of the United States Congress and Crockett is a voter who resides in Texas 30th Congressional District now represented by Congresswoman Johnson. All of the applicant intervenors are not only voters but regularly vote and intend to vote in the 2022 Congressional elections and thereafter. Plaintiff-Intervenors bring this action requesting declaratory and permanent injunctive relief against the State of Texas to challenge the 2021 Congressional Plan C2193 adopted by the Texas State Legislature. The adopted Plan is

retrogressive, dilutes the voting strength of African American and Latino voters because, and, under the totality of circumstances, African-American and Latino voters do not have an equal opportunity to elect candidates of their choice to the United States Congress. This is so both in the Harris County-Fort Bend Region and in the Dallas-Fort Worth Metroplex Area.

2. The plan is also heavily infected with an intent to discriminate, on the basis of race and ethnicity, against African American and Latino voters, in violation of both the Voting Rights Act and the Fourteenth and Fifteenth Amendments to the United States Constitution. The 9th, 18<sup>th</sup>, and 30<sup>th</sup> Congressional Districts were all close to the optimal size of 766,000 persons for districts after the 2020 census. The 9th District in particular was only 3,611 persons above the optimum number of persons for a Texas Congressional District. The drastic changes made by the Texas Legislature removed tens of thousands of voters from this optimum-sized district, then added tens of thousands of new voters to the district. These actions were taken in order to ensure that white voters would be able to control a majority of the voting districts in the area.

3. Of the 10 Congressional Districts in the Houston area, white voters were drawn to control 7 of them, even though whites are only 33.6 percent of the area population. Instead of being drawn a new Congressional District that they could control, Latino voters were packed into existing African-American and Latino opportunity districts, or cracked into white- or Anglo-dominated districts. Latinos and African-Americans were sliced and diced to make the map of the region achieve its discriminatory purpose and objective. Congressional District 9, though in need of essentially no surgery, received 12 new precincts from Fort Bend County; 13 new precincts from Brazoria County; 10 new precincts from the 18<sup>th</sup> Congressional District in Harris County; and lost 11 precincts in Fort Bend County. Precincts in the Hobby

Airport area were removed from Congressional District 29 and moved into Congressional District 9. As a result, the already optimal-sized district became a completely new district. Performance figures show that the African-American voter percentages and the related performance of the 18<sup>th</sup> decreased. Thus, beyond losing historical precincts that had been in the historic precinct since the time of Barbara Jordan (during the 1970s) it retrogressed in terms of effectiveness.

4. The 30th Congressional district lost voters to the 6th Congressional District. The minority voters who were lost from that district were placed into the 6th in order to provide population to the 6th Congressional District under circumstances where the voters who were cracked out of the 30th would have no ability to elect the candidate of their choice. Further, the 30th was reduced from an above 50 percent Black Citizen Voting Age Majority District to a below 50 percent Black Citizen Voting Age Majority District. Besides being drawn to ensure that white voters would continue and dominate the majority of area districts in the Harris and Fort Bend Area as well as the Dallas Fort Worth Metroplex Area, the districts were designed to prevent the creation of either a new Latino opportunity district or a new Minority Coalition District with a plurality of Latino population from being drawn in either area.

5. In the 6<sup>th</sup> Congressional District, a naturally occurring minority district was taking shape and growing. To stymie that rise in minority voters, the map drawers cut out voters from the 6<sup>th</sup> and placed them in the 30<sup>th</sup> Congressional District, thereby requiring displacement of existing voters in the nearly optimum sized district.

6. A ruling by this Court is necessary to protect the voters of the 9th, 18th and 30th Congressional Districts. A ruling by this Court is also necessary to protect the voters in the Harris County and Fort Bend Area as well as the Dallas Fort Worth area. Intervenors note the Court's prior ruling respecting standing and seek to challenge only the 9th, 18th and 30th

Furthermore, absent corrective action from this Court, this new redistricting plan will continue to dilute the voting strength of Texas' African American and Latino citizens and deny them fair representation in the United States Congress. Plaintiff Intervenor Johnson, Jackson-Lee, Green and Crockett seek the implementation of redistricting plans that will not dilute the voting strength of African-American voters in Texas, the areas of the State in which they are placed or that will be retrogressive.

## **I. JURISDICTION**

7 Plaintiff-Intervenor's complaint arises under the United States Constitution and federal statutes. This Court has jurisdiction over this action under 28 U.S.C. §§ 1331, 1343(a)(3) and (4), and 42 U.S.C. § 1988.

8. Venue is proper in this Court pursuant to 28 U.S.C. § 1391(b).

9. Plaintiff-Intervenor Johnson seeks declaratory and injunctive relief pursuant to 28 U.S.C. § 2201 and 2202.

## **II. PARTIES**

10. Plaintiff Congresswoman Eddie Bernice Johnson is an African-American who resides in Dallas Texas and represents Congressional District 30. She has served in Congress since 1993. Congresswoman Johnson was the first African-American female Chairperson of a Congressional Subcommittee. She is a former Chair of the Congressional Black Caucus and currently a member of the House Transportation and Infrastructure Committee, the Aviation, Highways and Transit, and Water Resources and Environment Subcommittees. Congresswoman Johnson has worked to represent her district where she ably represents African-American voters and a coalition of African-American and Latino voters. She is also a registered voter.

11. Congresswoman Sheila Jackson-Lee is in her fourteenth term in the United States Congress, representing the historic 18<sup>th</sup> Congressional District held previously by the late

Barbara Jordan and Mickey Leland. She is a Member of the Judiciary and Homeland Security Committees and is the founder and co-chair of the Congressional Children's Caucus. She has been an advocate for immigration reform during her tenure in Congress and has worked to represent her district, Congressional District 18, where she ably represents African-American voters and a coalition of African-American and Latino voters. She is also a registered voter.

12. Congressman Alexander Green is in his ninth term in Congress. He is a member of the Financial Services and Homeland Security Committees. He is the Chair of the Financial Services Sub-Committee on Oversight and Investigations as well as the Chair of the Texas Democratic Congressional Delegation. As a former elected judge of a Harris County small claims justice court as well as a former president of the Houston Branch NAACP, he judiciously represents African American voters as well as a coalition of African American, Latino, and Asian American voters in Congressional District 9. He is also a registered voter.

13. Jasmine Crockett is a voter who resides both in the current Congressional District 30 and in the newly adopted version of Congressional District 30. She is involved in civic and political affairs throughout the Congressional District. As a Representative in the Texas Legislature she took the lead in attempting to prevent retrogression and vote dilution of the voters in the 30<sup>th</sup> Congressional District. She lives in Dallas and as a State Representative she tendered proposed changes to Congressional District 30 that would have permitted it to continue as a 50 percent African-American Citizen Voting Age population district, the amendment, however, failed to pass. She is a constituent of Congresswoman Johnson and is a registered voter who intends to vote in future Congressional elections.

14. Defendant the State of Texas is a political subdivision covered under the provisions of the Voting Rights Act and responsible for the actions of its officials with regard to state-wide redistricting. Plaintiffs bring claims against the State of Texas solely as to the statutory claims.

15. Defendant Greg Abbott is the duly elected and acting Governor of the State of Texas. Under Article IV, Section 1, of the Texas Constitution, he is the chief executive officer of the Defendant State of Texas. He is sued in his official capacity.

16. Defendant John B. Scott is the duly appointed and acting Secretary State of the State of Texas. He is sued in his official capacity.

### III. FACTS

17. The individual Congresspersons are all elected with substantial support from the African-American and Latino voters in the districts which they represent. The individual Congresspersons are concerned about the welfare of the individual districts that they represent and took an active role in attempting to ensure that appropriate districts were drawn that were not retrogressive districts as part of larger vote dilution schemes to improperly empower white voters or were drawn with discriminatory motivation. Crockett has been an important member of Congressional District 30, being actively engaged in the affairs of the district and attempting to uplift the population even before being elected to office. She was one of the primary legislators seeking to prevent retrogression or vote dilution in or discrimination in the drafting of the 30<sup>th</sup> Congressional District. She is and intends to remain an active voter, including in the 2022 and later elections to fill the position of Congressperson for the 30<sup>th</sup> Congressional District.

18. Section 10301 of Title 52, Voting and Elections, formerly classified to section 1973 of Title 42, applies nationwide and prohibits voting practices and procedures that result in the

denial or abridgement of the right of any citizen to vote on account of race, color, or membership in a language minority group.

19. After the last decennial census, the Texas Congressional apportionment increased from 36 representatives to 38 representatives, due to an overall population increase of approximately 4 million persons. Texas did not put the kind of emphasis on identifying persons in the State for purposes of being counted in the census as did other States, and as a result it fell just short of being entitled to 3 additional Congressional districts. Non-whites accounted for approximately 95 percent of the growth. This is after the last decade when Texas' Congressional Representation increased from 32 seats to 36 seats on the basis of growth in Texas of which approximately 79 percent was attributable to African-Americans and Latinos alone.

20. Proportionally, voters of color in Texas are underrepresented in the U.S. House of Representatives in the new map, with white voters being able to control at least 24 of the 38 seats, but more than likely, at least 26 seats. The drafting scheme involved: (a) packing minority voters into districts that were already minority opportunity districts, and therefore, needed no additional minority voters; (b) moving minority voters into districts where they would be outvoted by white voters; and (c) a new third feature that involves placing minority voters in districts where they would be outvoted by progressive white voters.

#### **9<sup>th</sup> and 18<sup>th</sup> Congressional Districts**

21. During the 2021 redistricting process, Senator Borris Miles and Representative Senfronia Thompson attempted to present plans for the 9<sup>th</sup> and 18<sup>th</sup> Congressional Districts that did not involve the unnecessary surgery on the districts that occurred in the map similar to what had occurred in 2011. Senator Miles, in a Senate presided over by Lieutenant Governor Dan Patrick and in response to rules or practices utilized by the Senate Redistricting Committee

under the leadership of its Chairman Senator Joan Huffman, was not able to formally file the proposal that would provide a proper remedy to what the Senate had proposed. Senator Huffman indicated at the October 18 session that members of Congress initially drew up the map that drastically changed 9 and 18, and that maps attempting to modify those changes were not accepted because they did not have bipartisan support or did not account for changes to neighboring districts. The Senate, thereafter, adopted a map that was even more retrogressive as to the 9<sup>th</sup> and 18<sup>th</sup> than is the current proposed map. One plan he put forth unsuccessfully to try and address the retrogression and unnecessary surgery to the 9<sup>th</sup> and 18<sup>th</sup> Congressional Districts was C2131. In the hastily called House Committee hearing on redistricting, surprisingly called 48 hours before the scheduled hearing by Chairman Hunter who may have been responding to pressure from anti-minority forces, and called on the same day the hearing on the State House Map was to take place without reasonable notice to members of the Black Caucus and even members of the House Redistricting Committee. State Representative Toni Rose, Vice-Chair of the Redistricting Committee and a member of the Texas Legislative Black Caucus, was also not provided with this information on a timely basis. Representative Thompson attempted to introduce an amendment tendering essentially the same remedial map as Senator Miles attempted to present in the Senate, at the hastily called House Committee hearing to consider the Senate adopted map.

22. The House used this adopted House Map even after House Chairman Hunter assured Congresswoman Jackson-Lee, Congressman Green, and Texas Black Caucus Vice-Chair Ron Reynolds that they would not use the Senate map as a basis for creating the Congressional Plan to be voted on by the House. *See* Letter to Legislators from Congresspersons Jackson-Lee and Green which is attached hereto and incorporated for all purposes as if fully set forth herein. As were many of the members of the Legislative Black Caucus, Congresspersons Jackson-Lee and



Green were surprised by the short notice of a hearing which came on the morning the House was scheduled to debate the new proposed State House Map. The African-American Vice-Chair of the Redistricting Committee was also unaware that the hearing notice was to be sent out. The hearing on the Senate Map was not only a surprise because of these representations but also because the hearing was set just 48 hours after the House was to debate its map. Chairwoman Senfronia Thompson, the Dean of the House, made a proposal which essentially took the limited territory from the 3 minority opportunity districts in Harris and Fort Bend Counties (now including Brazoria) and reconfigured them to lessen the retrogression and dilution as to those districts. This was done specifically because a full fix that would have involved impacting 7 as opposed to 4 districts would not be permitted. This proposal was adopted, though many Members changed their yea votes to nay shortly after the formal vote.

23. A full remedy was not supported by the Texas Legislative Leadership necessary for it to be considered. A small exchange of voters was also made between the 7<sup>th</sup> and 18<sup>th</sup> Congressional Districts. Chairman Hunter supported this change. A full remedy as provided for in C2131 or other maps available to the Legislature was not supported by the Texas Legislative Leadership and this was necessary for it to be favorably considered. Support for such a full remedy would impair or defeat the chances of securing the desired white voter domination in the area.

### **30<sup>th</sup> Congressional District**

24. Intervenor Crockett unsuccessfully submitted an amendment, C2139, to the proposed State Congressional plan that would have prevented retrogression of the 30<sup>th</sup> Congressional District. This plan demonstrated how one could avoid retrogression and maintain the district's status as a majority African-American CVAP District.

25. Congressional District 30 was unnecessarily reduced below a Citizen Voting Age population of 50 percent and voters were cracked out of the district to be placed in areas where

their votes will essentially not count. Voters from the 6<sup>th</sup> Congressional district were added to the 30<sup>th</sup> Congressional District to prevent a naturally occurring minority coalition district and ensure continued dominance of white voters in the 6<sup>th</sup>. Movement of these voters required displacement of other voters already with Congressional District 30, so a number of African-American voters were cracked out of the district to make way for the new voters. Congressional District 30 was near the optimal size so such surgery was unnecessary. Intervenor Crockett introduced an amendment to the retrogression, vote dilution or racial gerrymander but was not successful in achieving passage. The map tendered by Representative Crockett did not cure all of the legal deficiencies in the area, but was designed to simply restore the 30<sup>th</sup> in a limited way as to be acceptable otherwise to the Legislative Leadership. However, the proposal was still not acceptable. The population increases in both the Harris County and Fort Bend Area as well as the Dallas Fort Worth Metroplex Area each justified the creation of new Congressional minority opportunity districts in each region. The 2021 plan did not create any additional minority opportunity or other Congressional districts in the Dallas Fort Worth Metroplex region, but it did create a new seat in the Harris County/Ford Bend County area. The new Harris County/For Bend seat will be dominated by white voters. A seat could have been drawn in this area that was either majority Hispanic CVAP or majority BHCVAP.

### **Retrogression**

26. In the congressional plan passed by the Texas Legislature in 2021, Congressional Districts 9, 18 and 30 were drawn in a way that causes retrogression of the minority voter strength and further undermines the ability of African-Americans and Latinos to effectively participate in the political process in those areas, elect the candidates of their choice, and intentionally discriminates against voters in those districts. Clearly, map drawers diluted

African-American and Latino voters' voting strength. Communities of interest or

neighborhoods were cracked or split and minorities were placed in districts for the purposes of enhancing white voter power. In the Houston area, there was an area racial gerrymander where black voters were moved between different Congressional Districts so that white voters would dominate and to avoid creating naturally occurring districts that would empower minority voters or districts that are required under Section 2 of the Voting Rights Act.

27. Black and Brown voters who represented political problems in Congressional Districts such as 14, 22 and 36 were moved from those districts so that white voters would dominate.

28. Congressional Districts 18 and 30 are retrogressed in the adopted plan and they are retrogressed so that area vote dilution and/or a racial gerrymander of each area likely would take place. Both took on unnecessary new voters. Congressional Districts 9, 18 and 30 are all minority opportunity districts. The new plan reduced the Black Citizen Voting Age population of the 30<sup>th</sup> from 51 percent to 48 percent, and the Texas Legislature declined to adopt an amendment that would have cured this retrogression. African-American voters were moved from Congressional District to Congressional District to ensure white voter dominance in the Metroplex. Black and Brown voters were moved from the 6<sup>th</sup> to the 30<sup>th</sup> and from the 30<sup>th</sup> to the 32<sup>nd</sup> and from the 5<sup>th</sup> and 24<sup>th</sup> to the 32<sup>nd</sup> in order to accommodate this scheme. Congressional District 24 had become a majority non-white district but minority residents and voters were purged from the district so that it is now safely a predominately white district. The Legislature was mindful of electoral changes that took place in different districts around Texas where minority voters had become dominant or controlling in different elective districts, so in large part the new maps were drawn in order to hold minority voters at bay and prevent the natural exercise of their power in statutorily mandated, constitutionally mandated or naturally occurring districts. With the infusion of many additional white voters into the seats in the

metroplex held by white Congresspersons who were voted in by white voters, the 32<sup>nd</sup> Congressional District saw an incredible rise in its minority and Black and Hispanic population and voter percentages. Its overall non-white population increased from 53.1 percent to 67.8. At the same time one-third of the Blacks and Hispanics were removed from Congressional District 24. The Legislature also rejected and/or spurned attempts to cure the retrogression in Congressional District 18. The Legislature was locked in on discrimination in both the 30<sup>th</sup> and the 18<sup>th</sup>, as well as the 9<sup>th</sup>, because their configuration in the proposed map was part of a greater area scheme to dilute minority voting strength and/or racially gerrymander the area to enhance white voter strength.

### **Vote Dilution**

29. As drawn in the congressional plan passed by the Texas Legislature, congressional districts in Harris, Fort Bend, Brazoria, Galveston and other area counties as well as in Dallas, Tarrant, Johnson and neighboring counties dilute the voting strength of African-American and Latino voters, causing an inequality in opportunities for minority voters to elect their preferred representative(s).

Black and Brown voters and voters who voted with them were moved into Congressional District 7 to strengthen that district on behalf of the white incumbent. Congressional District 7 was near the optimum size for districts in the 2021 round of redistricting, but the map drawers moved nearly a quarter of a million voters from the African-American Opportunity District in Congressional District 9 in order to strengthen Congressional District 7. This major transfer of voters then required the map drawers to crack out 10 precincts from allied communities of interest that had worked together in the 18<sup>th</sup> Congressional District and place them in the 9<sup>th</sup>. The Latino opportunity District CD29 was negatively impacted and lost an important community of interest that was placed in the 9<sup>th</sup> Congressional District. The transfer of these voters was part of

Case 3:21-cv-00259-DCG-JES-JVB Document 619 Filed 10/19/22 Page 13 of 62  
a racial gerrymander. See Exhibit G, Statement of Expert George Korbel. Notably the compactness score for Congressional District 7 was negatively impacted by the new inclusion of the voters from the 9<sup>th</sup> Congressional District.

30. The dilution included cracking and dispersing Black and Brown voters, failing to draw new Latino Districts, packing of minority voters, and destructing or failing to draw naturally occurring districts, which would provide greater influence to minority voters. Furthermore, the Legislature failed to draw minority coalition districts between Black and Brown voters, who vote cohesively in areas where they are likely to constitute a majority of the citizen voting age population, but where white voters have voted as a block statewide (such as in the Dallas/Fort Worth Metroplex and in the Harris/Fort Bend County Area). That is another way of denying Black and Brown voters an election in which they decide the candidates they prefer and choose. When they do get to choose, Black and Brown voters have voted cohesively in recent national, state and presidential elections, among others. Black and Brown voters have voted cohesively in the recent United States Senate race in 2018, the Lieutenant Governor's race in 2018 and the Presidential campaigns in 2016 and 2020, among many others. The African-American Congresspersons all have strong African-American and Latino support with Congresswoman Jackson Lee who recently prevailed in Latino precincts when opposed by opponents with Spanish surnames.

31. The 2021 Congressional plans unnecessarily split communities of interest from the 9<sup>th</sup>, 18<sup>th</sup>, and 30<sup>th</sup> Congressional Districts; removed important economic engines from the 9<sup>th</sup> and 18<sup>th</sup>; packed Latino voters unnecessarily into the 18<sup>th</sup> and 9<sup>th</sup> Congressional Districts, and were purposefully designed to undermine or frustrate effective and long-term voter coalitions in the area as well as effective minority voter participation. The new Congressional District in the Houston area will be dominated by white voters, even though Latinos were the group most responsible for the state's population increase.

**Other Factors**

32. After the last redistricting cycle, federal courts found the continued presence of the Senate or Arlington Heights Factors in Texas, Elections in Texas continue to be racially polarized. Statewide officials in Texas have become more anti-Black and anti-Brown in their public statements and overt actions particularly in 2021. Massive election revisions were adopted by the 2021 Legislature, many of which are intentionally discriminatory against and target African-Americans or Latinos. Considering that the State adopted many other discriminatory laws such as laws banning the utilization of critical race theory in public schools, it is important to mention that critical race theory has never been taught or studied in Texas public grade schools but now is being used to erase or diminish the teaching of legitimate history and facts regarding African Americans and their history and culture in Texas and the U.S. The sponsors of the Legislation made it clear that white voters did not want to feel bad about what their ancestors did and they did not want such taught to their children. Even the rhetoric was racially-charged: When Black, Brown and some white legislators left the State, some white public officials indicated that they should be arrested and “quartered” until the voting takes place. Such language represents vestiges of Texas’ Jim Crow past, and its return to the present. The irregularities during the session were overtly racial, and they include, but are not limited to:

- i. The refusal to permit participation by the Chairperson of the Legislative Black Caucus, Nicole Collier, in Election Committee Hearings;
- ii. the refusal of the Senate to put an African-American lawmaker on any election or redistricting conference committee;
- iii. the refusal of the Senate to put a Latino lawmaker on the Congressional redistricting bill conference committee;
- iv. the refusal of the Senate to hear virtual testimony on the redistricting bill even though the minority community in Texas was hugely impacted by the coronavirus pandemic;
- v. instead of drafting its own Congressional map, the House decided to use the Senate adopted map as a base map for its work, even though House leadership was aware of the discrimination that existed in the Senate plan;

vi. instituting a rule that required before you could present an amendment to the proposed map for consideration in the Senate Committee, you must receive the consent of all Congresspersons who would be impacted;

vii. the refusal to receive any map for consideration in the Senate Redistricting Committee unless it was plugged into the proposed statewide map drawn by the white Congresspersons;

viii. the refusal for transparency and appropriate notification. For example, on the day that the House Redistricting Map for the Texas House of Representatives was to be considered, the Chairman of the House Redistricting Committee made a surprise announcement that the House would have a hearing on a Congressional Plan in 48 hours and that the Senate Map would provide the base map for this process;

ix. the implementation of gate-keeping rules to prevent Black and Brown lawmakers from amending discriminatory or racial gerrymandering tactics, One example is that lawyers were brought in for the House debate on the Congressional bill, so that any amendments could no longer simply be authorized by the Redistricting Chair or the Speaker. This group of lawyers for the conservative white leadership were required to approve potential amendments before they were accepted for consideration on the floor; and

x. During the House debate on the Congressional Map Intervenor Applicant Crockett and others were required to deliver proposed Amendments to designated Representatives who would take them to a room in which they could not enter for the proposed Amendment to be reviewed by white lawyers before it could be offered.

33. African-Americans in Texas generally vote as a group and are politically cohesive.

34. Latinos in Texas vote as a group and are politically cohesive.

35. Latinos and African-Americans in Texas vote as a group and are politically cohesive.

Latinos and African-Americans in Congressional District 30, Congressional District 9 and Congressional District 18 vote as a group and are politically cohesive in ensuring the continued character of the districts. Latinos and African-Americans in Dallas and Tarrant Counties vote as a group and are politically cohesive. Latinos and African-Americans in Harris, Fort Bend, Galveston and Brazoria counties vote as a group and are politically cohesive.

36. Anglos in Texas and in the counties included in the Houston/Fort Bend gerrymander and those in the Dallas/Fort Worth Metroplex gerrymander generally vote as a group, are politically cohesive and vote sufficiently as a block to defeat the preferred candidate of Latino and African-American voters absent fair and equitable majority-minority single member districts. This has

37. The Senate Committee on Redistricting did not accept any amendment for consideration that was not agreed to by any and every Congressperson affected by the change, and further any proposed change had to use the proposed map as a basis or beginning from which to draft them. Empowering these white Congresspersons to have the authority to veto any changes to African-American opportunity districts was in effect a policy of granting them overseer status over minority opportunity districts such as Congressional Districts 9, 18 and 30. The Congressional map has been drawn up primarily by conservative white Congresspersons who ultimately determine which maps would be considered and have generally voted against the interests of the African-American community. One conservative white Congressman informed Congresswoman Jackson Lee that he was the principal draftsman. Despite attempts by Senator Borris Miles, Senator Royce West and Senator Carol Alvarado to stop the retrogression and vote dilution of the districts and the Harris Fort Bend and Dallas Fort Worth Metroplex areas, the Senate adopted an excessively discriminatory plan that changed the 18<sup>th</sup> from an African-American opportunity district to a democratic district.

38. The State adopted a retrogressive version of Congressional Districts 9 and 30 as well. The House through the efforts of Representative Thompson cured some, but not all, of the retrogression and dilution in Congressional Districts 9 and 18. Through the efforts of Intervenor Crockett some of the retrogression and dilution in Congressional District 30 was modified. The Congressional Plan was modified in the House but was passed in the House by an overwhelming vote from white members even though minority members overwhelmingly opposed the map. Because the House version was different from the Senate's, a Conference Committee with no Black or Latino senators from the Senate was appointed and it agreed to many of the House changes. Thereafter the Conference Committee version was signed into law by the Governor .



39. Public opposition to this map was overwhelming in both the Senate and the House, but particularly from members of Texas' minority community. Minority legislators and their allies spoke with great depth and clarity so it was clear that the legislature was aware of the discriminatory impact the bill would have. The public registered overwhelming opposition to this plan and the public provided in-depth information regarding the plan and its discriminatory impact. Whites in Congress drew up the bill for their advantage and were required to approve any changes to what they originally drew up. The Legislature embraced and adopted this approach. By so empowering white Congresspersons to become the overseers of minority opportunity districts.

40. Further, the actions of the Legislature in reference to limiting testimony in the Senate, giving short notice for the House Committee hearing, not permitting amendments to be considered in the Committee, and the failure of the Senate to put a minority on the Conference Committee at a critical point when the bill was considered in the special-called session, (and the many other irregularities), all support the clear fact that the Legislature's action in adopting this map was infused with discrimination. Many minority legislators and non-minority legislators who supported the interests of minority voters all voiced strong, lengthy and well-reasoned opposition to the proposed map. Nevertheless, the white lawmakers adopted the discriminatory plan to benefit conservative white votes and maintain and sustain white majority rule and power, even as the state's population has reached a point in which the majority of its citizens are minority.

41. It is revealing how the white majority used population data in the treatment of Black and Latino voters. This is indicative of discriminatory intent. In the case of African Americans, majority party leaders used voting age population data to justify actions in reference to Black districts. By contrast, they used different data that included citizenship to justify actions in reference to Latino voters. In each instance they chose to justify the plan as to these two minority

42. During the 2021 legislative process, the Texas Legislature had before it or was aware of plans for the Congressional districts that did not dilute the voting strength of African-American and Latino voters. Despite that, the Legislature rejected those plans for plans that did not afford minority voters an equal opportunity to elect candidates of their choice. It also utilized rules and procedures to prevent the receipt of other plans that limited minority vote dilution.

43. Numerous plaintiff groups filed suit in October and November of 2021 challenging the 2021 adopted Congressional plans as violating the Equal Protection Clause of the 14<sup>th</sup> Amendment and Section 2 of the Voting Rights Act.

44. Because Texas was no longer a covered jurisdiction under Section 5 of the Voting Rights Act of 1965 as a result of the *Shelby County v. Holder* decision of the United States Supreme Court, it was not required to obtain federal preclearance before implementing its enacted redistricting plans. With regards to the Congressional plan in 2011 when Texas was covered and when similar actions were taken as were taken this time, the D.C. Court noted that the Department of Justice and Intervenors (many of whom are Plaintiffs in the instant action) presented more evidence of intentional discrimination than the court had room to discuss. *Texas v. United States*, 887 F. Supp. 2d 133, 162 n. 32 (D.D.C. 2012). Specifically, the Court found that the way in which the State had carved apart the Congressional districts being represented by African-American members of Congress could be explained only by an intent to discriminate against minority voters in the districts. *Id.* at 160-61.

45. While the House this year adopted a plan that did make improvements on the Senate map, it did not come close to eliminating the retrogression, vote dilution, racial gerrymandering nor the unconstitutional intentional discrimination harm to African-Americans and Latinos.

46. As urged by these Congresspersons throughout this process the minority population

more than sufficient to support an additional, reasonably-compact district in which minority voters, especially Latino voters, would have an opportunity to elect the candidate of their choice.

47. There is sufficient Latino population in the Dallas-Fort Worth metroplex to construct a reasonably-compact district in which Latino voters or Latino voters in cooperation with Black voters have an opportunity to elect their candidate of choice. This district can be drawn while still maintaining the ability of black voters to elect their candidates of choice in Congressional Districts 30, 32 and 33.

48. There is sufficient Latino population in the Harris County-Fort Bend Area to construct a reasonably-compact district in which Latino voters have an opportunity to elect their candidate of choice. This district can be drawn while still maintaining the ability of black voters to elect their candidates of choice in Congressional Districts 9 and 18.

49. During the special session, advocacy groups and elected officials representing minority communities pointed out the statutory and constitutional flaws still present in the Court's interim plan and urged that these flaws be corrected. The failure to create a new Latino opportunity district in the Dallas-Fort Worth region and/or the Harris County-Fort Bend County region is a remnant and perpetuation of the state's intent to discriminate against and dilute the voting strength of African-American and Latino voters. That resulted in the creation of 60 percent or greater of Texas Congressional districts that are white dominated and/or likely to elect white voter candidates of choice.

50. The failure to remedy the intentional cracking of a cohesive community of color in the congressional plan in Congressional Districts 9, 18, and 30 are remnants of and perpetuation of the state's intent to discriminate against voters of color.

51. The failure to remedy the retrogression of Congressional Districts 9, 18 and 30, the removal of economic engines from the 9<sup>th</sup> and 18<sup>th</sup> and unnecessary surgery, including cracking

intent to discriminate against voters of color that persists in the 2021 adopted Congressional plan.

Those factors are compounded by the dilution of minority voting strength, including the unnecessary packing of Latino voters within the 9<sup>th</sup>, 18<sup>th</sup> and 30<sup>th</sup> Congressional Districts and in the Harris County/Fort Bend Area and the Dallas/Fort Worth Metroplex Area.

52. The Court (ECF 592) has previously determined that Intervenorors have standing as voters to challenge the redistricting of CD 9, 18, and 30, and as incumbent legislators or legislative candidates for racial gerrymandering and intentional vote dilution. The Court further noted that in their capacities as legislators or legislative candidates such claims could be brought on behalf of both Black and Latino voters. Accordingly, Intervenorors confine their claims to the foregoing restrictions.

53. In support of Intervenor's Second Amended Complaint, Dr. Richard Murray provided analysis of CD's 9 and 18.

#### **Discriminatory Effect of the New CD 18**

54. Dr. Murray's Supplemental Report expressly states that minority voters in CD 18 were more heavily burdened than non-minority voters. *See* Exhibit D. Dr. Murray bases this conclusion on several facts. First, he notes that the Black VAP in CD 18 was reduced from 38.8% in the Benchmark Plan to 34.4% in the Enacted Plan. This necessarily burdens Black voters in a minority opportunity district. *Prelim. Inj. Op.*, 2022 WL 1410729, at \*12. Second, Dr. Murray performed an analysis of the precincts that were removed from the District versus those that were added and notes that the nine southernmost precincts removed (0031, 0156, 0180, 0236, 0237, 0238, 0573, 0822, 0858) were majority black precincts while the five added precincts (0108, 0363, 0888, 0960, 0968) were racially mixed. The added precincts also included high growth areas and raw land with unpredictable future growth. This has the possibility of further undermining the nature of the District as an opportunity district and to undermine Black voters ability to elect their candidate of

Case 3:21-cv-00259-DCG-JES-JVB Document 619 Filed 10/19/22 Page 21 of 62  
choice. Murray indicates that the changes are such that they jeopardize the future African-American opportunity district status of each and dilutes their African-American voting strength as well. Murray previously concluded that the changes to the 9th and 18th were so drastic and unnecessary that they must be the result of intentional discrimination.

55. Dr. Murray's Supplemental Report neatly complements the key findings of Dr. Henderson's Supplemental Report included herein as Exhibit F. Dr. Henderson found that, using a multilinear regression analysis, race was a significant predictor of the outcomes in the Enacted map whereas political party "seemingly has no relationship" to the changes from the Benchmark map to the Enacted Map. *See* Exhibit F, 4. Essentially, what Dr. Henderson finds on the regional level is borne out by Dr. Murray's findings on the district level.

#### **Discriminatory Effect of the New CD 9**

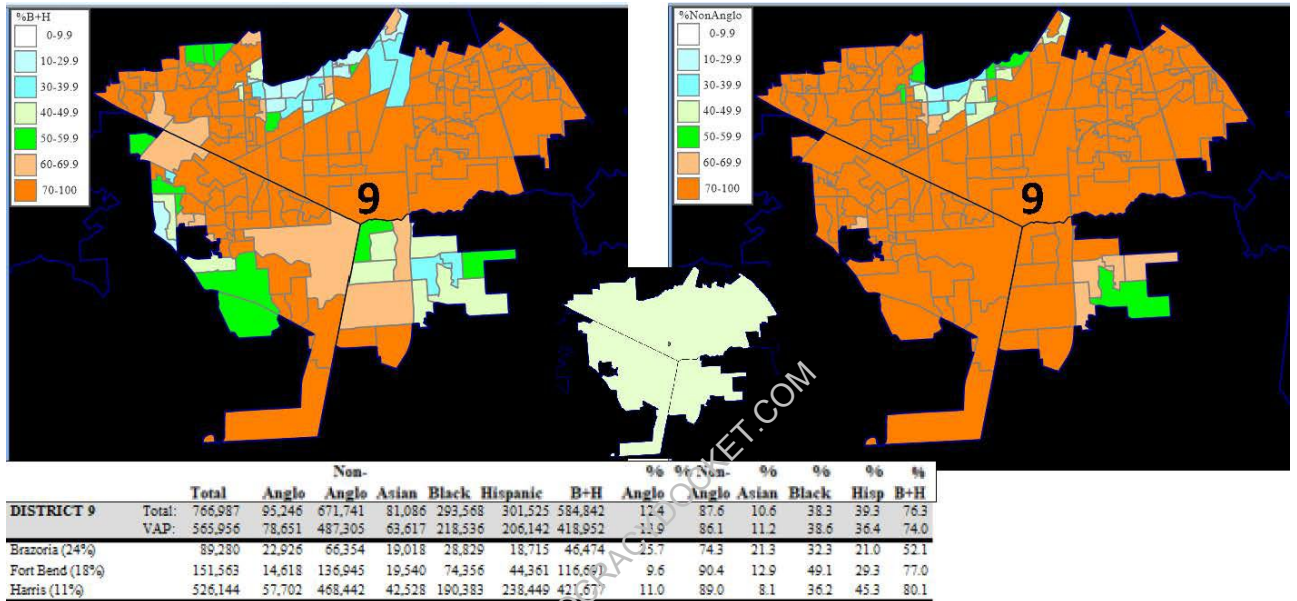
56. The same is true of CD 9. While on its face CD 9 actually increased its Black VAP, (largely by inclusion of the heavily Black precincts removed from CD 18), Dr. Murray determines that these changes are likely to be ephemeral and that the Black VAP is likely to be reduced over the coming decade. *See* Exhibit F, 3-5. This is because of the inclusion of fast-growing diverse precincts around the City of Pearland where the Black population maintains a thin plurality of a third of the population. These thirteen fast growing precincts are likely to quickly outgrow the nine average growing precincts received from CD 18. Thus, the facial increase in BVAP is actually a Trojan Horse that represents a heavier burden on Black voters. *Prelim. Inj. Op.*, 2022 WL 1410729, at \*12. This is particularly so when coupled with the aforementioned statistical data from Dr. Henderson.

#### **Racial Gerrymandering**

57. The Court, in its Memorandum Opinion decried a lack of evidence racial gerrymandering in Intervenor's First Amended Complaint. *See generally* ECF 592. Specifically, the Court referenced a lack of maps, allegations of bizarre shapes, and compactness scores. Intervenor's

58. Intervenor note that the First Amended Complaint included Exhibit C which is a map C2131 od CD 9 and 18. Exhibit C is again attached herein but Intervenor further include the following:

### CD 9



59.

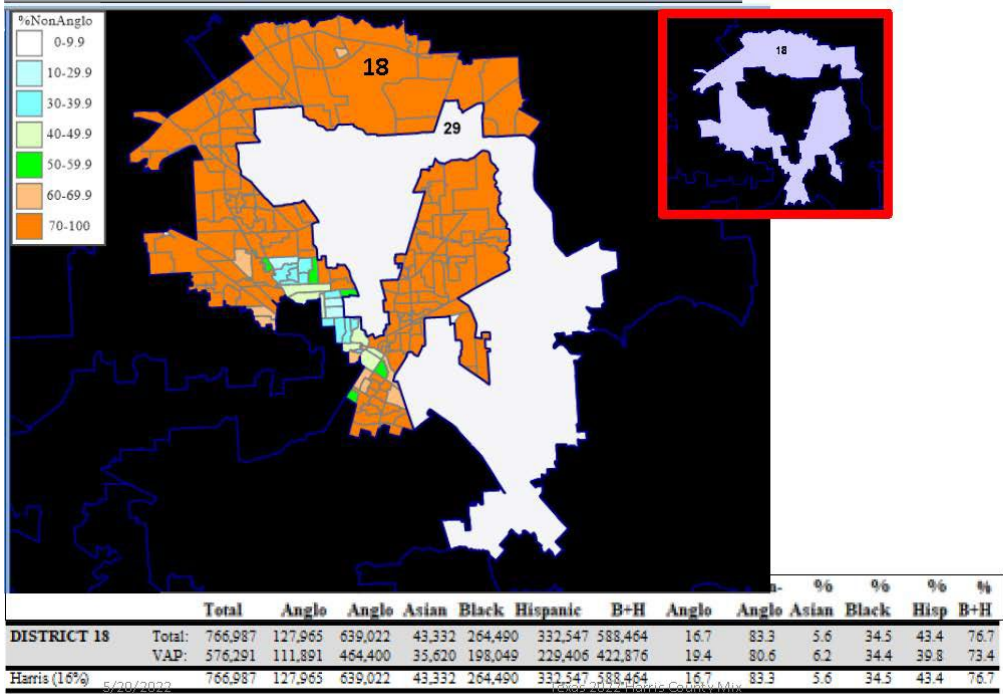
5/20/2022

Texas 2022 Harris County Mix

16

### CD 18





60.

CD 30



61.

62. A visual perusal of these images indicates their bizarreness to lesser and greater degrees. CD 9 looks like an ailing chicken with a leg that grotesquely reaches backward. CD 18 resembles nothing so much as an awkward blob with a uterus shaped hole cut out of its center. And finally, CD 30 closely resembles an amoeba with tentacles that reach out in every direction, presumably to collect as many black voters as possible. Bizarre shapes are a hallmark of racial discrimination in redistricting, and at least as far as CD 9, 18, and 30 are concerned is clearly apparent.

63. Respecting compactness analysis, the Texas Legislative Council is reasonably helpful.

Providing a compactness analysis attached to the Complaint as Exhibit F we can see that CD 9 has an Area Rubber Band score of .685, CD 18 has a score of 0.539, and CD 30 has a score of .750. As measured by this scale, the closer a number is to 1, the more compact it is. Neither CD 9 nor CD 18 measure particularly close to 1. It should be noted that the uteran-shaped carve-out in CD 18 lends towards a more compact score than it perhaps deserves. The districts in question are bizarre and not particularly compact.

64. Intervenors aver that such bizarre shapes are evidence of racial bias as little else explains them. And while CD 18 and CD 30 are not egregiously non-compact, all three are non-compact enough to give rise to the inference that race predominated over traditional redistricting concerns. All of the foregoing must also be filtered through the lens of Dr. Henderson's statistical work demonstrating that race explains the boundary lines and that political parties showed no statistical impact. Stated otherwise, Dr. Henderson has statistically proven that race predominated in the redistricting process.

65. Intervenors allege that the way the voters were moved around into or out of the 9<sup>th</sup>, 18<sup>th</sup> and 30<sup>th</sup> Congressional Districts evidences racial gerrymandering. See Statement of George Korbel that is attached hereto as Exhibit G.

66. Intervenors further allege that the massive movement of Black voters in and out of the 9<sup>th</sup> and 18<sup>th</sup> and 30<sup>th</sup> Congressional Districts evidence racial gerrymandering. *See* Exhibit E, Expert Report of Dr. Howard Henderson and Jack Sevil. The standard deviation for the movement of African-American voters in the new Congressional map from what would be expected for Black voters for Congressional District 30 and neighboring districts is 52.68. The standard deviation for the movement of African-American voters in the new Congressional map from what would be expected for Black voters for Congressional Districts 9 and 18 and their neighboring districts is 46.71. These excessive standard deviations evidence racial gerrymandering.

67. Intervenors also aver that race was the primary motivating factor in the drawing of the new



## **CAUSES OF ACTION**

### **Count I**

68. The allegations contained in paragraphs 1-67 are alleged as if fully set forth herein.

69. The 2021 redistricting plans adopted by the Texas Legislature were developed with the intent to disadvantage African-American and other minority voters including those in the 9<sup>th</sup>, 18<sup>th</sup> and 30<sup>th</sup> Congressional Districts. That intentional discrimination is in violation of the Equal Protection Clause of the Fourteenth Amendment of the United States Constitution, the Fifteenth Amendment of the United States Constitution, and 42 U.S.C. § 1983.

### **Count II**

70. The allegations contained in paragraphs 1-67 are alleged as if fully set forth herein.

71. The 2021 redistricting plans adopted by the Texas Legislature were developed in such a way and with the intent to not provide any new opportunity districts to minority voters and to ensure that districts dominated by or electing white representatives would continue to elect the candidate of choice of white voters. Further, the plan was drawn to maximize the voting power of white voters in the Harris County-Fort Bend County and Surrounding Area, and the Dallas-Fort Worth Metroplex to disadvantage African-American and other minority voters including those in the 9<sup>th</sup>, 18<sup>th</sup> and 30<sup>th</sup> Congressional Districts. This redistricting plan contains clear elements of drafting which show the Legislature was undeniably motivated by unconstitutional desires to minimize and exclude the political voice of voters of color in the state and in the 9<sup>th</sup>, 18<sup>th</sup> and 30<sup>th</sup> Congressional Districts. This intentional discrimination is in violation of the Equal Protection Clause of the Fourteenth Amendment of the United States

Constitution, the Fifteenth Amendment of the United States Constitution, and 42 U.S.C. § 1983. The 9<sup>th</sup>, 18<sup>th</sup> and 30<sup>th</sup> were drawn as part of a racial vote dilution or racially scheme that was designed and intended to prefer and empower white voters above minority voters.

### **Count III**

72. The allegations contained in paragraphs 1-67 are alleged as if fully set forth herein.

73. The 2021 Congressional redistricting plan adopted by the Texas Legislature is so rife with an intent to discriminate against minority voters including those in the 9<sup>th</sup>, 18<sup>th</sup> and 30<sup>th</sup> Congressional Districts that Plaintiffs and all minority voters in Texas or those in the 9<sup>th</sup>, 18<sup>th</sup> and 30<sup>th</sup> Congressional Districts are entitled to equitable relief under Section 3(c) of the Voting Rights Act, 42 U.S.C. § 1973.

### **Count IV**

74. The allegations contained in paragraphs 1-67 are alleged as if fully set forth herein.

75. Race was the predominant factor in the drawing of the Congressional Districts both in the Dallas/Fort Worth Metroplex and the Harris County/Fort Bend Area. In the Dallas/Fort Worth Metroplex Area, the Congressional Districts impacted were white voter dominated Congressional Districts 6, 12, 24 and 25 whose drawing caused the encompassing of minority voter dominated Congressional Districts 30, 32 and 33. In the Houston/Fort Bend County Area, the Congressional Districts impacted were conservative white voter dominated Congressional Districts 2, 14, 18 and 22, white voter controlled Congressional District 7 and minority voter controlled districts 9, 18 and 29 which were impacted by the racial gerrymander to enhance Congressional Districts 2, 7, 14, 18 and 22.

76. Racial considerations were the legislature's dominant motivation of the legislature in adopting the Dallas/Fort Worth Metroplex Area Districts and the Harris County/Fort Bend

County Area Districts. Latinos were responsible for approximately 52 percent of the State's growth and were responsible for 65 percent of the State's growth according to the 2010 Census but the Legislature chose to engage in this racial gerrymander to ensure that Latino voters would not be drawn to a seat which they could control. That goes against population figures that show Latino growth was so substantial in each of these areas that such seats were naturally occurring and could have easily been drawn by the Legislature. Minority opportunity districts which were close to the optimum size became the subject of cracking and dispersion in order to further this aim. Latino voters and those who might align with them were placed in other districts when they could and should have been included in either a new Latino opportunity district in Harris/Fort Bend and also Dallas/Fort Worth Metroplex. Minority voters were joined to the 30<sup>th</sup>, 32<sup>nd</sup> and 33<sup>rd</sup> that could have been used to create a new Latino opportunity district, and minority voters were moved from Congressional District 6 and 5 into Congressional Districts 30 and 32 in order to ensure continued white voter control of those districts.

77. Traditional redistricting principles were thereby ignored and major surgery took place in the 9<sup>th</sup>, 18<sup>th</sup> and 30<sup>th</sup> Congressional Districts. White voters of both parties were given stronger districts and each a new district. Some of the districts were irregular in shape. The Senate delegation on the Conference Committee on C2193 had no African-Americans or Latinos and the House Conference Committee had no Latinos. The Legislature adopted this map with a discriminatory intent and bad faith towards the African-American and/or Latino communities including those in the benchmark plan in Congressional Districts 9, 18 and 30 and as to those voters in the new map who are now included in Congressional Districts 9, 18 and 30.

78. Because racial considerations predominated in the map drawing, Defendants' justifications for the maps are subject to strict scrutiny.

79. By engaging in the acts and omissions alleged herein, Defendant acted and continue to act under color of law to deny the Plaintiff rights guaranteed to them by the Fourteenth and Fifteenth Amendments to the U.S. Constitution and will continue to violate those rights absent relief granted by this Court.

#### **BASIS FOR EQUITABLE RELIEF**

80. Plaintiff-Intervenors have no plain, adequate or complete remedy at law to redress the wrongs alleged herein and this suit for declaratory judgment and injunctive relief is their only means of securing adequate redress from all of the Defendants' unlawful practices.

81. Plaintiff-Intervenors will continue to suffer irreparable injury from all of the Defendants' intentional acts, policies, and practices set forth herein unless enjoined by this Court.

#### **ATTORNEYS' FEES**

82. In accordance with 42 U.S.C. Section 1973-1(e) and 1988, Plaintiffs are entitled to recover reasonable attorney's fees, expenses and costs.

#### **PRAYER**

Plaintiff-Intervenors respectfully pray that this Court enter Judgment granting:

A. A declaratory judgment that State Defendants' actions violate the rights of Plaintiffs as protected by Section 2 of the Voting Rights Act, 42 U.S.C. § 1973 et seq., and the Fourteenth Amendment to the United States Constitution, 42 U.S.C. § 1983; and

B. Preliminary and permanent injunctive relief requiring State Defendants, their successors in office, agents, employees, attorneys, and those persons acting in concert with them and/or at their discretion – to develop redistricting plans that do not dilute African American and minority voting strength or racially gerrymander in the 9<sup>th</sup>, 18<sup>th</sup> and 30<sup>th</sup> Congressional Districts nor in the Harris-Fort Bend Area of the Dallas-Fort Worth Metroplex Area for the Texas United

States House of Representatives, and enjoining and forbidding the use of the newly-enacted congressional plan after trial on the merits; and

C. An order requiring the State of Texas to submit to this Court for preclearance, under Section 3(c) of the Voting Rights Act, any change to any voting practice or procedure, including but not limited to any new redistricting plan, for a period not less than 10 years; and

D. If need be, adopt an interim electoral plan for the 2024 elections for United States Congress and Texas House of Representatives that remedy these statutory and constitutional flaws; and

E. An order of this Court retaining jurisdiction over this matter until all Defendants have complied with all orders and mandates of this Court; and

F. An order requiring Defendants to pay all costs including reasonable attorneys' fees, and

G. Such other and further relief as the Court may deem just and proper.

Dated: October 19, 2022.

Respectfully Submitted,

/s/ Gary Bledsoe

The Bledsoe Law Firm PLLC

State Bar No. 02476500

6633 Highway 290 East #208

Austin, Texas 78723-1157

Telephone: 512-322-9992

Fax: 512-322-0840

[gbledsoe@thebledsoelawfirm.com](mailto:gbledsoe@thebledsoelawfirm.com)

[Garybledsoe@sbcglobal.net](mailto:Garybledsoe@sbcglobal.net)

Attorney for Plaintiff-Intervenors Eddie Bernice  
Johnson, Sheila Jackson-Lee, Alexander Green  
and Jasmine Crockett

**UNITED STATES DISTRICT COURT  
FOR THE WESTERN DISTRICT OF TEXAS  
EL PASO DIVISION**

LULAC, et. al.,	)(	
	)(	
<i>Plaintiffs</i>	)(	
	)(	
Eddie Bernice Johnson, Sheila Jackson-Lee	)(	
Alexander Green, and Jasmine	)(	
Crockett	)(	
	)(	
<i>Plaintiff-Intervenors</i>	))	
	)(	
v.	)(	Case No.: EP-21-CV-00259-DCG-
	)(	JES-JVB [Lead Case]
GREG ABBOTT, in his official capacity	)(	
As Governor of Texas, et. al.	)(	
	)(	
<i>Defendants</i>	)(	

**EXHIBITS TO THE FIRST AMENDED COMPLAINT OF PLAINTIFF-  
INTERVENORS EDDIE BERNICE JOHNSON, SHEILA JACKSON-LEE,  
ALEXANDER GREEN, AND JASMINE CROCKETT**

Exhibit	Exhibit Name
A	Letter From Congresswoman Eddie Bernice Johnson to Rep. Todd Hunter.
B	Joint letter from Congresspersons Jackson-Lee and Green to Legislators which is incorporated herein as if fully set forth.
C	Proposed Map C2131 Proposed by Senator Miles and Representative Thompson.
D	Supplemental Report of Dr. Richard Murray
E	Supplemental Report of Dr. Howard Henderson
F	TLC Compactness Analysis
G	Statement of George Korbel

Respectfully Submitted,

/s/ Gary Bledsoe

The Bledsoe Law Firm PLLC  
State Bar No. 02476500  
6633 Highway 290 East #208  
Austin, Texas 78723-1157  
Telephone: 512-322-9992  
Fax: 512-322-0840

gbledsoe@thebledsoelawfirm.com

Attorneys for Plaintiff-Intervenors Eddie Bernice  
Johnson, Sheila Jackson-Lee, Alexander Green and  
Jasmine Crockett

Nickolas A. Spencer, J.D., M.A.

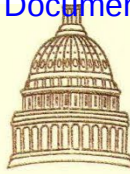
Spencer & Associates, PLLC  
State Bar No. 24102529  
9100 Southwest Freeway, Suite 122  
Houston, Texas 77074  
Telephone: 713-863-1409  
Fax: 713-863-1409

nas@naslegal.com

## EXHIBIT A

RETRIEVED FROM DEMOCRACYDOCKET.COM





*Eddie Bernice Johnson*  
*Member of Congress*  
*Thirtieth District, Texas*

October 13, 2021

The Honorable Todd Hunter  
Chairman, House Committee on Redistricting  
Texas House of Representatives  
P.O. Box 2910  
Austin, TX 78768

Re: Texas 30<sup>th</sup> Congressional District

Dear Honorable Hunter:

I am a member of the United States Congress, representing Texas' 30<sup>th</sup> Congressional District. My district is about 16,000 above the mean number for Congressional Districts in Texas. I want to keep it largely intact. There is no reason to change the district under current circumstances, and any change should be one that comes from those with understanding of the constituents and the needs that must be met and that includes me as the Congressperson for the 30<sup>th</sup> Congressional District. Last time my district was drawn without my input, and it was cracked and packed in such a way to where courts in Texas and the District of Columbia comprised mostly of Republicans said it was illegal vote dilution.

Please include me in making any decisions about the 30<sup>th</sup> Congressional District. The courts have continually recognized it as a protected African-American opportunity seat and I would like to keep it that way.

I helped establish CD30 from its infancy and though it has been reconfigured many times in the past, in many different lines, I have worked to nourish and develop it through the years, making me uniquely qualified to understand it.

It goes without saying that I know the communities of interest, local political system, the district's economic engines, racial and ethnic groups, diverse businesses, and how they all fit together in ways to uniquely advance the interests of the 30<sup>th</sup> Congressional District. It is my intention to provide you with a map in the not too distant future, though I would appreciate you letting me know of any existing time obligations to provide my recommendations to you.



I know incumbent protection and maintaining cores of districts together are two accepted redistricting principles in Texas and hoping they are applied to my district consistent with the requirements of the Voting Rights Act.

Thank you.

Sincerely,

A handwritten signature in blue ink that reads "Eddie Bernice Johnson". The signature is fluid and cursive, with the first name "Eddie" being more prominent.

Eddie Bernice Johnson  
Member of Congress

RETRIEVED FROM DEMOCRACYDOCKET.COM

## EXHIBIT B

RETRIEVED FROM DEMOCRACYDOCKET.COM

September 29, 2021

The Honorable Joan Huffman  
Chair  
Senate Special Committee on Redistricting  
P.O. Box 12068  
Capitol Station  
Austin, Texas 78711

The Honorable Todd Hunter  
Chairman  
House Committee on Redistricting  
Texas House of Representatives  
P.O. Box 2910  
Austin, Texas 78768

RE: Texas 9<sup>th</sup> and 18<sup>th</sup> Congressional Districts

Honorable Joan Huffman and Honorable Todd Hunter:

As long-serving members of Congress from the 9<sup>th</sup> and 18<sup>th</sup> Districts of Texas, we strongly object to the initial congressional map (C2101) released by the Texas Senate Committee on Redistricting on September 27, 2021.

We base our objection on the following facts:

- Both districts in their present configuration have afforded African American voters the opportunity to elect candidates of their choice for 50 years in the case of the 18<sup>th</sup> District and 30 years for the 9<sup>th</sup> District (being an African-American opportunity district for nearly twenty years).
- Both districts have more than sufficient populations to maintain existing boundaries. The 9<sup>th</sup> District is slightly over the 2020 mean (+3,811) for Texas and the 18<sup>th</sup> District is less than three percent (+29,921) over the average. Very minor adjustments can bring each to the required 766,987 population.
- That being the case, the proposed Senate map unnecessarily removes more than 200,000 residents from these districts, while adding a slightly smaller number of new constituents with no history of being included in a protected district under the 1965 Voting Rights Act as amended in 1975.
- Both existing districts have strong economic engines providing expanding job opportunities for local residents. Notable among these are the Downtown Business District (DBD) and Bush International Airport in the 18<sup>th</sup> District and the Texas Medical Center in the 9<sup>th</sup> District.
- The proposed map moves the aforementioned Downtown Business District from the 18<sup>th</sup> District to an adjacent proposed district with fewer than 12 percent Black residents. Other important assets in the 18<sup>th</sup> District, such as the campuses of Texas Southern University and the University of Houston, are moved by C2101.
- The proposed map radically alters the local congressional map by moving the historic Third Ward and MacGregor areas from the 18<sup>th</sup> District to the 9<sup>th</sup>. That shift that includes the residence and main district offices of Congresswoman Sheila Jackson Lee. No other member of the large Texas delegation is so severely impacted by the proposed map.

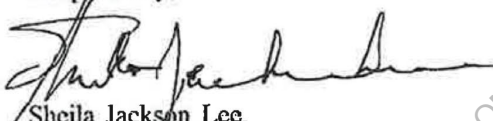
- We also note that for the first time since Barbara Jordan took the 18<sup>th</sup> District seat in January, 1973, the iconic Fifth Ward and Third Ward constituencies have been placed in separate districts with no input from these communities.
- The changes to the Ninth District remove some of the most diverse and fastest growing communities in Fort Bend County, communities with a proven record of supporting the candidates of choice of Black voters. The proposed plan would add a number of new precincts from the City of Pearland in Brazoria County – a community with a history of opposing candidates supported by Black voters.

Currently, Congressional District 9 is almost the optimum size, being a little under 5,000 above the target number. Congressional District 18 is presently slightly above the optimum number for Congressional Districts by a little over 30,000. Last decade, after the State declined to include us in the process, Courts overturned the drawing of both districts as they both were victims of unnecessary surgery. It is essential that we keep the core of our districts together, including its economic engines and communities of interest.

In sum, the C2101 map makes radical and unneeded changes to the two local congressional districts that include the majority of Black voters in Harris and Fort Bend Counties. These changes have been made with no input from the sitting members, nor their constituent populations.

We should note that the 3 Judge Panel that heard the Section 5 challenge to the proposed Congressional Plan adopted by the Texas Legislature in 2011 made it very clear that the 9<sup>th</sup> and 18<sup>th</sup> are both protected African-American opportunity seats, and that they are protected from unnecessary surgery and surgery that takes out important economic engines from these districts as is being done in the current proposed plan. The paring of the two occupants of these districts seems and the unnecessary surgery done on their districts is clearly an act of racial discrimination. We strongly urge the Texas Senate members to reconsider C2101 and restore the performing 9<sup>th</sup> and 18<sup>th</sup> districts that have well served voters of color for decades.

Respectfully,

  
Sheila Jackson Lee,  
Member of Congress  
Texas 18<sup>th</sup> Congressional District

Respectfully,

  
Alexander Green,  
Member of Congress  
Texas 9<sup>th</sup> Congressional District

Cc: Senator Royce West, Member, Senate Committee on Redistricting  
Senator Borris Miles, Member, Texas Legislative Black Caucus  
Vice-Chairwoman Toni Rose, Texas House Redistricting Committee  
Representative Nicole Collier, Chair, Texas Legislative Black Caucus  
Representative Ron Reynolds, 1<sup>st</sup> Vice Chair, Texas Legislative Black Caucus  
Representative Rafael Anchia, Member, Texas House Redistricting Committee  
Representative Craig Goldman, Member, Texas House Redistricting Committee  
Representative Ryan Guillen, Member, Texas House Redistricting Committee  
Representative Jacey Jetton, Member, Texas House Redistricting Committee



Representative Brooks Landgraf, Member, Texas House Redistricting Committee  
Representative Ina Minjarez, Member, Texas House Redistricting Committee  
Representative Joe Moody, Member, Texas House Redistricting Committee  
Representative Geanie Morrison, Member, Texas House Redistricting Committee  
Representative Andrew Murr, Member, Texas House Redistricting Committee  
Representative Mike Schofield, Member, Texas House Redistricting Committee  
Representative Senfornia Thompson, Member, Texas House Redistricting Committee  
Representative Chris Turner, Member, Texas House Redistricting Committee  
Representative James White, Member, Texas House Redistricting Committee  
Colleen Garcia, Committee Clerk, Texas House Redistricting Committee  
Senator Royce West, Member, Senate Special Committee on Redistricting  
Mr. Marc Hoskins, Executive Director, Texas Legislative Black Caucus  
Vice-Chair Juan Hinojosa, Senate Special Committee on Redistricting  
Senator Carol Alvarado, Member, Senate Special Committee on Redistricting  
Senator Paul Bettencourt, Member, Senate Special Committee on Redistricting  
Senator Brian Birdwell, Member, Senate Special Committee on Redistricting  
Senator Donna Campbell, Member, Senate Special Committee on Redistricting  
Senator Kelly Hancock, Member, Senate Special Committee on Redistricting  
Senator Bryan Hughes, Member, Senate Special Committee on Redistricting  
Senator Eddie Lucio, Jr., Member, Senate Special Committee on Redistricting  
Senator Robert Nichols, Member, Senate Special Committee on Redistricting  
Senator Angela Paxton, Member, Senate Special Committee on Redistricting  
Senator Charles Perry, Member, Senate Special Committee on Redistricting  
Senator Royce West, Member, Senate Special Committee on Redistricting  
Senator John Whitmire, Member, Senate Special Committee on Redistricting  
Senator Judith Zaffirini, Member, Senate Special Committee on Redistricting

RETRIEVED FROM DEMOCRACYDOCKET.COM

## EXHIBIT C

RETRIEVED FROM DEMOCRACYDOCKET.COM

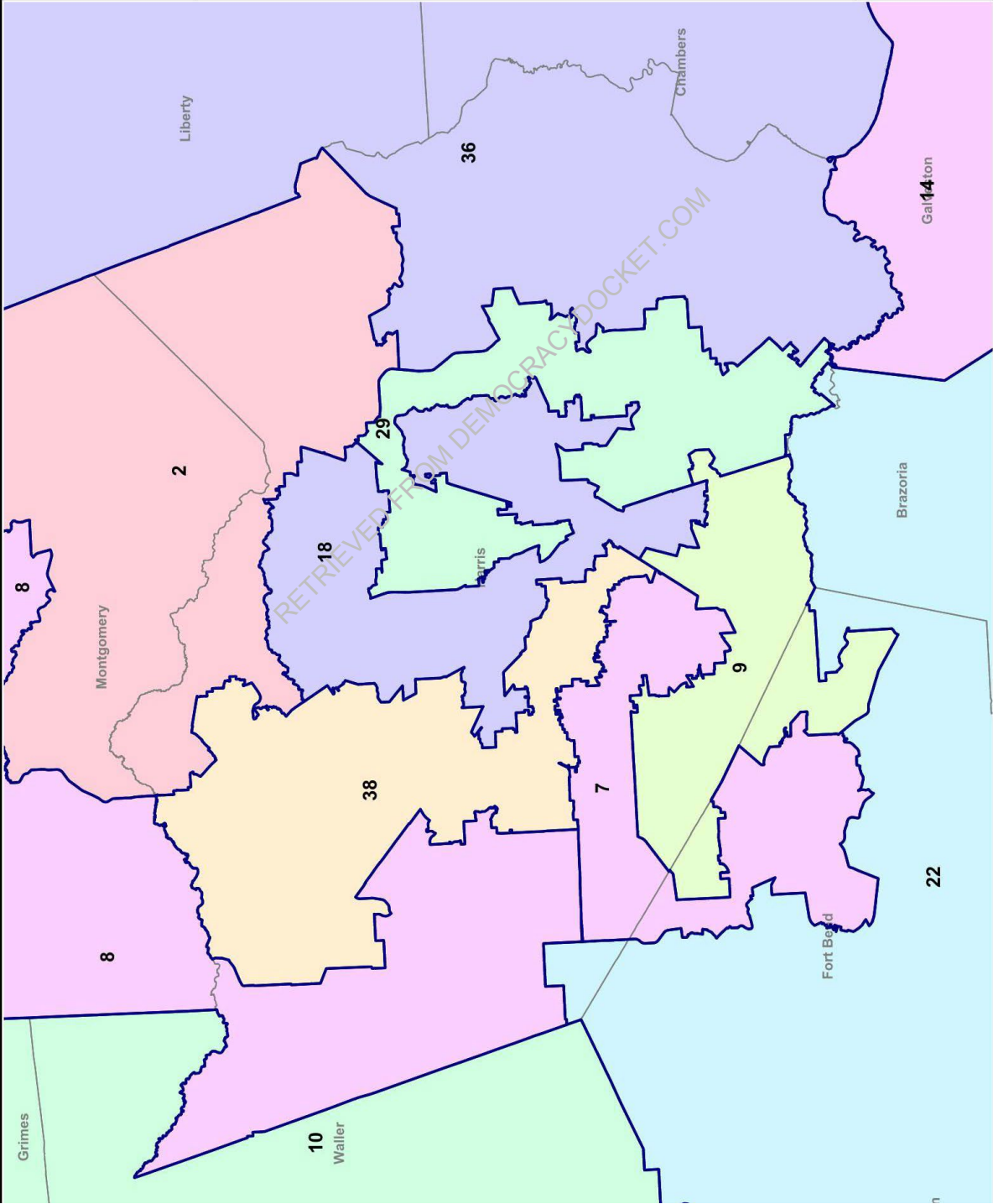
**Harris County**  
**U.S. Congressional Districts**  
SEN. MILES STATEWIDE AMEND PLANC2116 (CSSB6)  
**PLANC2131**

County  
District

RedAppl: 5000  
10/7/2021 3:38:26 PM



2020 Census  
PLANC2131 10/7/2021 9:00:18 AM



## EXHIBIT D

RETRIEVED FROM DEMOCRACYDOCKET.COM



## **Amended Expert Report: The Enacted Texas Congressional Redistricting Plan**

RETRIEVED FROM DEMOCRACYDOCKET.COM

By Richard Murray  
Senior Research Associate  
Hobby School of Public Affairs  
University of Houston

October 18, 2022

---

### The 18<sup>th</sup> Congressional District

In an opinion filed on 09/28/2022, the three-judge federal panel in El Paso considering the 2021 congressional redistricting map enacted by the Texas legislature held that the plaintiff intervenors “have not adequately alleged intentional vote dilution claims as to Congressional Districts 9 and 18 as they have not shown that the changes bore more heavily on one race than others ...” More specifically, they noted “intervenors allegations regarding the Plan’s effect on Congressional District 18’s minority voters are far vaguer.” (p. 41)

To address that point, I performed an analysis of two sets of voting precincts moved by Plan C2193. These shifts were primarily responsible for reduction of the Black VAP in CD 18 from 38.8% to 34.4%. The first set are nine Harris County precincts in the southernmost part of CD 18 under the old map (0031, 0156, 0180, 0236, 0237, 0238, 0573, 0822, 0858). These precincts have been in the 18<sup>th</sup> CD since Black voters elected Barbara Jordan in 1972 and have successfully elected candidates of their choice for fifty years. The second set are precincts in northeast Harris County (0108, 0363, 0888, 0960, 0968), a high-growth area with large tracts of underdeveloped land. These precincts have never been in a Black opportunity district.

Table One shows the removed precincts were heavily Black (VAP of 66.9%) and extremely cohesive (93.4% for their preferred presidential candidate in 2020). In contrast, the added precincts in northeast Harris County were racially and ethnically very diverse, with Hispanic VAP (37.4%) higher than Black VAP (36.7%), and with a sizeable Anglo VAP (20.6%). The added precincts supported the same presidential candidate in 2020 as voters in the removed area, but at a far lower level (69.0%).

These changes, in my opinion, document that Black voters in the new 18<sup>th</sup> district were more heavily burdened by Plan C2193 than other racial/ethnic voter groups. Anglo voter VAP increased from 16.2% to 19.4%, mostly because of the northeast county precincts included in Table One. And, it should be noted the exurban white voters added by this map are far more racially polarized against candidate preferred by Black voters than inner-city Anglos removed by the enacted map. In that regard, note that precinct 0808, a majority Anglo (52.2%) box in midtown Houston supported the same 2020 presidential candidate as did Black voters by a margin of 393 (Biden) to 99 (Trump). Compare with precinct 0098 in northeast Harris County, which had an Anglo VAP of 75.6% in 2020, and supported Trump over Biden by a margin of 1942 votes to 456 votes, according to the HarrisVotes website archive.

I further note that both Hispanic (39.0%) and Asian (6.2%) VAP percentages in CD were increased by C2193, as Black VAP declined to 34.4%. The enacted map also added sizeable developable land that, over ten years, will likely further reduce the Black population percentage in CD 18, thus steadily eroding the ability of African American voters to elect candidates of their choice.

**Table One: The Racial/Ethnic Makeup and 2020 Presidential Vote Pattern of the Precincts Moved out and into the 18<sup>th</sup> CD by Plan 2193**

Precincts Removed

	Race/Ethnicity of VAP in 2020					2020 Two-Party Presidential Vote	
	Anglo	Hispanic	Black	Asian	Other	Trump	Biden
0031	85	392	2772	35	15	73	1293
0156	288	676	2925	106	30	116	1923
0180	113	951	2445	25	22	106	1367
0236	29	1377	1206	8	6	82	920
0237	31	768	1534	7	8	56	1020
0238	25	1023	1170	9	20	65	875
0573	37	394	1594	31	9	31	806
0822	20	770	1097	22	2	6	772
0858	12	106	309	2	3	9	195
TOTAL	640	6,462	15,062	245	115	644	9,171
	2.8%	28.7%	66.9%	1.1%	0.5%	6.6%	93.4%

Precincts Added

0108	1728	2905	2032	234	232	1012	1151
0363	2230	3550	3265	184	145	1168	2427
0888	570	1329	1164	123	59	493	1157
0960	343	673	1382	155	18	269	1097
0968	425	1168	1599	163	56	338	1477
TOTAL	5,306	9,625	9,444	857	510	3,280	7,309
	20.6%	37.4%	36.7%	3.3%	2.0%	31.0%	69.0%

Sources: VAP precinct data are from the Red.110T report released by the Texas Legislative Council for Plan2100 on 08/02/2021. Presidential vote data are from the website HarrisVotes Archives.

The 9<sup>th</sup> Congressional District

The 9<sup>th</sup> District changes under Plan C2193 are different from the 18<sup>th</sup> CD in an important regard: The heavily Black precincts removed from the Jackson-Lee district were moved into Congressman Al Green's redrawn district, which resulted in slight overall increase in Black VAP in the district in contrast to the decline in 18<sup>th</sup> CD.

That said, the overall impact of the major changes made by C2193 resulted in a serious threat to the viability of the Ninth District to remain a Black opportunity district over the coming decade. The source of the problem is the removal of a large, stable group of racially diverse precincts on the west side of the existing district, and their replacement with a large swath of new territory on the southeast side of the district in Brazoria County.

The 2020 census showed the 9<sup>th</sup> District had almost exactly the population required for the districts in Texas – 770,798 versus 766,987 – a deviation of less than 0.5 percent. Nevertheless, Plan C2193 moved more than 300,000 people in and out of District Nine. One of the largest changes was moving 13 voting precincts in northern Brazoria County from the 2<sup>nd</sup> District into the redrawn 9<sup>th</sup>. I focus on this new Brazoria territory.

The precincts are located in one of the most dynamic areas of metropolitan Houston, including a large part of the City of Pearland. The 2020 census data shows the area is very racially and ethnically diverse. Blacks were a plurality, but less than a third of the population, closely followed by Anglos, with sizeable Asian and Hispanic populations. Given the access to employment centers in Harris County such as the Texas Medical Center, this part of Brazoria County is almost certainly going to continue to grow at a much faster pace than the rest of the district, and that growth will most likely continue to be highly diverse, with Blacks remaining well below their percentage of the VAP elsewhere in the 9<sup>th</sup> District.

The addition of this fast-growing suburban area to the district will, in my opinion, hasten the transition of the Ninth Congressional District of Texas from a reliable opportunity district for Black voters, to a *coalition district* in which the candidate preferred by African American voters can still win, but only by joining with sufficient numbers of other minority populations in the racial polarized environment of Texas.

**Table Two: The Racial/Ethnic VAP Makeup and 2020 Presidential Vote of Brazoria County Precincts add to the Ninth CD of Texas**

Pcts	Racial/Ethnic VAP					2020 Pres Vote	
	Anglo	Hispanic	Black	Asian	Other	Trump	Biden
029	1081	662	939	1204	86	1056	1692
041	864	336	561	578	28	652	984
044	1743	630	1220	1225	63	1249	2010
050	1497	810	2697	1717	176	1073	2784
053	556	641	1465	424	57	500	1416
058	1269	458	1178	799	49	913	1558
059	1497	649	1497	1669	55	1206	2630
060	2306	1396	769	822	119	1681	1815
062	1876	1364	1647	474	153	1227	1865
063	787	1249	2167	448	61	702	2231
066	1089	715	1308	1717	35	978	2064
067	1069	818	2271	921	28	761	1952
068	1532	1828	2298	1142	164	1258	2611
TOTAL	17,168	11,556	20,017	13,130	1,074	13,256	25,612
	27.2	18.4	31.8	20.9	1.7	35.0	65.0

Sources: VAP data from Texas Legislative Council report released on 08/02/2021. Vote data from Brazoria County Election Archive website.

To sum up, C2193 provided a short term-boost to preserving CD Nine as a Black opportunity district by adding nine majority African American precincts from the 18<sup>th</sup> CD. But these precincts only included a VAP population of about 22,000 in 2020 and have had no growth over the last decade. By contrast, the newly added precincts in Brazoria County had a VAP of nearly 63,000 people in 2020 and a record of very fast growth (the 2010 VAP was 34,176).

The enacted map effectively dilutes the impact of Black voters in the coming decade by incorporating suburban growth areas where African Americans are a minority, and like to remain so, which more than cancels out the shift of inner-city precincts from the 18<sup>th</sup> District.

### Conclusion

In my opinion, C2193 harmed Black voters in Districts 9 and 18. Directly so, in CD 18 by removing a legacy part of the district with a proven record of strong support for candidates preferred by Black voters and replacing them with diverse suburban voters less supportive of such candidates. Indirectly, in District Nine by first adding the Black inner-city precincts from CD18 – a temporary boost to Black VAP. But, more than cancelling out than gain by adding a much more populous diverse suburban area in Brazoria County that will far outpace the additions from CD 18 in VAP growth and voter turnout.

RETRIEVED FROM DEMOCRACYDOCKET.COM

## EXHIBIT E

RETRIEVED FROM DEMOCRACYDOCKET.COM

**Confidential Report:**

**Supplement: Analysis of Texas Congressional Districts**

RETRIEVED FROM DEMOCRACYDOCKET.COM

**A report to Gary Bledsoe, J.D.**

**By Jack Sevil and Howard Henderson**

**June 13<sup>th</sup>, 2022**

Paired Samples *t*-tests were conducted to compare the means of 2020 Texas Congressional Districts and 2021 Texas Congressional Districts. Mean differences were derived from population-based percentages, including: 1) Total Voting Age Population Percent of Total Population; 2) Anglo Voting Age Population Percent of Total Voting Age Population; 3) Black Voting Age Population Percent of Total Voting Age Population; 4) Asian Voting Age Population Percent of Total Voting Age Population; and 5) Hispanic Voting Age Population Percent of Total Voting Age. Table 1 provides the degrees of freedom (*df*), Mean Difference, and probability (*p*) of these analyses, wherein three-significant findings were found:

1. Total Voting Age Population Percent of Total Population in 2021 was significantly lower than the Total Voting Age Population Percent of Total Population in 2020 by 8.07%.
2. Anglo Voting Age Population Percent of Total Voting Age Population in 2021 was significantly lower than the Anglo Voting Age Population Percent of Total Voting Age Population in 2020 by 2.11%.
3. Black Voting Age Population Percent of Total Voting Age Population in 2021 was significantly higher than Black Voting Age Population Percent of Total Voting Age Population in 2020 by 0.64%.

We are judging statistical significance by an alpha of .052 (just a hair over .05) as strong evidence against the null, there is less than a 5% probability that the difference in percentages between 2020 and 2021 occurred by chance. **There is a statistically significant difference in percent of voters (voting age between 2020 and 2021) that are anglo and black but there is no statistically significant difference in the change of percent of Asian or Hispanic voters.**

Significant meaning there is a 95% chance the measured mean difference between the 2021 and 2020 accurately describes the data analyzed. These findings demonstrate the changing voting age racial demographics within Texas Congressional Districts, and suggest the proportionality of Black persons was increasing while Anglo proportionality was decreasing. Moreover, the finding of 2021 Total Voting Age Population Percent of Total Population being significantly lower than 2020 Total Voting Age Population Percent of Total Population is an important finding. This finding suggests the proportion of Total Voting Age Population relative to Total Population from 2020 to 2021 within newly drawn Texas congressional Districts had decreased. That is, the proportion of the population which can vote within newly drawn Texas Congressional Districts has decreased overall, as had the Anglo population, but Black potential voters have increased. Additionally, changes were calculated for Asian and Hispanic Voting Age Population relative to Total Voting Age Population, but these changes were not significant. While the Hispanic population in Texas had increased in the 2020 Census data, the current *t*-tests utilize percentage-based statistics proportional to Total voting Age Population.



Table 1. T-Test Results Comparing 2021 and 2020 Mean Voting Age Populations (VAP) Percent by Texas Congressional Districts

Test	<i>df</i>	Mean Difference	<i>p</i>
Total VAP Percent of Total Population, 2020 compared to Total VAP Percent of Total Population, 2021	70	-8.07%	<.01*
Anglo VAP Percent of Total VAP, 2020 compared to Anglo VAP Percent of Total VAP, 2021	70	-2.11%	.03*
Black VAP Percent of Total VAP, 2020 compared to Black VAP Percent of Total VAP, 2021	70	.64%	.05*
Asian VAP Percent of Total VAP, 2020 compared to Asian VAP Percent of Total VAP, 2021	70	.98%	.1
Hispanic VAP Percent of Total VAP, 2020 compared to Hispanic VAP Percent of Total VAP, 2021	70	-.64%	.48

Note. \* indicates significant using Alpha = .05

Note. New District data was retrieved from Texas Legislature at <https://data.capitol.texas.gov/dataset/planc/>, which used the United States Census Bureau data released during August, 2021

Note. 2020 data was retrieved from: <https://redistrictingdatahub.org/dataset/texas-116th-congressional-district-vap-data-2020/>, which used the United States Census Bureau data released during August, 2021

Note. Political Party data was retrieved from: <https://www.brennancenter.org/our-work/analysis-opinion/anatomy-texas-gerrymander>

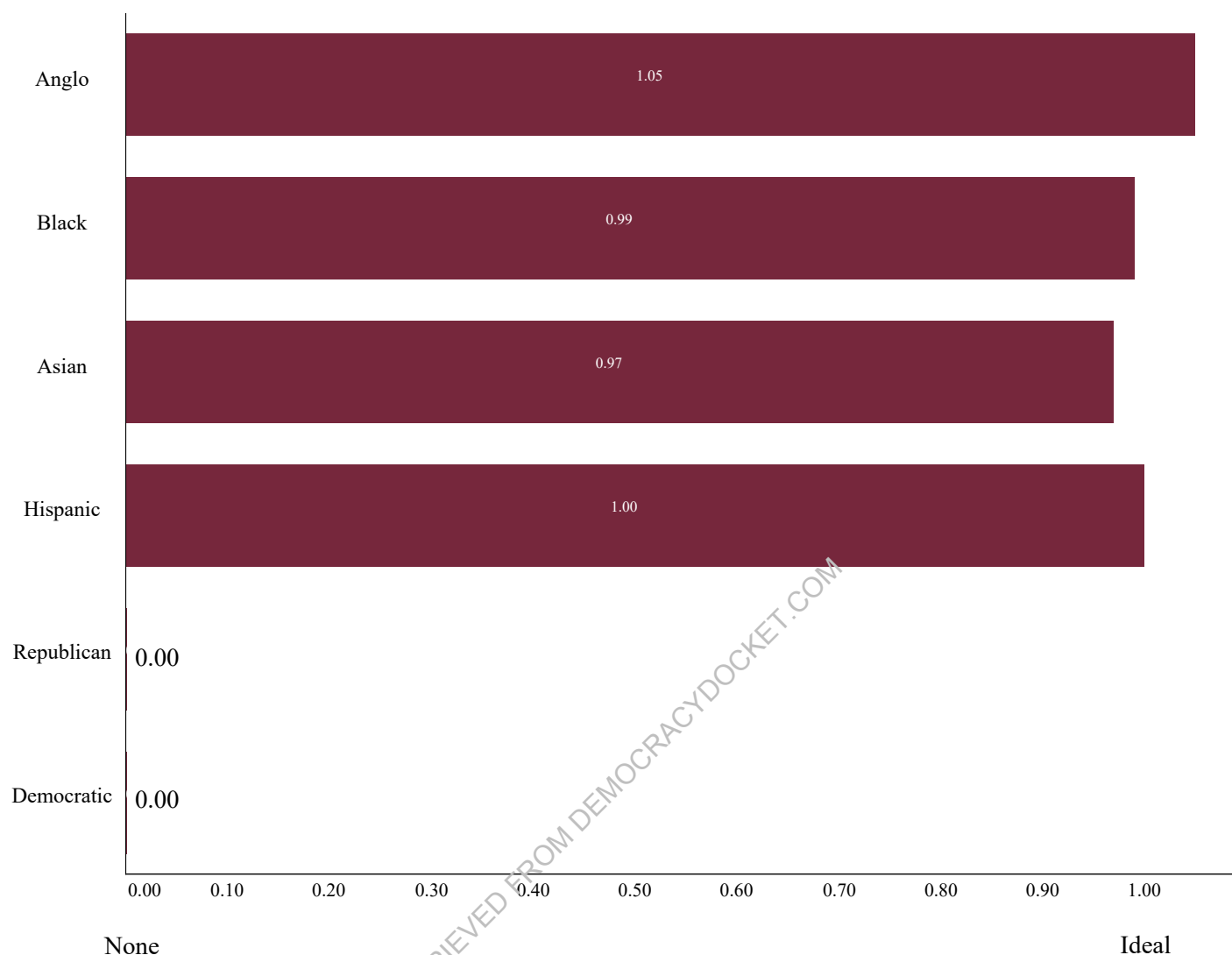
Additionally, two Multiple Linear Regression analyses were conducted to determine if *Race* or *Political Party* predict *Total Voting Age Population* within redrawn C-2193 Texas Congressional Districts. *Total Voting Age Population* and *Race/Ethnicity*-variables were measured as frequencies. Consistent with the Texas Legislature's characterizations, *Race* comprised four-categories: 1) *Anglo*; 2) *Black*; 3) *Asian*; and 4) *Hispanic*. Additionally, *Political Party* was measured with two-dichotomous variables. Specifically, two variables were created – labeled either *Republican* or *Democratic*, as determined by the political party of the congressional representative for 2020 – and prescribed values of 0-to-1. Within the *Republican* variable, a Texas Congressional District prescribed the value of 1 indicated Republican Political Party. Within the same variable, a Texas Congressional District prescribed the value 0 indicated Democratic Political Party. As such, within the Democratic variable, a value of 1 indicated a Texas Congressional District was Democratic, and 0 indicated Republican Political Party.

Using Multiple Linear Regression to calculate how multiple variables predict another is useful to predict linear relationships between phenomena while accounting for other relationships. That is, a Multiple Linear Regression is advantageous when compared to covariance or correlations calculations because neither can account for the influence of other variables within a model. The First Model within the current analysis includes Texas Congressional Districts from both the Dallas/Fort Worth Metroplex Area (5, 6, 12, 24, 25, 30, 32, and 33) and Houston/Fort Bend County Areas Texas Congressional Districts (2, 7, 9, 14, 18, 22, and 29). These Texas Congressional Districts were included within the First Model because they were the Texas Congressional Districts central to the current lawsuit. Calculated beta-coefficients ( $\beta$ ), Standard Error (*SE*), *df*, t-value (*t*), the critical

value of  $t$  ( $t$ -crit), probability  $p$ , and margin of error ( $ME$ ) for the First Model are indicated in Figure 1 and provided within Appendix A. **Herein each Race/Ethnicity was found to significantly predict change in Total VAP using an alpha ( $\alpha$ ) = .05. This means there is a 95% probability that observed relationships accurately describe the relationships between Total Voting Age Population, Race, and Political Party. Importantly, neither Political Party predicted any change ( $\beta$  = .00) in Total VAP. That is, of the Texas Congressional Districts analyzed within the First Model, being either Republican or Democratic seemingly has no relationship with changes in Total VAP.**

The lack of a relationship between Political Party and Total Voting age Population may evidence Texas Congressional Districts - central to the current case - have been racially gerrymandered. That is, each Race Voting Age Population predicts changes in Total Voting Age Population and does so with differing linearity. Specifically, Race relative to Total Voting Age Population should predict that as Total Voting Age Population increases by one-person so would Race Voting Age Population increase by one-person. Within the current study, perfect linearity of both Race Voting Age Population and Total Voting Age Population only occurs for Hispanic *Voting Age Population*. An increase in Anglo Voting Age Population predicts an increase in Total Voting Age Population by 1.05-persons, suggesting increases in Anglo Voting Age Population predicate decreases in other-Race *Voting Age Population*. That is - when Anglo Voting Age Population predicts inequivalent increases in Total *Voting Age Population* - the difference dictates a decrease in another population. Moreover, the Race Voting Age Population which appears to decrease is Black and Asian Voting Age Population. This is because increases in neither Black or Asian Voting Age Population predict equivalent increases in Total Voting Age Population. That is, Total Voting age Population does not increase proportionally to either Asian or Black Voting Age Population. Rather, Total Voting Age Population increases by less-than one-person per-Asian or Black person. For ease of interpretation, Figure 1 provides a visual representation of the First Model Multiple Linear Regression output.

Figure 1. Relationship between Race/Ethnicity, Political Party, and Voting Age Population in Districts of Concern



*Note.* New District data was retrieved from: <https://data.capitol.texas.gov/dataset/planc/>, which used the United States Census Bureau data released during August, 2021

*Note.* 2020 data was retrieved from: <https://redistrictingdatahub.org/dataset/texas-116th-congressional-district-vap-data-2020/>, which used the United States Census Bureau data released during August, 2021

*Note.* Political Party data was retrieved from: <https://www.brennancenter.org/our-work/analysis-opinion/anatomy-texas-gerrymander>

The Second Model analyzed Texas Congressional Districts outside the Dallas/Fort Worth Metroplex and Houston/Fort Bend County Areas not central to the current lawsuit: 1; 3; 4; 8; 10; 11; 13; 15; 16; 17; 19; 20; 21; 23; 26; 27; 28; 31; 34; 35; and 36. Political Party for Texas Congressional Districts 37 and 38 were added in 2021 therefore we are unable to identify a comparable baseline for them. As such, these two Congressional Districts were removed from the analysis. Calculations  $\beta$ ,  $SE$ ,  $df$ ,  $t$ ,  $t$ -crit,  $p$ , and  $ME$  for the Second Model are provided within Table 2. Herein each *Race/Ethnicity* variable was found to significantly predict Total Voting Age Population using alpha  $\alpha = .05$ . This means there is a 95% probability that observed relationships accurately describe the data as analyzed. Again, neither Political Party predicted any change ( $\beta = .00$ ) in Total Voting Age

Population. As such, consistent with the analysis of the districts of concern to this case, neither Republican or Democratic Political Party affiliation predicts change in the Total Voting Age Population.

Table 2. Relationship between Race/Ethnicity, Political Party, and Voting Age Population in non-Concerned Districts

Variable	$\beta$	SE	df	t	t-crit	p	ME
Intercept	0	0	14	143.72	2.14	<.01	0
Race							
Anglo VAP	1.04	0	14	248.78	2.14	<.01	.01
Black VAP	.98	.02	14	56.06	2.14	<.01	.04
Asian VAP	1.02	.02	14	46.3	2.14	<.01	.05
Hispanic VAP	.99	0	14	548.3	2.14	<.01	0
Political Party							
Republican	0	0	14	-4.08	2.14	<.01	0
Democratic	0	0	14	67.58	2.14	<.01	0

*Note.* VAP is an acronym for Voting Age Population.

*Note.* New District data was retrieved from: <https://data.capitol.texas.gov/dataset/planc/>, which used the United States Census Bureau data released during August, 2021

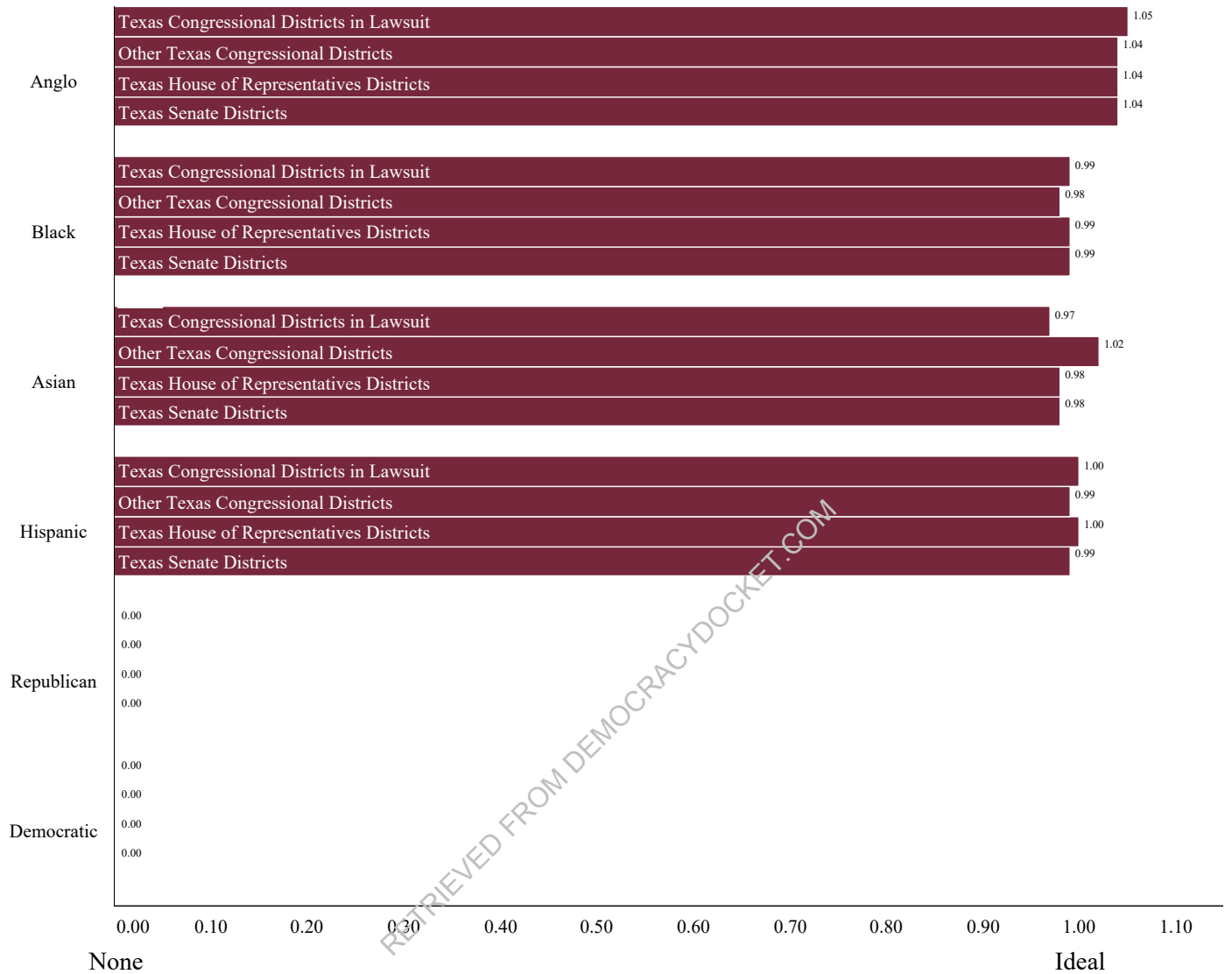
*Note.* 2020 data was retrieved from: <https://redistrictingdatahub.org/dataset/texas-116th-congressional-district-vap-data-2020/>, which used the United States Census Bureau data released during August, 2021

*Note.* Political Party data was retrieved from: <https://www.brennancenter.org/our-work/analysis-opinion/anatomy-texas-gerrymander>

Two-additional Multiple Linear Regression models were constructed to determine if the Congressional results were consistent with redistricting approaches taken for the Texas House and Texas Senate. Anglo Voting Age Population again disproportionately increases the Total Voting Age Population. That is, Total Voting Age Population increases by more-than one-person per-Anglo, and increases less-than one-person per-Black or Asian person. Moreover, within Texas Senate Districts, Hispanics no longer scale perfectly as in the First and Third Models. As such, our findings suggest manipulation of redrawn Texas districts to change racial proportionality within districts.

Figure 2 provides a visual representation of all four Multiple Linear Regression outputs. Herein, it is demonstrated that the largest disproportionate increase in Anglo Voting Age Population relative to Total Voting Age Population was within the Congressional Districts.

Figure 2. Relationship between Race/Ethnicity, Political Party, and Voting Age Population Across the Texas Congressional, House of Representatives, and Senate Districts



## Appendix

## Appendix A

## Relationship between Race/Ethnicity, Political Party, and Voting Age Population

Variable	$\beta$	<i>SE</i>	<i>df</i>	<i>t</i>	<i>t</i> -crit	<i>p</i>	<i>ME</i>
Intercept	0	0	8	566.13	2.31	<.01	0
Race							
Anglo VAP	1.05	0	8	528.95	2.31	<.01	0
Black VAP	.99	.01	8	183.51	2.31	<.01	.01
Asian VAP	.97	.01	8	91.15	2.31	<.01	.02
Hispanic VAP	1	0	8	289.02	2.31	<.01	.01
Political Party							
Republican	0	0	8	-7.12	2.31	<.01	0
Democratic	0	0	8	168.29	2.31	<.01	0

*Note.* VAP is an acronym for Voting Age Population

*Note.* New District data was retrieved from: <https://data.capitol.texas.gov/dataset/planc/>, which used the United States Census Bureau data released during August, 2021

*Note.* 2020 data was retrieved from: <https://redistrictingdatahub.org/dataset/texas-116th-congressional-district-vap-data-2020/>, which used the United States Census Bureau data released during August, 2021

*Note.* Political Party data was retrieved from: <https://www.brennancenter.org/our-work/analysis-opinion/anatomy-texas-gerrymander>

## Appendix B

## Relationship between Race/Ethnicity, Political Party, and Voting Age Population in Texas House of Representative Districts

Variable	$\beta$	<i>SE</i>	<i>df</i>	<i>t</i>	<i>t</i> -crit	<i>p</i>	<i>ME</i>
Intercept	0	0	143	1,049.25	1.98	<.01	0
Race							
Anglo VAP	1.04	0	143	1,067.46	1.98	<.01	0
Black VAP	.99	0	143	356.18	1.98	<.01	.01
Asian VAP	.98	.01	143	189.74	1.98	<.01	.01
Hispanic VAP	1	0	143	984.45	1.98	<.01	0
Political Party							
Republican	0	0	143	573.48	1.98	<.01	0
Democratic	0	0	143	543.8	1.98	<.01	0

*Note.* VAP is an acronym for Voting Age Population

*Note.* Texas House of Representative Voting Age Population data was retrieved from: <https://redappl.capitol.texas.gov/>

*Note.* Political Party data was retrieved from: <https://house.texas.gov/members/>

## Appendix C

## Relationship between Race/Ethnicity, Political Party, and Voting Age Population in Texas Senate Districts

Variable	$\beta$	$SE$	$df$	$t$	$t$ -crit	$p$	$ME$
Intercept	0	0	24	417.04	2.06	<.01	0
Race							
Anglo VAP	1.04	0	24	500.92	2.06	<.01	0
Black VAP	.99	.01	24	71.23	2.06	<.01	.01
Asian VAP	.98	.01	24	173.2	2.06	<.01	.03
Hispanic VAP	.99	0	24	546.13	2.06	<.01	0
Political Party							
Republican	0	0	24	107.45	2.06	<.01	0
Democratic	0	0	24	205.45	2.06	<.01	0

*Note.* VAP is an acronym for Voting Age Population

*Note.* Texas House of Representative Voting Age Population data was retrieved from:  
<https://data.capitol.texas.gov/dataset/plans2168>

*Note.* Political Party data was retrieved from: <https://senate.texas.gov/members.php>

RETRIEVED FROM DEMOCRACYDOCKET.COM

## EXHIBIT F

RETRIEVED FROM DEMOCRACYDOCKET.COM



Case 3:21-cv-00259-DCG-JES-JVB Document 619 Filed 10/19/22 Page 57 of 62

Compactness Analysis - Area Based Measures

CONGRESSIONAL DISTRICTS - PLANC2193

District	Area Rubber Band	Perimeter to Area
1	0.695	0.156
2	0.694	0.228
3	0.850	0.340
4	0.526	0.076
5	0.640	0.147
6	0.618	0.154
7	0.476	0.092
8	0.626	0.225
9	0.685	0.164
10	0.657	0.185
11	0.740	0.305
12	0.742	0.208
13	0.670	0.280
14	0.561	0.161
15	0.544	0.111
16	0.732	0.230
17	0.647	0.137
18	0.539	0.068
19	0.839	0.532
20	0.633	0.129
21	0.834	0.305
22	0.651	0.164
23	0.727	0.197
24	0.672	0.114
25	0.709	0.259
26	0.633	0.149
27	0.819	0.369
28	0.645	0.209
29	0.573	0.092
30	0.750	0.197
31	0.719	0.198
32	0.482	0.077
33	0.390	0.038
34	0.743	0.267
35	0.440	0.078
36	0.772	0.248
37	0.718	0.154
38	0.587	0.125

\* Compactness measures: Each measure is reported on a scale from 0 to 1, with numbers closer to 1 being more compact. A score of N/A indicates the measure could not be calculated.

1. "Area Rubber Band" is the ratio of the area of the district to the area of the smallest convex polygon enclosing the district.

2. "Perimeter to Area" is the ratio of the area of a circle with the same perimeter as the district to the area of the district.

RETRIEVED FROM DEMOCRACYDOCKET.COM

## Supplemental Report

I have previously filed a report in this case. This should be considered a supplement to that report.

I have extensive experience in the process of actually drawing the Districts that were adopted by the Court in the 1971 Texas statewide redistricting litigation. I have also testified on the redistricting process in each of the statewide redistricting cases thereafter and on dozens of other cases redistricting cases in both State and Federal Court. .

I have been hired to do the redistricting in more than 60 jurisdictions including the Houston ISD, the Houston Community College District, the Edwards Underground Aquifer District, the City of San Antonio, Bexar County, the City of Austin and Travis County.

### Harris County

1. In 2020 there were three Districts electing minority Congressmen in the Harris County mix. These were CD 9--Al Green, CD 18-- Shiela Jackson Lee and CD 29-- Sylvia Garcia.

2. Under the 2020 Census District 9 was only 0.49% (3,811) over populated. District 18 was just 3.9% overpopulated (29,921) and District 29 was just 6.5% underpopulated (-49,732). They all adjoined each other and normally one would expect that these three districts would have equalized the population primarily by areas from Congressional Districts 9 and 18 into District 29. District 9 has

traditionally been located in Harris County and included only a small portion of Fort Bend County which was effectively the area that Houston extends into Fort Bend County.

3. District 7 which adjoins Districts 9 and 18 also had a significant minority population. It was only 4.3% overpopulated. Congressional District 7 has been located entirely within Harris County for 70 years (since the original one person one vote case in the middle 1960s). I would have also expected that the district would have been maintained by simply reducing the population slightly and keeping it entirely within Harris County.

4. Instead, what the State did was to remove more than half the population of District 7 and then add substantial population from District 9 (Green) which forced District 9 further into Fort Bend County (152,000 persons) and for the first time into Brazoria County picking up almost 90,000 persons.

5. Fort Bend County at 822,779 persons was just slightly in excess of a perfect Congressional District. In Fort Bend County, a coalition has developed of Hispanics African Americans and Asian Americans resulting in the election of

several minority candidates including an Asian American County Judge. Had Districts 9, 18 29 and 7 been handled by minimal modification, it would have left the logical thing of having District 22 entirely within Fort Bend County.

6. I consider this to be a departure from normal redistricting process in Texas and to have resulted in a racial gerrymander, It disadvantages District 9 because it replaces almost half of the population and for the first time includes 90,000 persons from Brazoria County. It avoids the logical creation of a Fort Bend District which would provide a significant opportunity to elect a minority Congressman.

Metroplex

7. In the Dallas Fort Worth Metroplex it is significant that an Hispanic was almost elected in District 24 Candace Valenzuela lost in the 2020 General election to a White opponent by 1.3 percentage points (48.8% to 47.3%). District 24 was a highly compact District anchored in South lake area of suburban Tarrant County and the Northwestern suburban area of Dallas County. Under the plan in effect in 2020 District 24 was only 42.5% White and 57.5% minority. The new District 24

at issue here was radically redrawn and is now 61.6% White and only 38.4% minority. This is a classic case of cracking.

8. This is done by moving a large part of neighboring District 32 into District 24. This includes the Park Cities and Southern Methodist area of north-central Dallas County. District 32 was only slightly over populated. It included 53.1% minority and 46.9% White under the plan in effect in 2020. The District 32 in the plan at issue here is radically redrawn and is now 67.8% minority and 32.2% White. This is the classic case of packing.

9. District 30 was only 2% over populated and at more than 80% minority population. Normally the District would have been reduced slightly. Instead, a large number of Blacks were moved from District 30 into District 32 which was already electing a Black Congressman. As indicated it further packed District 32 and set up the pattern that resulted in the cracking of District 24. I consider this to be a racial gerrymander. This is supported by the highly irregular shape of Districts 6, 24, 32 and 33.

October 19, 2022

(S) George Korbel  
George Korbel