

<p>SUPREME COURT, STATE OF COLORADO          Ralph L. Carr Judicial Center          2 East 14<sup>th</sup> Avenue          Denver, CO 80203</p>	
<p>Original Proceeding Pursuant to Article V, Section 44.5 of the Colorado Constitution</p>	<p><b>▲ COURT USE ONLY ▲</b></p>
<p><b>In Re Colorado Independent Congressional Redistricting Commission</b></p>	<p>Supreme Court Case No:          2021SA208</p>
<p>Attorneys for Eagle County, Colorado          Bryan R. Treu, #29577          Eagle County Attorney          Christina C. Hooper, #38271          Senior Assistant County Attorney          P.O. Box 850          Eagle, Colorado 81631          Phone: 970-328-8685          bryan.treu@eaglecounty.us          christina.hooper@eaglecounty.us</p>	
<p><b>EAGLE COUNTY'S OBJECTION TO THE          FINAL CONGRESSIONAL REDISTRICTING PLAN</b></p>	

## **CERTIFICATE OF COMPLIANCE**

I certify that this Brief complies with all applicable requirements of C.A.R.

32. Specifically, the undersigned certifies that this brief contains 3,662 words (including headings and footnotes but excluding the Case Caption, Certificate of Compliance, Table of Contents, Table of Authorities, Signature Blocks, Certificate of Service, and Appendices), which is less than 9,500 words. I acknowledge that my brief may be stricken if it fails to comply with any of the requirements of C.A.R. 32.

OFFICE OF THE EAGLE COUNTY ATTORNEY

By: /s/ Christina Hooper

## TABLE OF CONTENTS

I.	Identity of the Interested Party.....	p.1
II.	Legal Standard.....	p.1
III.	Background.....	p.5
IV.	Summary of the Argument.....	p.6
V.	Argument.....	p.8
A.	Eagle County as a Whole Should be a Community of Interest for Congressional Redistricting.....	p.8
B.	The Final Plan Arbitrarily Divides Smaller Discrete Communities of Interest in Eagle County.....	p.10
1.	Cordillera.....	p.11
2.	Frost Creek, Salt Creek and Bruce Creek.....	p.11
3.	Upper Kaihab.....	p.12
4.	Highway 6 Neighborhood .....	p.12
C.	The Final Plan Disrupts Geographic Contiguity of Districts for Eagle County Residents.....	p.13
D.	The Commission Does Not Provide Adequate Rationale for Fragmenting Eagle County Communities of Interest.....	p.14
VI.	Conclusion.....	p.16
VII.	Oral Argument .....	p.17

## TABLE OF AUTHORITIES

### Cases

*Carstens v. Lamm*, 543 F. Supp. 68 (D. Colo. 1982).....pp. 1, 4, 7, 10

*In re Colorado General Assembly*, 828 P.2d 185 (Colo. 1992).....pp. 8, 15

### Colorado Constitutional Provisions

Colorado Const. art. V, §44.....pp. 1, 9, 10

Colorado Const. art. V, § 44.3..... *passim*

Colorado Const., art. V, §44.4.....pp. 5, 16

Colorado Const., art. V, §44.5.....pp. 2, 5

RETRIEVED FROM DEMOCRACYDOCKET.COM



## **I. Identity of the Interested Party**

The Eagle County Board of County Commissioners (“BoCC”) submits this brief on behalf of Eagle County residents and voters, whose communities of interest have been arbitrarily fragmented by the Colorado Independent Redistricting Commission’s (“Commission”) Final Congressional Restricting Plan (“Final Plan”) splitting Eagle County between two proposed congressional districts.

## **II. Legal Standard**

“The primary goal of an acceptable congressional redistricting plan should be ‘fair and effective representation of all citizens.’” *Carstens v. Lamm*, 543 F. Supp. 68, 79 (D. Colo. 1982); Colo. Const., art. V, §44(1)(c) and (d). The Commission was created by voter approval of Amendment Y to the Colorado Constitution in 2018 to foster competitive elections for members of the United States House of Representatives, and ensure that all Coloradoans receive fair and effective representation. Colorado Const., art. V, §44. As such, the Commission is tasked with dividing the state into congressional districts in accordance with express constitutional requirements. *Id.*

The Supreme Court is charged with the responsibility to review the final congressional redistricting plan submitted by the Commission for compliance with the criteria listed in § 44.3, article V of the Colorado Constitution. Colorado

Const., art. V, §44.5 (1). The Commission's submitted Final Plan must be approved, unless the Court finds that the Commission abused its discretion in applying, or failing to apply, the §44.3 constitutional requirements. *Id.* If upon review the Court determines that the Commission's Final Plan does not comport with the constitutional requirements, the Court shall return the plan to the Commission with reasons for disapproval. *Id.* at §44.5(3). If the Court returns the plan to the Commission, the Commission is required to hold a hearing with public participation, and return to the Court with an adopted plan that resolves the reasons for disapproval. *Id.* at §44.5(4). A new plan must be finalized and approved by December 15, 2021. *Id.* at §44.5(5).

Constitutional requirements for a redistricting plan are summarized as follows:

- (1) A good faith effort to achieve mathematical population equality between districts, with justification for any variance;**
- (2) Districts that are contiguous geographic areas;**
- (3) Compliance with the federal "Voting Rights Act of 1965", 52 U.S.C. sec. 50301, as amended;**
- (4) As much as is reasonably possible, "the commission's plan must preserve whole communities of interest and whole political subdivisions, such as counties . . . ;"**

- (5) Districts that are compact as is reasonably possible; and
- (6) To the extent possible, the plan should maximize the number of politically competitive districts.

Colorado Const. art. V, § 44.3 (emphasis added).

A community of interest is defined as:

any group in Colorado that shares one or more substantial interests that may be the subject of federal legislative action, is composed of a reasonably proximate population, and thus should be considered for inclusion within a single district for purposes of ensuring its fair and effective representation.

Colorado Const., art V, §44(3)(b).

Such interests include, but are not limited to, matters reflecting:

- (A) Shared public policy concerns of urban, rural, agricultural, industrial, or trade areas; and
- (B) Shared public policy concerns such as education, employment, environment, public health, transportation, water needs and supplies, and issues of demonstrable regional significance.

*Id.*

This brief is being filed because the Final Plan fails to take reasonable efforts to preserve communities of interest, as required by Colorado Const., art. V, §44.3(2)(a). The Final Plan, if approved, would diminish the ability of Eagle County citizens to obtain fair and effective representation on significant matters of concern – including shared interests in federal policy and legislation regarding federal lands and water resources, which impact all

facets of life in Eagle County. Indeed, with respect to Counties like Eagle County, the Colorado Federal Court for the District of Colorado explained:

**Counties should remain undivided whenever possible** because the sense of community derived from established governmental units tends to foster effective representation. **Unnecessary fragmentation of these units not only “undermines the ability of constituencies to organize effectively but also ... increases the likelihood of voter confusion regarding other elections based on political subdivision geographics.”** The priority given to population equality makes the division of some county and municipal lines unavoidable. It is less certain, however, when faced with the choice of preserving county or municipal boundaries, which of these boundaries should prevail. **As a general rule, county lines are more meaningful in sparsely populated areas because the residents rely on the county government to provide all necessary services. Municipal boundaries, on the other hand, take precedence in densely populated areas.** These local units of government represent logical centers of community interest for urban residents who identify more closely with municipal rather than county services. The State of Colorado is divided into 63<sup>1</sup> counties which range in population from 408 to almost 500,000. It is inevitable that some county and municipal boundaries will be split when congressional districting lines are drawn. **We believe, however, that any splits in city and county boundaries should be made in a rational manner which attempts to minimize divisions in these local governmental units.**

*Carstens*, 543 F. Supp. At 88 (internal citations omitted)(emphasis added). Here, the Commission did not make the split through Eagle County in a rational manner,

---

<sup>1</sup> Colorado is currently divided into 64 counties.

or in a way targeted to minimize divisions in Eagle County communities of interest.

### **III. Background**

The Commission first convened on March 15, 2021. Pursuant to Colorado Constitution, art. V § 44.4, between June 29, 2021, and September 23, 2021, the Commission released for public review four different proposals for proposed congressional redistricting of Colorado. *See* Commission website:

<https://redistricting.colorado.gov/content/2021-redistricting-maps>.<sup>2</sup> The

“Preliminary Plan” was posted on June 23, 2021. *Id.* The “First Staff Plan” was posted on September 3, 2021. *Id.* The “Second Staff Plan” was posted on September 15, 2021. *Id.* The “Third Staff Plan” was posted on September 23, 2021. *Id.* On September 28, 2021, the Commission voted to approve the Third Staff Plan, with the “Coleman Amendment,” as the Final Plan. *Id.* The Final Plan was filed with this Court, as required by Article V, §44.5, on October 1, 2021. The Preliminary Plan, First Staff Plan, Second Staff Plan, Third Staff Plan and Final Plans are included here as Appendix A.

Notably, the Preliminary Plan, the First Staff Plan, and the Second Staff Plan proposed to unite the entirety of Eagle County in a single congressional district. Only the Third Staff Plan, released for the first time on September 23, 2021, split

---

<sup>2</sup> Commission website last visited October 8, 2021.

Eagle County between proposed Congressional District 2 (“CD2”) and proposed Congressional District 3 (“CD3”), dividing many discrete communities of interest (such as proximate populations operating together as communities), and also divides the larger community of interest that is the political subdivision of Eagle County itself. *Compare* Appendix A pp 1-3 with Appendix A pp 4-5. The Commission received numerous public comments from citizens asking for Eagle County to be represented as a single proposed congressional district *prior* to release of the Final Plan. *See* Appendix B. The Commission also received public comment from citizens directly opposed to the newly-released Third Staff Plan because it splits Eagle County communities of interest.<sup>3</sup> *Id.*

#### **IV. Summary of the Argument**

While the BoCC values the extraordinary work of the Commission and its staff, and certainly appreciates the difficulty involved in balancing the juxtaposing interests and requirements involved in the redistricting process, the BoCC submits that the Final Plan does not appropriately comport with objectives and criteria that must be incorporated into a judicially-approved redistricting plan. While the Final

---

<sup>3</sup> Some commenters provided feedback about *which* congressional district is best for Eagle County, and/or about how to foster appropriate political competitiveness between districts. It is important to note that these factors are not the focus or concern of the BoCC for purposes of this brief. Instead, the BoCC is concerned with the Final Plans’ division of multiple communities of interest.

Plan undoubtedly meets the constitutional criteria for population equality,<sup>4</sup> it goes too far on that sole criteria at the expense of other equally important considerations.

The Final Plan does not comply with the constitutional criteria requiring the Commission to make all reasonable efforts to preserve whole communities of interest. The Commission abused its discretion by dividing Eagle County at the expense of Eagle County's communities of interest, solely to achieve exact population equality, because exact population equality is not the sole criterion for review by this Court; focus on that sole criterion alone jeopardizes the rights of all citizens. *See* Colo. Const. Art. 5, §44.3; *Carstens*, 543 F. Supp at 85 (warning that approval of a plan on the basis of population alone ignores the realities of "fair and effective representation"). If the voters intended for population equality to be the sole or predominant factor for consideration, there would have been no reason to include the remaining factors for the Commission to strive to meet. Moreover,

---

<sup>4</sup> The Final Plan proposes a population base for the eight proposed congressional districts that varies by only a *single* person. *See* Final Plan. Six proposed districts will have a population of 721,714, and two will have a population of 721,715. This equates to a variance of 0.000138559%. While expert opinions may differ about how to express this incredibly minuscule percentage in words, it appears to be *fourteen ten-thousandths of one percent*, far less than the margin of error for the 2020 census itself. *See e.g.*, Table 7.1:

[https://www.census.gov/content/dam/Census/library/publications/2018/acs/acs\\_general\\_handbook\\_2018\\_ch07.pdf](https://www.census.gov/content/dam/Census/library/publications/2018/acs/acs_general_handbook_2018_ch07.pdf)

even if preservation of communities of interest must yield to the equality of population requirement, there must be some appropriate justification or showing that less drastic alternatives could not have satisfied the population requirement. *In re Colorado General Assembly*, 828 P.2d 185 (Colo. 1992). Nothing in the Commission record adequately justifies the sudden split of Eagle County communities of interest for the first time in its planning process on September 23, 2021, only five days before the Final Plan was approved.

## **V. Argument**

### **A. Eagle County as a Whole Should be a Community of Interest for Congressional Redistricting.**

Eagle County is located in the Rocky Mountain region of Colorado, with a land area of 1,694 square miles. As of the 2020 census, the population is 55,731. There are seven towns within Eagle County, but 45% of Eagle County's residents live in unincorporated areas. Eagle County draws hundreds of thousands of seasonal visitors each year, with tourism being the heart of the economy. Eagle County also has a long history of ranching and farming.

Approximately 78% of Eagle County land area is federally-owned property, some of which are federally protected Wilderness Lands. *See* Appendix C. Activities occurring on those federal lands – including but not limited to recreation, ranching, water storage, and water diversions – are the primary economic drivers



in Eagle County. Thus, federal policy and legislation related to these lands are of the utmost and critical importance to its residents.

As such, Eagle County residents plainly meet the definition of a “community of interest” under Colorado Const, art. V §§44(3)(b) and 44.3(2)(a). Eagle County residents are a group that shares one or more substantial interests in all federal policy regarding the nearly 850,000 acres of federal lands within its boundaries. *See* Colorado Const., art. V §44 (b)(II)(A) and (B). These shared public policy concerns relate to rural, agricultural and trade areas, as well as employment, environment, public health, transportation, water needs and supplies, and issues of demonstrable regional significance. *See Id.* Indeed, Eagle County has very recently experienced severe wildfires, federal highway road closures from fire-related mudslides, and has to face ongoing issues related to water, including the competing interests concerning supply, quality, recreation, environmental protections, irrigation rights, and interstate call obligations. Now, more than ever, federal leadership and local collaboration is critical to addressing these issues. In this light, Eagle County as a whole should be included within a single congressional district for purposes of ensuring its citizens receive fair and effective representation at a federal level. Instead, Eagle County voters in Dotsero, and the other discrete communities of interest described below, are now fractured from the greater community of interest that is Eagle County as a whole.

Further, as currently drawn, the Final Plan would leave no representation accountable to the residents of the communities and towns of Edwards, Eagle and Gypsum concerning the vast federal lands in southwestern Eagle County, which violates the constitutional requirement to use best efforts to ensure fair and effective representation for communities of interest concerning substantial interests that may be the subject of federal legislative action. Colorado Const., art. V, §§ 44(3)(b) and 44.3(2)(a), *see also*, Appendix C and Appendix D at p. 1. This is exactly what the *Carstens* court warned against. *Carstens*, 543 F.Supp, at 89.

**B. The Final Plan Arbitrarily Divides Smaller Discrete Communities of Interest in Eagle County**

Beyond the concern about division of the larger Eagle County community of interest, the BoCC is also largely concerned about division of multiple discrete communities of interest within Eagle County. For the Court's reference, Appendix D contains five pages of maps that are zoomed-in versions of the Final Plan<sup>5</sup>, with Eagle County data overlaid on the map. Appendix D is intended to highlight for the Court the way in which the line drawn by the Commission through Eagle County was done in an arbitrary way. The first page of Appendix D shows the Final Plan's proposed split of Eagle County in relationship to municipalities and

---

<sup>5</sup> The Final Plan interactive map is taken from the Commission website, last visited October 8, 2021: <https://redistricting.colorado.gov/content/congressional-final-approved>

federal lands. It also provides context for the zoom-in maps contained in the Appendix D pages that follow.

## **1. Cordillera**

The second page of Appendix D shows the Cordillera neighborhood in unincorporated Eagle County. This neighborhood is composed of a proximate population and closely aligned with the unincorporated Edwards community, with ingress and egress access only occurring through Edwards or Eagle to the I-70 corridor. The Final Plan splits through the middle of the Cordillera neighborhood, meaning property owners on one side of the street are in a different congressional district than the other side of the street. Cordillera is surrounded by federal land, its residents share policy concerns, and it is undoubtedly a community of interest, which has been fractured by the Final Plan.

## **2. Frost Creek, Salt Creek and Bruce Creek**

Page three of Appendix D shows the Frost Creek, Salt Creek and Bruce Creek Neighborhoods near the Town of Eagle, which are all fragmented between CD2 and CD3. These neighborhoods are accessible through the Town of Eagle, share the same post office, the same schools, the same stores, the same roads, the same service providers with Town residents. In order to ensure fair representation on shared federal policy issues, including but not limited to surrounding federal lands, and important water issues, these communities should at the very least be

considered communities of interest with *each other* and with the Town of Eagle, if not Eagle County as a whole. The Commission abused its discretion by dividing these communities of interest from each other, and dividing the Town of Eagle from portions of these neighborhoods.

### **3. Upper Kaibab**

The fourth page of Appendix D shows the Upper Kaibab neighborhood located in the immediate Town of Eagle vicinity. Most community members are unaware Upper Kaibab is not part of the Town jurisdiction. Like the neighborhoods described above, it is only accessible through the Town of Eagle. While the neighborhood is in unincorporated Eagle County, the population of Upper Kaibab is part of the proximate population of, and is directly aligned with the Town of Eagle as a community of interest, sharing post office, schools and likely all policy concerns with respect to the federal lands to the south, water policy, and the federally-funded I-70 interstate highway. Yet, the Final Plan has arbitrarily separated Upper Kaibab residents from their community of interest with the Town of Eagle.

### **4. Highway 6 Neighborhood**

Page 5 of Appendix D demonstrates that the residents living between the municipal boundaries of the Town of Eagle and the Town of Gypsum, but who are part of the proximate population of those communities, have been split into CD3

under the Final Plan, while all of their neighbors will be part of CD2. Under the Final Plan, neither Highway 6 Neighborhood residents, nor Town of Eagle and Town of Gypsum residents will have voter power to ensure election of congressional representatives in CD3 that are responsive and accountable on matters important to these communities of interest, such as policies and legislative decisions related to the federal lands that surround them.

### **C. The Final Plan Disrupts Geographic Contiguity of Districts for Eagle County Residents**

The BoCC recognizes that the Commission may have been attempting to connect the Roaring Fork Valley area of Eagle County (discrete southwest corner) as a community of interest with Pitkin County. However, the Commission did not draw the CD2 and CD3 lines that way. Instead, the result of the Final Plan is that numerous Eagle County residents of the Eagle River Valley are separated by large mountain ranges and therefore are more than fifty (50) miles away from other Eagle County constituents in CD3. In order to participate in CD3 events or meetings, these residents would need to travel through Glenwood Canyon in Garfield County or travel the unpaved Cottonwood Pass – trips that take upward of an hour and are not always possible due to weather and road-closures. The other consequence of the Commission's proposed dividing line for CD2 and CD3 is that other Eagle County residents within various community of interest are now in CD2, without appropriate representation for matters of significant policy concern

to them in their backyard – a huge amount of mostly federally-owned Eagle County land area that would be located in CD3, with very small number of Eagle County residents being part of CD3. For these reasons, the Final Plan does not appropriately meet the geographic contiguity constitutional requirement.

**D. The Commission Does Not Provide Adequate Rationale for Fragmenting Eagle County Communities of Interest**

The Eagle County Clerk and Recorder alerted the Commission that Eagle County communities of interest would be arbitrarily divided between CD2 and CD3 via email dated September 27, 2021, but her comments do not appear in the Commission's online record. As such, Appendix E is a copy of that correspondence for the Court's reference. In response to Clerk and Recorder O'Brien's concerns about the division of discrete communities of interests, Commission staff responded, in part, as follows:

Unfortunately, Eagle County is the only County in the proposed Congressional District 3 that is split, **meaning we must get the population of the district to within one person by including 10,408 or 10,409 people from Eagle County in that District.**

Appendix E (emphasis added). With this, it appears that the sole rationale for the Commission's fragmentation of Eagle County communities of interest is to support the Commission's perceived need to find population for CD3. *Id*

Equally concerning is that is not clear from the record before the Commission that the Commission could not have maintained communities of

interest within Eagle County, while still meeting the constitutional population equality requirement in some other way. *See In re Colorado General Assembly*, 828 P.2d at 195-96. The Final Plan provides a *fourteen ten-thousandths of a percent* variance in population. Given that small variances *are allowed with justification*, perhaps the Commission could create a plan that does not divide Eagle County, *and* still maintain a very trivial population variance. Perhaps for example, a variance of a one-tenth of one percent variance would be acceptable if communities of interest are also preserved. *See Colorado Const.*, art. V, §44.3(1)(a) and (2)(a); *In re Colorado General Assembly*, 828 P.2d at 196 (plan rejected when commission did not suggest why community of interest divisions would be equally or less adequate than the one adopted).

However, neither the BoCC nor the citizens of Eagle County can be sure because the Commission did not explain its last-minute decision to fracture Eagle County communities of interest, nor is there any evidence in the record that the Commission considered communities of interest within Eagle County at all. Undersigned counsel could not find one reference within any minutes of meetings of the Commission to any conversation, debate, rationale or consideration regarding the division of Eagle County as presented in the Final Plan. *See* <https://redistricting.colorado.gov/content/meeting-summaries>; *see also*, Commission meeting transcript attached as Exhibit D to Commission's brief in

support of Final Plan (no mention of Eagle County). This is surprising given that the Commission received significant public comment from Eagle County residents concerning these communities of interest with significant shared interests in federal public policy. *See* Appendix B. Even the Commission's brief in support of the Final Plan spends considerable time discussing preservation of communities of interest in other counties, municipalities and other communities of interest, but provides only the following notes with respect to Eagle County:

**“District 2:** . . .It includes the portion of Eagle County not in Congressional District 3.” Final Plan Brief, p. 6; and

**“District 3:** . . . it also includes a portion of Eagle County that includes all of the towns of Basalt and El Jebel.” Final Plan Brief, p. 7.

With this, the Commission fails to even note the many other communities of interest identified in this brief that were fractured and moved to proposed CD3.

## **VI. Conclusion**

For these and the foregoing reasons, it was an abuse of discretion for the Commission to adopt the Final Plan splitting the Eagle County community of interest. As such, the BoCC respectfully requests this Court disapprove the Final Plan for failure to comply with the requirements of Colorado Const., art. V, §44.4(2)(a), and send the matter back to the Commission for further planning and proceedings.



## **VII. Oral Argument**

Due to longstanding and inflexible travel plans of undersigned counsel, and nearly all Eagle County Attorney's Office staff during Eagle County School District's fall break October 11-15, 2021, as well as the short notice necessitating the BoCC's participation in this matter, counsel for the BoCC is regrettably unable to appear for oral argument on October 12, 2021.

Respectfully submitted this 8<sup>th</sup> day of October, 2021.

OFFICE OF THE EAGLE COUNTY ATTORNEY

By: /s/ Christina Hooper

ATTORNEYS FOR EAGLE COUNTY BOARD OF  
COUNTY COMMISSIONERS

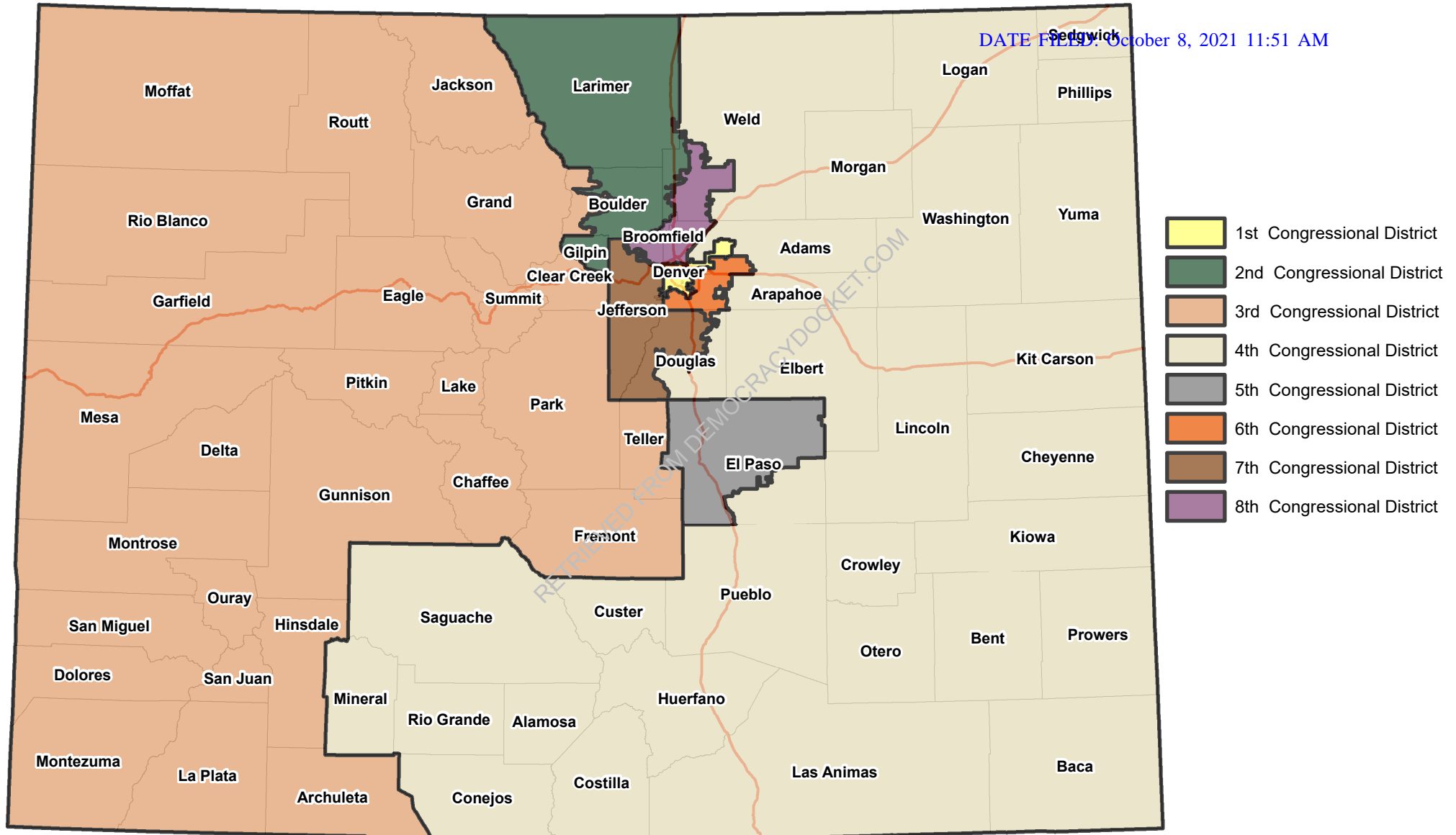
### **CERTIFICATE OF DELIVERY**

I hereby certify that on October 8, 2021, a true and correct copy of the foregoing **EAGLE COUNTY’S OBJECTION TO THE FINAL CONGRESSIONAL REDISTRICTING PLAN** was sent via Colorado Courts E-Filing to all counsel of record.

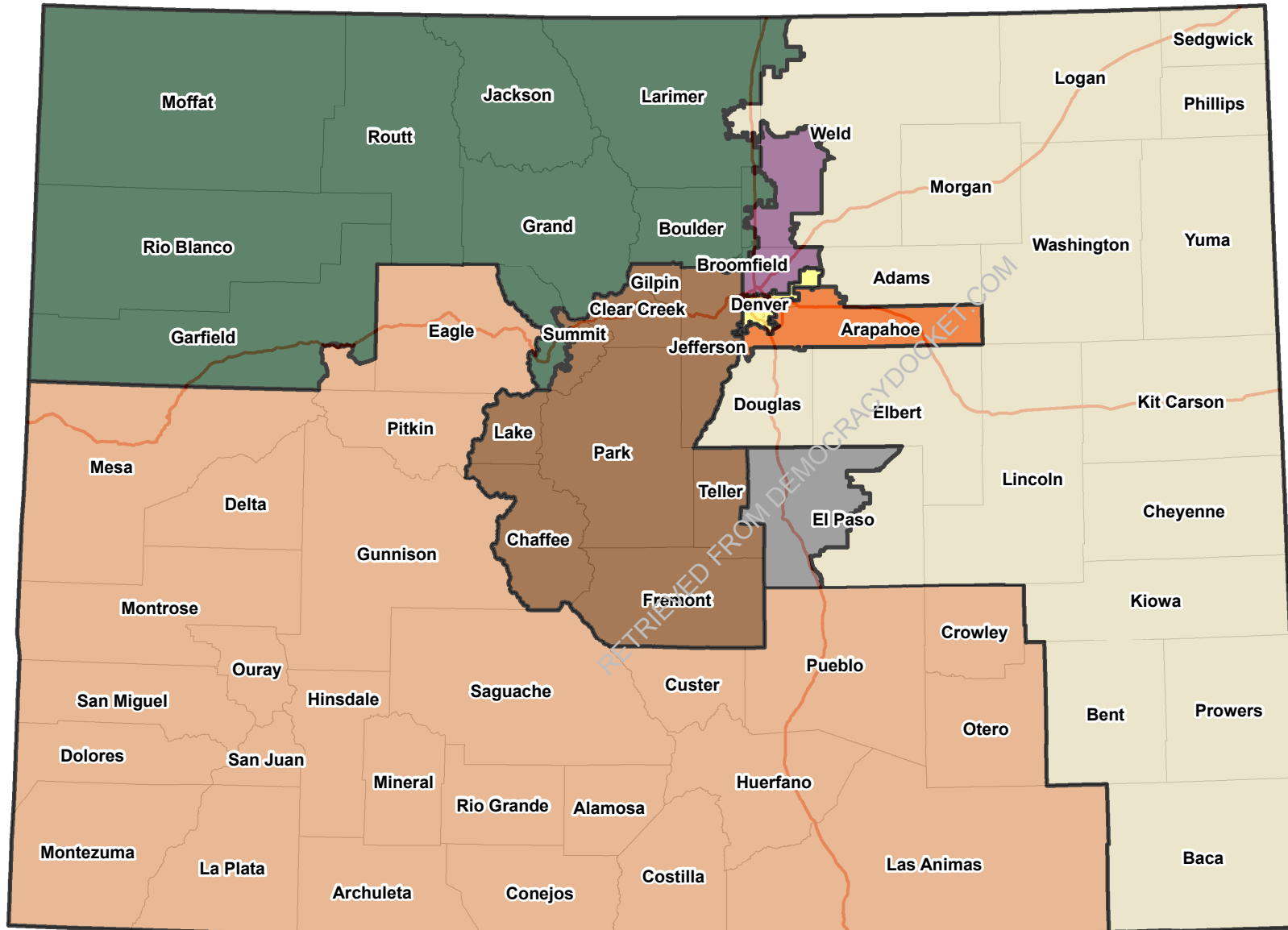
By: /s/ Christina Hooper

RETRIEVED FROM DEMOCRACYDOCKET.COM

# Colorado Congressional Districts (Preliminary Map)

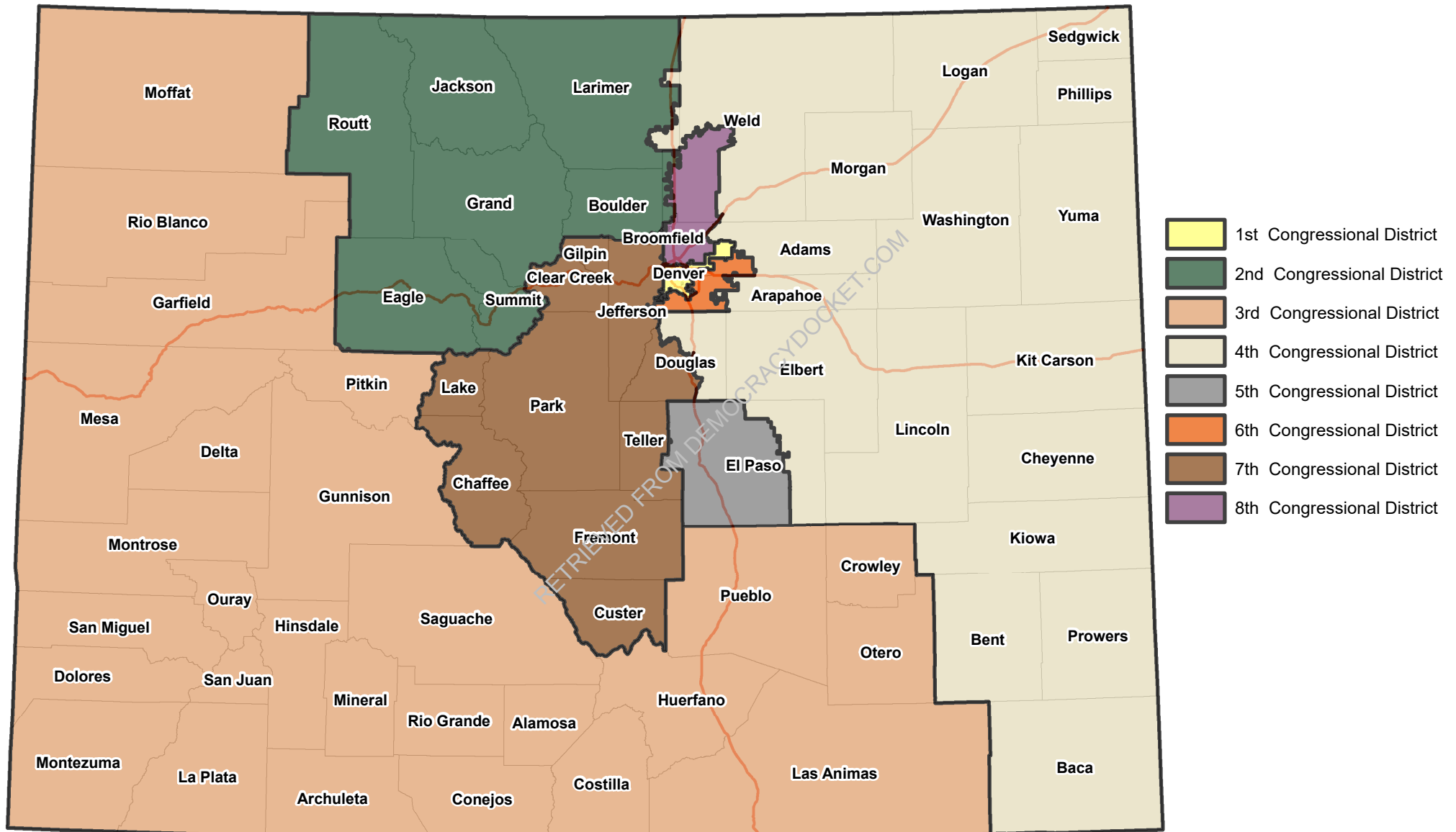


# Colorado Congressional Districts (First Staff Plan)

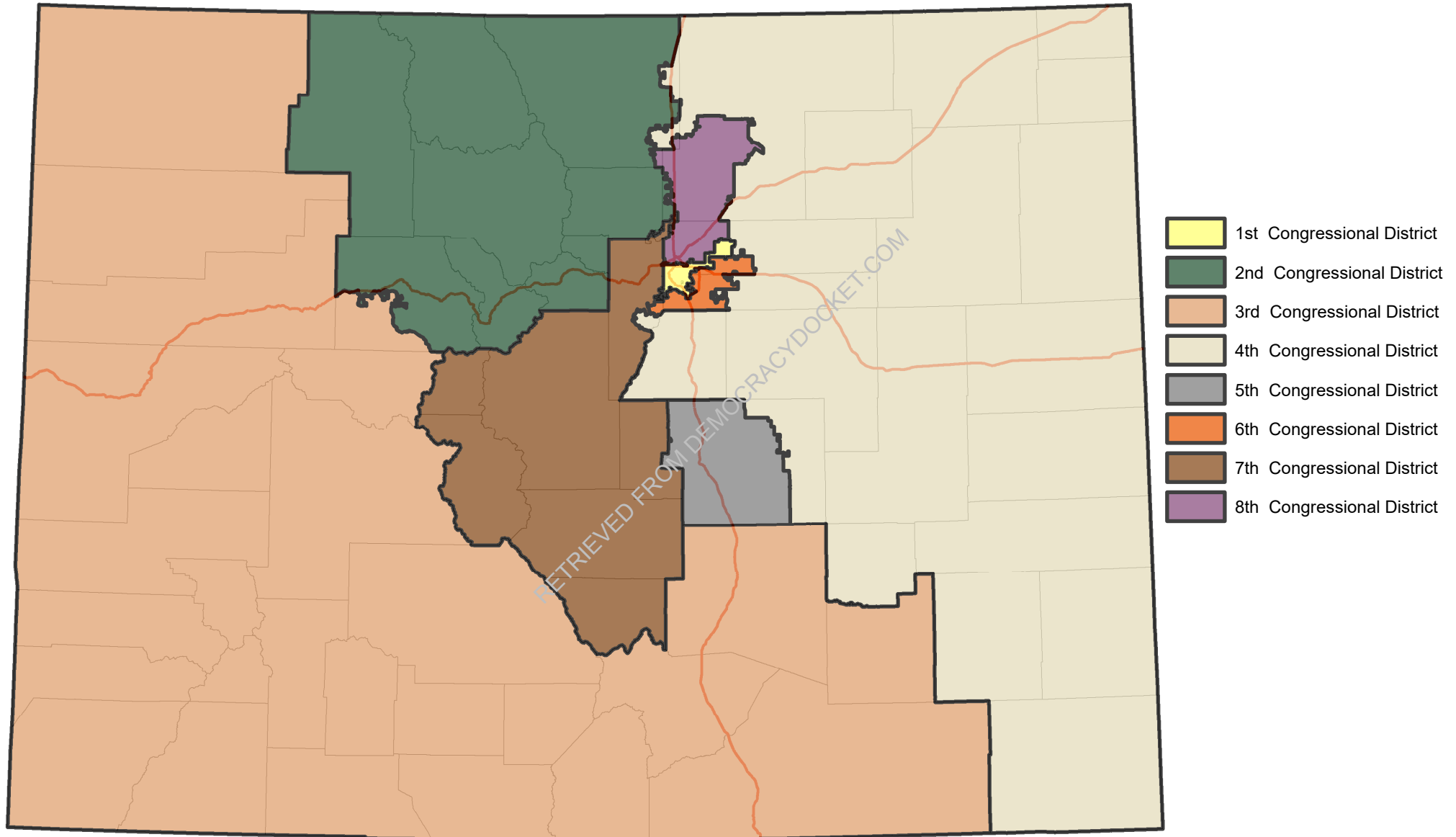


- 1st Congressional District
- 2nd Congressional District
- 3rd Congressional District
- 4th Congressional District
- 5th Congressional District
- 6th Congressional District
- 7th Congressional District
- 8th Congressional District

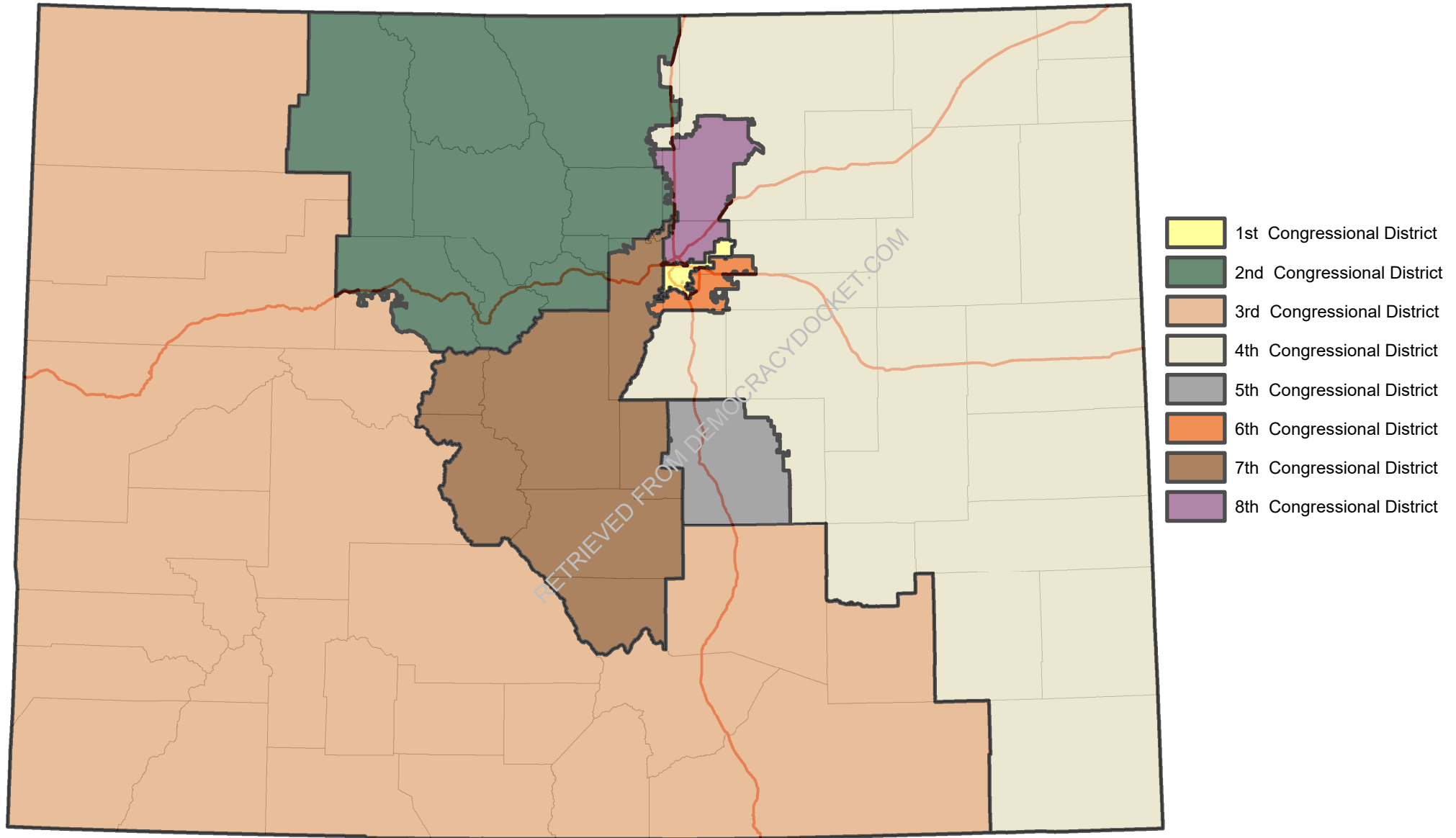
# Colorado Congressional Districts (Second Staff Plan)



## Colorado Congressional Districts (Third Staff Plan)



## Colorado Congressional Districts (Final Approved Plan)



[Skip to main content](#)



Colorado Independent Redistricting Commissions

DATE FILED: October 8, 2021 11:51 AM

- [Commissions](#)  
[Congressional Redistricting](#) [Legislative Redistricting](#) [Considering Maps, Amendments, and Additional Plans](#) [Commissioner Selection Process](#) [Historical Reports of the Colorado Reapportionment Commission](#)
- [Meetings](#)  
[Upcoming Meetings](#) [Meeting Materials - Congressional](#) [Meeting Materials - Legislative](#) [Meeting Archive](#)
- [Public Engagement](#)  
[Press Opportunities for Public Engagement](#) [View Written Public Comments](#) [Submit Public Comment](#) [Enviar Comentarios Públicos](#)
- [Legal Requirements](#)  
[Colorado Redistricting Laws](#) [Commission Rules](#) [Commission Policies and Guidelines](#) [Legal and Ethical Obligations of Commissioners](#)
- [Maps](#)  
[2021 Redistricting Maps](#) [2011 Redistricting Maps](#) [2001 Redistricting Maps](#) [Data](#) [Redistricting Online Portal](#)
- [FAQ](#)

## Public Comments

Attachments and public comments submitted by email can be viewed [here](#).

Filter or Sort Public Comments

Commission type

Comment contains

Name contains

Zip starts with

**Elizabeth Rychel**

Commission: both

Zip: 81620

Submitted: September 27, 2021

Comment:



Leave Eagle County in CD3

**Heather Lemon**

Commission: both

Zip: 81620

Submitted: September 25, 2021

Comment:

I live in Avon Co and have nothing in common with Boulder. I want Eagle to remain rural(all of it) and not make us pawns for the cities to play with. We are always bouncing around with no good reason why we can't remain as one county and tied to our rural roots of the West.

**Chris Romer**

Commission: both

Zip: 81620

Submitted: September 17, 2021

Comment:

The latest maps are an improvement over previous iterations - kudos to the commission for the constant improvement. Vail Valley Partnership is Eagle County's regional chamber of commerce and economic development organization, dedicated to the vitality of the Eagle River Valley. As such, we are encouraged that the commission has kept the Eagle River Valley together in the current congressional and state legislative maps. Congressional District 2 is a good fit for Eagle County and our community is well represented in the latest state house and senate maps as well. We encourage you to keep the Eagle River Valley together in the same districts moving forward with future maps. Thank you for your work on this effort.

**Paul Warren**

Commission: congressional

Zip: 81620

Submitted: September 17, 2021

Comment:

There is no reason the Western Slope should have Boulder included in the district. We have nothing in common with Boulder.

**Mark Goodban**

Commission: both

Zip: 81620

Submitted: September 16, 2021

**Comment:**

Please keep Colorado's water first. We don't belong to other silly states that seem to think they own us. The water recycles itself. Some day your gonna beg for a shower if you allow other states to make you do what they want

**Robert Carter**

Commission: both

Zip: 81620

Submitted: September 16, 2021

**Comment:**

Eagle County should remain in the 3rd district. We have nothing in common with Boulder or Larimer counties.

**Nancy Adam**

Commission: congressional

Zip: 81620

Submitted: September 10, 2021

**Comment:**

This email is in opposition to the proposed redistricting that will have the effect of eliminating meaningful representation to the rural western slope Colorado residents. Colorado is very diverse. The needs, interests, families and employment of rural western Colorado is vastly different from metro areas. Our lives in the rural part of the state are often governed by tourism and agriculture. The interests are significantly different from metro area residents. The daily lives of people in rural Colorado are different. Many of our emergency services are volunteer, our roads are open, public transportation is limited or non-existent, natural disasters such as wild fires and floods are a real life threat. Our outlook and attitudes are different. Yesterday my husband was driving home from taking care of the horses at the ranch, he saw a man walking down the road in orange carrying an AR style rifle. My husband waived at the man who smiled and waived back. My husband's thought was only that he hoped the man knew of the large mountain lion who lives in the area. This interaction and outlook would obviously not be the same in Boulder. The current map will strip western Colorado from any meaningful representation. Please respect and address the consistent strong statements at the hearing at the Steamboat Springs meeting where the speakers emphasized their alignment with Eagle County, and not with Boulder County, and draw a map that provides meaningful representation for all citizens, not just the urban residents. Thank you, Nancy Adam

**Peter Fralick**

Commission: both

Zip: 81620

Submitted: August 15, 2021

**Comment:**

First, thank you for the opportunity to voice my comments on redistricting. The Western slope has a shared interest. The geography in D3 is unique. As a result, the ski industry, construction, transportation and population density are unique to all of D3. So these communities have shared interests and should be joined together as a whole. Finally, Eagle County is currently in two separate districts, I think it would be better to have all of Eagle County in a single district. Eagle County is united and has shared interests linked by the resort and tourism industry. I support the initial Congressional District 3 redistrict boundaries which allow all of Eagle County to be represented by CD3. Please keep the western slope and Eagle County whole.

### Meredith Gill

Commission: congressional

Zip: 81620

Submitted: March 29, 2021

Comment:

Town of Avon, Eagle County: 1) Shared interests: outdoor recreation, land and water conservation, wildlife conservation, and hunting. 2) Public policy concerns: land and water use. 3) Geographic areas or features: Holy Cross Wilderness Area, White River Ntl Forest access, wildlife corridors. 4) a) This community is VERY concerned about water resources, and the City of Aurora's interest in further water development of Holy Cross Wilderness and Homestake Reservoir and Creek. My family has been in NE CO, on the S.Platte River, for over 170 years, and is very familiar with the entire State. I've been in Eagle County for nearly 35 years. By far, the most pressing resource is water. IMHO, Aurora should not be issued more water permits. Also, the Ogalala Aquifer is over used, and permits should continue to be stopped or rescinded. CO, and the High Plains, can only support a limited number of people. Please, don't continue to facilitate suburban sprawl, or continue to ruin this great State and geographical area. To maintain quality of life, CO should remain wild, and not turn into Europe, all over again. Learn from history! b) It's a peaceful, bipartisan valley. Republicans, particularly with agricultural backgrounds, are still residents here. The area doesn't completely ideologically align with Boulder. However, if we must align for water rights court, so be it.

### David Williams

Commission: congressional

Zip: 81620

Submitted: March 20, 2021

Comment:

My name is David O. Williams and I live in unincorporated Eagle County in an area known as EagleVail. Not only is Eagle County divided between CD2 and CD3, but EagleVail is divided with some of my neighbors in CD2 and the rest of us in CD3. Western Eagle County has much more in common as an outdoor recreation and ski county with neighboring Summit and in fact with northern Front Range communities such as Boulder and Fort Collins than with mining and extractive industry hubs such as Grand Junction, whose population currently controls who represents us in Congress. Please consider no longer splitting communities and counties and moving all of Eagle County into CD2. Thanks for your time, consideration and hard work.

[Submit Public Comment](#)

[Contact Us](#)

[Commission Staff](#)

[Sign Up for Our Mailing List](#)

[Twitter](#)

[Facebook](#)

[Instagram](#)

**General Information**

[Find Your US Representative](#)

[Find Your State Legislator](#)

[US Census Bureau](#)

[IT Sign In](#)

RETRIEVED FROM DEMOCRACYDOCKET.COM

[Skip to main content](#)



Colorado Independent Redistricting Commissions

- [Commissions](#)  
[Congressional Redistricting](#) [Legislative Redistricting](#) [Considering Maps, Amendments, and Additional Plans](#) [Commissioner Selection Process](#) [Historical Reports of the Colorado Reapportionment Commission](#)
- [Meetings](#)  
[Upcoming Meetings](#) [Meeting Materials - Congressional](#) [Meeting Materials - Legislative](#) [Meeting Archive](#)
- [Public Engagement](#)  
[Press Opportunities for Public Engagement](#) [View Written Public Comments](#) [Submit Public Comment](#) [Enviar Comentarios Públicos](#)
- [Legal Requirements](#)  
[Colorado Redistricting Laws](#) [Commission Rules](#) [Commission Policies and Guidelines](#) [Legal and Ethical Obligations of Commissioners](#)
- [Maps](#)  
[2021 Redistricting Maps](#) [2011 Redistricting Maps](#) [2001 Redistricting Maps](#) [Data](#) [Redistricting Online Portal](#)
- [FAQ](#)

## Public Comments

Attachments and public comments submitted by email can be viewed [here](#).

Filter or Sort Public Comments

Commission type

Comment contains

Name contains

Zip starts with

**DANIEL SCHERER**

Commission: both

Zip: 81621

Submitted: September 27, 2021

Comment:

The interests of the western slope will not be represented in your proposed plan. Please leave all of the western slope together in one district.

**Donna Grauer**

Commission: congressional

Zip: 81621

Submitted: September 22, 2021

Comment:

I would like to understand more specifics on the portion of Eagle Co that is in CD3 in the latest iteration of the congressional maps. Eg, I live in Basalt in Eagle Co... is this in Cd3? Also, I am not clear how El Jebel is split between cd2 and Cd3.

**Donna Grauer**

Commission: congressional

Zip: 81621

Submitted: September 22, 2021

Comment:

I would like to understand how the Town of el jebel is split. technically it isn't even a town, but I am not clear what part of Eagle co goes into Cd3.

**Adam Olson**

Commission: both

Zip: 81621

Submitted: September 22, 2021

Comment:

Hello, My name is Adam Olson and I am here to show support for the Schuster redistricting map. I am a lifelong constituent of Colorado. This map make the most sense in that it creates both safe GOP and DEM districts, and splits the rest of the state into bipartisan competitive districts, allowing for diverse and inclusive future elections. Thank you for your time and for considering my opinion. Adam Olson

**Norman Bacheldor**

Commission: both

Zip: 81621

Submitted: September 19, 2021

Comment:

I am strongly not in favor of redistricting a portion of House District 3 into HD 2. There really is almost no commonality with Boulder area. Certainly we are all Coloradans and want what is best for our families and communities. However commonality for the most part ends there. In 2020 Garfield and Eagle county suffered a huge loss with the Grizzly Creek fires that shut down I-70 and isolated our communities. We cared deeply about that issue and so did our State and Federal congressional representatives. They fought to get us the hell we needed and rallied support at all levels. Running through that same canyon is the Colorado River, and it's watersheds. Western slope water rights need to be protected against the enormous pressure from all downstream users. As important to Western Colorado water users is the constant battle to keep water on the western side of the Continental Divide and not have water diversions to satisfy the growth frenzy of the front range. I remember some 40 years ago I was with a college student group visiting the Capital. I stayed late and was invited to a bar commonly frequented by legislators. I ended up in a long discussion on water with a leading state senator and high official of the City of Denver. It was clearly stated that for the sake of representing the Senator's community and the Denver official's job performance that a relentless effort was to divert water to the eastern watershed. That long ago story is an example why Western Colorado must have its own representation in the Colorado watershed of Garfield and Eagle counties. We can't be thrown in with Boulder area. Our voice would become silent. Water policy therefore water availability is the single most important factor to maintain Western Colorado agriculture ranch and farm lands. It is said that "might makes right" if persons wish to bully the disadvantaged. Please resist the easy political victory of redistricting a portion of HD 3 and place it in HD 2. Instead do what is right, not by might but by ethics and keep Garfield and Eagle county family represented at the State and Federal levels by not combining with Boulder area. Be fair to Western Colorado and make a good decision that is ultimately good for all of Colorado by preserving for us the voice of the West.

**Nancy M Bacheldor**

Commission: congressional

Zip: 81621

Submitted: September 19, 2021

Comment:

I copied this from an article I read as it is very clear and states my beliefs. "The Western Slope's vital relationship with water alone is enough to designate it as a community of interest bound by the shared responsibility of stewardship. However, the Western Slope also has commonalities regarding how the region uses water. The Western Slope's agricultural, industrial, and recreation economies rely on well-informed local representatives to protect the community's water at the state and federal levels. To split the Western Slope in any way would compromise the unity required to properly represent water interests in the region. There is also a clear divide between the Western Slope and front range communities, clearly designating western Colorado as a community with unique federal interests. Though many of our communities do not have the tax base of their front range counterparts, they still must provide the essential services of government: safe roads and bridges, law enforcement, public schools, and critical infrastructure with minimal resources. These challenges are not experienced by front range communities where virtually no federally owned lands exist. While federal lands are preserved for the benefit of all Americans, the day-to-day responsibilities of preservation fall upon those who live closest to those lands. These lands are managed for multiple uses – from livestock grazing to energy extraction to outdoor recreation. Over generations, communities on the Western Slope have worked with federal agencies to develop and demonstrate best practices for multi-use lands for the country and these uses are limited to county border. The Western Slope must be maintained as a result. Colorado has more than 24.4 million acres of forestland and many of these forests include the headwaters of rivers that provide reliable, affordable water supplies which are foundational to the environment, economy, and quality of life in rural Colorado. In fact, rangeland and forest are the predominant land uses in the Colorado Basin (85%), with forested land present throughout many parts of the basin. A substantial portion of the basin is comprised of federally owned land, with livestock, grazing, recreation, and timber harvesting as the predominant uses on those lands. A Colorado Statewide Forest Resource Assessment identified 642 watersheds susceptible to damaging wildfire, and 371

forested watersheds with high to very high risk from post-fire erosion, many of these watersheds, encompassing about 9.4 million acres of spruce-fir, aspen and pine forests that contain critical infrastructure for municipal drinking water supplies., ALL of these forests reside west of the continental divide. The San Luis Valley has unique agriculture interests and should not be divided. This region should be kept whole and united with other communities of interest. All of these above needs are best accomplished through the map released with the preliminary plan in June. I ask the Commission to adopt a map that closely resembles that initial plan. Residents of rural Colorado have unique interests and need representation in Congress whose constituency does not have divided priorities. Our voices deserve to be heard, undiluted by inclusion in a district with suburban and urban residents. Whether agriculture or energy production, public lands, water, natural resources, or cooperative businesses, most of our issues and needs in Congress differ from those of our Front Range urban and suburban friends and fellow Coloradans. We all care about education and transportation, but no rural county has (or will have) light rail, and no urban county will understand the needs of a small ranch operation. We deserve representation in Congress that isn't forced to choose between our needs and the issues that matter to suburbia. The June preliminary plan contains the best map for rural America and will ensure that our voice is heard through two distinct rural districts. Furthermore, if Teller, Park, Chaffee and Fremont counties are no longer going to be in the Fifth Congressional District, then they should be in the Third Congressional District with other communities of interest not lumped in with Jefferson County and other suburban counties with which they have nothing in common." Thank you for your consideration and time. Nancy Bachelder

### Judith Kula

Commission: both

Zip: 81621

Submitted: September 15, 2021

Comment:

Why does the Commission seem incapable of drawing a map that doesn't include some part of the I-25 corridor in almost every CD? We do not have anything in common with the I-25 Corridor or Boulder. Colorado is a lot more than the I-25 corridor. This Violates the most fundamental principle of congressional redistricting: that communities of interest have representation in our Congress. Give those areas on the Front Range their Congressional voices, and give a voice to the Western Slope by keeping all of the Western Slope in CD3. The Western Slope's vital relationship with water alone is enough to designate it as a community of interest bound by the shared responsibility of stewardship. However, the Western Slope also has commonalities regarding how the region uses water. The Western Slope's agricultural, industrial, and recreation economies rely on well-informed local representatives to protect the community's water at the state and federal levels. To split the Western Slope in any way would compromise the unity required to properly represent water interests in the region. There is also a clear divide between the Western Slope and front range communities, clearly designating western Colorado as a community with unique federal interests. Though many of our communities do not have the tax base of their front range counterparts, they still must provide the essential services of government: safe roads and bridges, law enforcement, public schools, and critical infrastructure with minimal resources. These challenges are not experienced by front range communities where virtually no federally owned lands exist. While federal lands are preserved for the benefit of all Americans, the day-to-day responsibilities of preservation fall upon those who live closest to those lands. These lands are managed for multiple uses – from livestock grazing to energy extraction to outdoor recreation. Over generations, communities on the Western Slope have worked with federal agencies to develop and demonstrate best practices for multi-use lands for the country and these uses are limited to county border. The Western Slope must be maintained as a result. Colorado has more than 24.4 million acres of forestland and many of these forests include the headwaters of rivers that provide reliable, affordable water supplies which are foundational to the environment, economy, and quality of life in rural Colorado. In fact, rangeland and forest are the predominant land uses in the Colorado Basin (85%), with forested land present throughout many parts of the basin. A substantial portion of the basin is comprised of federally owned land, with livestock, grazing, recreation, and timber harvesting as the predominant uses on those lands. A Colorado



Statewide Forest Resource Assessment identified 642 watersheds susceptible to damaging wildfire, and 371 forested watersheds with high to very high risk from post-fire erosion, many of these watersheds, encompassing about 9.4 million acres of spruce-fir, aspen and pine forests that contain critical infrastructure for municipal drinking water supplies., ALL of these forests reside west of the continental divide. The San Luis Valley has unique agriculture interests and should not be divided. This region should be kept whole and united with other communities of interest. All of these above needs are best accomplished through the map released with the preliminary plan in June. I ask the Commission to adopt a map that closely resembles that initial plan. Residents of rural Colorado have unique interests and need representation in Congress whose constituency does not have divided priorities. Our voices deserve to be heard, undiluted by inclusion in a district with suburban and urban residents. Whether agriculture or energy production, public lands, water, natural resources, or cooperative businesses, most of our issues and needs in Congress differ from those of our Front Range urban and suburban friends and fellow Coloradans. We all care about education and transportation, but no rural county has (or will have) light rail, and no urban county will understand the needs of a small ranch operation. We deserve representation in Congress that isn't forced to choose between our needs and the issues that matter to suburbia. The June preliminary plan contains the best map for rural America and will ensure that our voice is heard through two distinct rural districts. Furthermore, if Teller, Park, Chaffee and Fremont counties are no longer going to be in the Fifth Congressional District, then they should be in the Third Congressional District with other communities of interest not lumped in with Jefferson County and other suburban counties with which they have nothing in common. Unfortunately, the first Staff Plan map released on September 3rd ignores the needs of rural America by removing rural counties in the current Third Congressional District that include Moffat, Rio Blanco, Routt, Garfield, Jackson and Grand counties and lumping them in with Boulder and Larimer, two counties with which they have little to nothing in common. This drastic departure from the current Congressional Districts is a disservice to both the residents of the Second and Third Congressional Districts. CD3, as drawn in the preliminary plan released in June, made great improvements that unified communities of interest and shared public policy concerns. Tourism, education, public health, education, transportation, water and other mutual issues of concern for our residents were well represented on that map. I was excited about the possibility of a district that ensured the people of the Third District were well represented and connected. Unfortunately, the first staff plan released September 3rd decimates the rural voice in northwest Colorado and disregards the critical communities of interest that make up the fabric of western Colorado. These recent changes to the map ensure that residents on the other side of the mountains and in Denver who share little in common with us are responsible for making decisions on behalf of rural Coloradans. Whether you are living in Craig, Durango, or Yuma - these changes to the map do not allow our voice to be heard or our interests to be fairly represented. The Rocky Mountains create a natural boundary between the eastern and western parts of the state. The Western Slope has unique infrastructure, outdoor recreation and tourism challenges that unify our counties and communities of interest. Our infrastructure is not mainly centered around growing populations as it is in the front range, but around the mountain passes, rivers, and lands that make up the Western Slope. The heavy snow and other similar weather patterns in the west also connect the similar kinds of needs for roads, which vary from the eastern and front range part of the state. The economy, with regard to tourism and outdoor recreation, of the western slope contains almost all of the ski areas and encompasses what people think of when they think of Colorado: hiking, mountain biking, hunting, camping, fishing, skiing and snowmobiling. It is because of these reasons that I support the preliminary plan for CD-03 released in June. Whether we are speaking regarding shared interests such as our energy grid on the Western Slope, or our values at home, rural Coloradans on the Western Slope cannot be fairly represented without the region being kept intact. Keep the West Slope whole. The preliminary plan released on June 23rd is the fairest map that is consistent with the Congressional Constitutional language approved by voters. The Rocky Mountains provide the obvious divider between the western slope and front range communities. However, once Colorado's water basins and federal lands are taken into consideration, the east-west configuration seems to be the only way to accurately represent Colorado's population across the state. The Western Slope is responsible for the roughly 80% of water that leaves Colorado; this means that those of us who live in the Western Slope are responsible for maintaining the water basins. Water is often a major issue and it is important that we have one Congressman who is able to represent ALL of the water on the Western Slope. Additionally, federal lands comprise more than 55% of the land in western Colorado, which is in stark contrast to the front range. This necessitates the need for a single Congressman, and points to the reality that the daily responsibilities of upkeep for our federal lands are taken on by locals all across the Western Slope; we must be united to tackle these tasks. Please keep the Western Slope intact. As a long-term

resident of western Colorado, I always wonder how redistricting will affect our part of the state. The map released with the June 23 preliminary plan respected our way of life and the geographical areas connected to that. The Western Slope is united in many ways, the large amount of federal lands and tourism being some of the top ways. The front range communities steward different types of lands and engage in different kinds of economic activities than we do on the West Slope, both of which need accurate representation. The preliminary plan serves the West Slope best. I urge the Commission to adopt a map that mirrors that plan. The Western Slope is home to a majority of the state's forests and with the multitude of forest fires in the west slope over the last three decades, it is of utmost importance to keep the western portion of the state together so our representative can most effectively address this issue. Just over 55% of the western land in Colorado is federally-owned, so in order to get the management solutions we need for our forests on a federal level, we must keep the West Slope together. Two rural districts currently make up a large portion of the state, representing various issues, industries and communities that require specific representation. The eastern plains and San Luis Valley are the home to many people that work in agriculture. We need to make sure the agriculture industry maintains a strong voice for these communities of interest at the federal level. Meanwhile, the Western slope is home to significant energy, tourism and public land communities. Ensuring two rural districts that include all communities of interest, as drawn in the map for the June preliminary plan, will ensure Colorado's urban and rural communities are best served by all of our Representatives. The ski industry is one of the driving forces for tourism in Colorado and unites the western part of our state, as almost all ski resorts are west of the Continental Divide. It makes the most sense to keep all ski areas together in one district. Additionally, the mountainous area in the West that allows for such great skiing also creates unique challenges for infrastructure. While the front range can align infrastructure changes with growing populations, we in the West have to consider geography and weather in addition to population density. Keeping the Western Slope whole will put a Congressman in the best position to improve our infrastructure and best serve our ski communities. Colorado generates over 95-million-acre feet of water annually, and about 10-million-acre feet leave the state through its borders. Of the 10-million-acre feet that leave Colorado, 81%, or 8.1-million-acre feet, exit through the Western Slope. This means that the Western Slope is responsible for stewarding a large portion of Colorado's water, which will be made far more difficult if the Western Slope is split up. Communities like Moffat, Rio Blanco and Garfield will be ignored by their Representative and not receive the attention they deserve, particularly when it comes to water, if they are lumped into the Second Congressional District and removed from the Third. Please keep the Western Slope whole so our water-related issues can best be addressed in Congress.

**Carl Thomas**

Commission: congressional

Zip: 81621

Submitted: September 09, 2021

Comment:

I like the new maps better. I feel that Pitkin County is better represented with the current maps. We have more in common with the counties we are now included in than we did with the entire western slope. We are now with more than half the ski counties in the state and also have some southern aspects as well.

**Valerie Braun**

Commission: both

Zip: 81621

Submitted: September 08, 2021

Comment:

I was very disappointed with the proposed districting map. It is critical for the rural and mountain areas of Western Colorado feel that they have a voice in Congress and in the State Legislature. By carving up the Western Slope you are denying a united voice on the important issues facing Colorado, especially with regard to water rights, tourism, conservation and forest management, and uncontrolled growth. This map looks VERY political rather than working toward a map that best represents the unique issues facing areas of the State. Please do not fall for the trick of just looking at population areas. Boulder has absolutely nothing in common with the Western Slope. It is a lovely college town with the typical concerns and political persuasions. Lump that area into other districts with urban issues and let their representatives work for them. We need to feel we have a fair chance at representation that reflects our values, concerns, and the dramatic issues facing some of the most important land in state. Thank you for the opportunity to comment.

**L. M. Simmons**

Commission: congressional

Zip: 81621

Submitted: August 14, 2021

Comment:

Attached is a copy of my presentation to the Commission on 07/31/21

[Submit Public Comment](#)

- [1](#)
- [2](#)
- [Next ›](#)
- [Last »](#)

Colorado Independent Redistricting Commissions

[Contact Us](#)

[Commission Staff](#)

[Sign Up for Our Mailing List](#)

[Twitter](#)

[Facebook](#)

[Instagram](#)

General Information

[Find Your US Representative](#)

[Find Your State Legislator](#)

[US Census Bureau](#)

[IT Sign In](#)

[Skip to main content](#)



Colorado Independent Redistricting Commissions

- [Commissions](#)  
[Congressional Redistricting](#) [Legislative Redistricting](#) [Considering Maps, Amendments, and Additional Plans](#) [Commissioner Selection Process](#) [Historical Reports of the Colorado Reapportionment Commission](#)
- [Meetings](#)  
[Upcoming Meetings](#) [Meeting Materials - Congressional](#) [Meeting Materials - Legislative](#) [Meeting Archive](#)
- [Public Engagement](#)  
[Press Opportunities for Public Engagement](#) [View Written Public Comments](#) [Submit Public Comment](#)  
[Enviar Comentarios Públicos](#)
- [Legal Requirements](#)  
[Colorado Redistricting Laws](#) [Commission Rules](#) [Commission Policies and Guidelines](#) [Legal and Ethical Obligations of Commissioners](#)
- [Maps](#)  
[2021 Redistricting Maps](#) [2011 Redistricting Maps](#) [2001 Redistricting Maps](#) [Data](#) [Redistricting Online Portal](#)
- [FAQ](#)

## Public Comments

Attachments and public comments submitted by email can be viewed [here](#).

Filter or Sort Public Comments

Commission type

Comment contains

Name contains

Zip starts with

**Tambi Katieb**

Commission: both

Zip: 81631

Submitted: September 28, 2021

Comment:

Dear Commissioners, As an independent voter, I strongly urge you to keep our Eagle County community whole and not include us in CD2 with Boulder and the I-25 corridor. We do not have anything in common with the I-25 Corridor or Boulder. Colorado is a lot more than the I-25 corridor. This Violates the most fundamental principle of congressional redistricting: that communities of interest have representation in our Congress. Give those areas on the Front Range their Congressional voices, and give a voice to the Western Slope by keeping all of the Western Slope in CD3. I will not repeat everything I've already submitted, however, anyone thinking that the Towns of Eagle and Gypsum have more in common with Boulder needs to get their heads checked. This is illogical, immoral and an extreme disservice to myself and my neighbors and smacks of 'behind the scenes' work by lobbyists rather than preserving the integrity of common interest communities that are compact and intact. The only map released thus far that does that for Eagle County is the preliminary plan released on June 23rd. This map is the only one that seems to me consistent with the congressional constitutional criteria approved by VOTERS. Please, use some common sense and adopt a map that mirrors that plan !!! Best, Tambi Katieb Eagle CO

**Kim Dirker**

Commission: legislative

Zip: 81631

Submitted: September 28, 2021

Comment:

Eagle county needs to stay in CD3 district and not split with CD2. Our district in Eagle has totally different interests and requirements than Boulder. This split would be totally political and not effective.

**Lori Diversey**

Commission: both

Zip: 81631

Submitted: September 27, 2021

Comment:

Keep Communities whole. Keep Eagle County D3 with the Western Slope. Why does the Commission seem incapable of drawing a map that doesn't include some part of the I-25 corridor in almost every CD? We do not have anything in common with the I-25 Corridor or Boulder. Colorado is a lot more than the I-25 corridor. This Violates the most fundamental principle of congressional redistricting: that communities of interest have representation in our Congress. Give those areas on the Front Range their Congressional voices, and give a voice to the Western Slope by keeping all of the Western Slope in CD3. The Western Slope's vital relationship with water alone is enough to designate it as a community of interest bound by the shared responsibility of stewardship. However, the Western Slope also has commonalities regarding how the region uses water. The Western Slope's agricultural, industrial, and recreation economies rely on well-informed local representatives to protect the community's water at the state and federal levels. To split the Western Slope in any way would compromise the unity required to properly represent water interests in the region. There is also a clear divide between the Western Slope and front range communities, clearly designating western Colorado as a community with unique federal interests. Though many of our communities do not have the tax base of their front range counterparts, they still must provide the essential services of government: safe roads and bridges, law enforcement, public schools, and critical infrastructure with minimal resources. These challenges are not experienced by front range communities where virtually no federally owned lands exist. While federal lands are preserved for the benefit of all Americans, the day-to-day responsibilities of preservation fall upon those who

live closest to those lands. These lands are managed for multiple uses – from livestock grazing to energy extraction to outdoor recreation. Over generations, communities on the Western Slope have worked with federal agencies to develop and demonstrate best practices for multi-use lands for the country and these uses are limited to county border. The Western Slope must be maintained as a result. Colorado has more than 24.4 million acres of forestland and many of these forests include the headwaters of rivers that provide reliable, affordable water supplies which are foundational to the environment, economy, and quality of life in rural Colorado. In fact, rangeland and forest are the predominant land uses in the Colorado Basin (85%), with forested land present throughout many parts of the basin. A substantial portion of the basin is comprised of federally owned land, with livestock, grazing, recreation, and timber harvesting as the predominant uses on those lands. A Colorado Statewide Forest Resource Assessment identified 642 watersheds susceptible to damaging wildfire, and 371 forested watersheds with high to very high risk from post-fire erosion, many of these watersheds, encompassing about 9.4 million acres of spruce-fir, aspen and pine forests that contain critical infrastructure for municipal drinking water supplies., ALL of these forests reside west of the continental divide. The San Luis Valley has unique agriculture interests and should not be divided. This region should be kept whole and united with other communities of interest. All of these above needs are best accomplished through the map released with the preliminary plan in June. I ask the Commission to adopt a map that closely resembles that initial plan. Residents of rural Colorado have unique interests and need representation in Congress whose constituency does not have divided priorities. Our voices deserve to be heard, undiluted by inclusion in a district with suburban and urban residents. Whether agriculture or energy production, public lands, water, natural resources, or cooperative businesses, most of our issues and needs in Congress differ from those of our Front Range urban and suburban friends and fellow Coloradans. We all care about education and transportation, but no rural county has (or will have) light rail, and no urban county will understand the needs of a small ranch operation. We deserve representation in Congress that isn't forced to choose between our needs and the issues that matter to suburbia. The June preliminary plan contains the best map for rural America and will ensure that our voice is heard through two distinct rural districts. Furthermore, if Teller, Park, Chaffee and Fremont counties are no longer going to be in the Fifth Congressional District, then they should be in the Third Congressional District with other communities of interest not lumped in with Jefferson County and other suburban counties with which they have nothing in common. Unfortunately, the first Staff Plan map released on September 3rd ignores the needs of rural America by removing rural counties in the current Third Congressional District that include Moffat, Rio Blanco, Routt, Garfield, Jackson and Grand counties and lumping them in with Boulder and Larimer, two counties with which they have little to nothing in common. This drastic departure from the current Congressional Districts is a disservice to both the residents of the Second and Third Congressional Districts. CD3, as drawn in the preliminary plan released in June, made great improvements that unified communities of interest and shared public policy concerns. Tourism, education, public health, education, transportation, water and other mutual issues of concern for our residents were well represented on that map. I was excited about the possibility of a district that ensured the people of the Third District were well represented and connected. Unfortunately, the first staff plan released September 3rd decimates the rural voice in northwest Colorado and disregards the critical communities of interest that make up the fabric of western Colorado. These recent changes to the map ensure that residents on the other side of the mountains and in Denver who share little in common with us are responsible for making decisions on behalf of rural Coloradans. Whether you are living in Craig, Durango, or Yuma - these changes to the map do not allow our voice to be heard or our interests to be fairly represented. The Rocky Mountains create a natural boundary between the eastern and western parts of the state. The Western Slope has unique infrastructure, outdoor recreation and tourism challenges that unify our counties and communities of interest. Our infrastructure is not mainly centered around growing populations as it is in the front range, but around the mountain passes, rivers, and lands that make up the Western Slope. The heavy snow and other similar weather patterns in the west also connect the similar kinds of needs for roads, which vary from the eastern and front range part of the state. The economy, with regard to tourism and outdoor recreation, of the western slope contains almost all of the ski areas and encompasses what people think of when they think of Colorado: hiking, mountain biking, hunting, camping, fishing, skiing and snowmobiling. It is because of these reasons that I support the preliminary plan for CD-03 released in June. Whether we are speaking regarding shared interests such as our energy grid on the Western Slope, or our values at home, rural Coloradans on the Western Slope cannot be fairly represented without the region being kept intact. Keep the West Slope whole. The preliminary plan released on June 23rd is the fairest map that is consistent with the Congressional Constitutional language approved by voters. The Rocky Mountains provide the obvious divider between the

western slope and front range communities. However, once Colorado's water basins and federal lands are taken into consideration, the east-west configuration seems to be the only way to accurately represent Colorado's population across the state. The Western Slope is responsible for the roughly 80% of water that leaves Colorado; this means that those of us who live in the Western Slope are responsible for maintaining the water basins. Water is often a major issue and it is important that we have one Congressman who is able to represent ALL of the water on the Western Slope. Additionally, federal lands comprise more than 55% of the land in western Colorado, which is in stark contrast to the front range. This necessitates the need for a single Congressman, and points to the reality that the daily responsibilities of upkeep for our federal lands are taken on by locals all across the Western Slope; we must be united to tackle these tasks. Please keep the Western Slope intact. As a long-term resident of western Colorado, I always wonder how redistricting will affect our part of the state. The map released with the June 23 preliminary plan respected our way of life and the geographical areas connected to that. The Western Slope is united in many ways, the large amount of federal lands and tourism being some of the top ways. The front range communities steward different types of lands and engage in different kinds of economic activities than we do on the West Slope, both of which need accurate representation. The preliminary plan serves the West Slope best. I urge the Commission to adopt a map that mirrors that plan. The Western Slope is home to a majority of the state's forests and with the multitude of forest fires in the west slope over the last three decades, it is of utmost importance to keep the western portion of the state together so our representative can most effectively address this issue. Just over 55% of the western land in Colorado is federally-owned, so in order to get the management solutions we need for our forests on a federal level, we must keep the West Slope together. Two rural districts currently make up a large portion of the state, representing various issues, industries and communities that require specific representation. The eastern plains and San Luis Valley are the home to many people that work in agriculture. We need to make sure the agriculture industry maintains a strong voice for these communities of interest at the federal level. Meanwhile, the Western slope is home to significant energy, tourism and public land communities. Ensuring two rural districts that include all communities of interest, as drawn in the map for the June preliminary plan, will ensure Colorado's urban and rural communities are best served by all of our Representatives. The ski industry is one of the driving forces for tourism in Colorado and unites the western part of our state, as almost all ski resorts are west of the Continental Divide. It makes the most sense to keep all ski areas together in one district. Additionally, the mountainous area in the West that allows for such great skiing also creates unique challenges for infrastructure. While the front range can align infrastructure changes with growing populations, we in the West have to consider geography and weather in addition to population density. Keeping the Western Slope whole will put a Congressman in the best position to improve our infrastructure and best serve our ski communities. Colorado generates over 95-million-acre feet of water annually, and about 10-million-acre feet leave the state through its borders. Of the 10-million-acre feet that leave Colorado, 81%, or 8.1-million-acre feet, exit through the Western Slope. This means that the Western Slope is responsible for stewarding a large portion of Colorado's water, which will be made far more difficult if the Western Slope is split up. Communities like Moffat, Rio Blanco and Garfield will be ignored by their Representative and not receive the attention they deserve, particularly when it comes to water, if they are lumped into the Second Congressional District and removed from the Third. Please keep the Western Slope whole so our water-related issues can best be addressed in Congress.

## Ann Overlease

Commission: both

Zip: 81631

Submitted: September 26, 2021

Comment:

Having lived in Eagle County for 41 years we must state how different this area is to the eastern part of the state. When we came here it was more rural, but it still holds that trait with hunting, fishing, livestock raising & raising hay to be the livelihood of many. We as a family raised 4H animals and harvested hay on our small field. We don't connect with big city ideas and their pace of life. We want a more simple quiet life with open space, less

people, less government, less restrictions on us and our families. Keep Eagle County with the western part of the state. **Don't divide us geographically** making us part of big city ideas, & government. We chose to leave urban cities to live a more peaceful life.

**Michael Dority**

Commission: congressional

Zip: 81631

Submitted: September 26, 2021

Comment:

Eagle should remain in CD3.

**Traci Bovino**

Commission: congressional

Zip: 81631

Submitted: September 25, 2021

Comment:

I feel strongly that the interests of the mountain communities do not align with the rifle/ grand junction areas of Colorado. I support the proposal which moves eagle county into the Boulder district which I do feel more closely aligns with our values and interests. Thank you, Traci

**Elizabeth Gauthier**

Commission: congressional

Zip: 81631

Submitted: September 24, 2021

Comment:

Please redistrict with the Schuster model which keeps my home in Eagle County together with like counties and communities and keeps our district competitive. The Schuster model keeps communities eith sgared interests together while also keeping them competitive with Republican vs Democrat leanings. It's a much better solution than the other plans! Thank you.

**Teak Simonton**

Commission: congressional

Zip: 81631

Submitted: September 23, 2021

Comment:



I understand what you were trying to do when you included more of south western Eagle County in CD3, however, you've managed to split neighborhoods in the Town of Eagle area - Upper Kaibab, only accessible through the town of Eagle, not part of the Roaring Fork Valley or even connected to it by a paved road, is not included in CD2, but is added to CD3. Also, it looks like there are a few random addresses along Highway Six between Eagle and Gypsum that would not be in CD2, but pulled into CD3. Again, these random and small number of homes would have to be included in a precinct that was part of the Roaring Fork valley (Basalt area) in order to mask their votes when reporting by precinct - the clerk and recorder could not create a separate precinct for less than 25 people in other words. These homes are in no way part of or connected to the Roaring Fork valley. I would think changing these two boundaries, to include this small number of people to CD2 would not skew your numbers much and would make much better sense for the greater town of Eagle area.

**Paul**

Commission: congressional

Zip: 81631

Submitted: September 23, 2021

Comment:

Keep Eagle county in CD3. We have little in common with Boulder county and should remain in CD2. Eagle county has more common interests associated with the western slope counties. Our voices and opinions will be silenced If we are lumped in with the more populous Boulder county.

**Katherine Delanoy**

Commission: congressional

Zip: 81631

Submitted: September 22, 2021

Comment:

I like the Schuster map best. It keeps Eagle together with towns it should be with. It keeps the Roaring Fork Valley together. My daughter in the San Luis Valley wants to keep it with the Pueblo area. Please use the Schuster map.

[Submit Public Comment](#)

- [1](#)
- [2](#)
- [3](#)
- [4](#)
- [5](#)
- [Next »](#)
- [Last »](#)

Colorado Independent Redistricting Commissions

[Contact Us](#)

[Commission Staff](#)

[Sign Up for Our Mailing List](#)

[Twitter](#)

[Facebook](#)

[Instagram](#)

**General Information**

[Find Your US Representative](#)

[Find Your State Legislator](#)

[US Census Bureau](#)

[IT Sign In](#)

RETRIEVED FROM DEMOCRACYDOCKET.COM

[Skip to main content](#)



Colorado Independent Redistricting Commissions

- [Commissions](#)  
[Congressional Redistricting](#) [Legislative Redistricting](#) [Considering Maps, Amendments, and Additional Plans](#) [Commissioner Selection Process](#) [Historical Reports of the Colorado Reapportionment Commission](#)
- [Meetings](#)  
[Upcoming Meetings](#) [Meeting Materials - Congressional](#) [Meeting Materials - Legislative](#) [Meeting Archive](#)
- [Public Engagement](#)  
[Press Opportunities for Public Engagement](#) [View Written Public Comments](#) [Submit Public Comment](#)  
[Enviar Comentarios Públicos](#)
- [Legal Requirements](#)  
[Colorado Redistricting Laws](#) [Commission Rules](#) [Commission Policies and Guidelines](#) [Legal and Ethical Obligations of Commissioners](#)
- [Maps](#)  
[2021 Redistricting Maps](#) [2011 Redistricting Maps](#) [2001 Redistricting Maps](#) [Data](#) [Redistricting Online Portal](#)
- [FAQ](#)

## Public Comments

Attachments and public comments submitted by email can be viewed [here](#).

Filter or Sort Public Comments

Commission type

Comment contains

Name contains

Zip starts with

**Susanne Huxford**

Commission: congressional

Zip: 81632

Submitted: September 28, 2021

Comment:

Thank you so much for giving us a voice and taking the time to listen to us. The September 23rd, Third Staff Plan Map is genius. Great job! This map TICKS the boxes of many of the so desperately needed issues; mainly it accounts for two rural districts (CHECK #1). The Constitution requires the map to have equal populations, this map does (CHECK #2). The map allows the Congressional districts to not be broken up (CHECK #3) and at the same time ensures the Congressional districts are well represented and not dominated by Denver (CHECK #4). Very importantly the communities of interest, social and economic, are grouped accordingly (CHECK #5). Lastly, the number of politically competitive districts are at a maximum (CHECK #6). Superbly done, Commissioners!

**Elaine Edinburg**

Commission: congressional

Zip: 81632

Submitted: September 26, 2021

Comment:

We have lived in Edwards, Colorado full time for 21 years and 4 years part time after moving from Denver. We are strongly opposing to this redistricting. My husband, Dr. Joel Kaye, lived in Boulder county for a few years before our move to Eagle County. These 2 counties are very different and under no circumstances should they be combined. PLEASE PLEASE PLEASE DO NOT APPROVE THIS REDISTRICTING PLAN.

**Heather Lawdermilk**

Commission: both

Zip: 81632

Submitted: September 26, 2021

Comment:

Do not split eagle county and district part with a metro area. Keep eagle county while. Western slope rural resort areas are unique and need a representative voice not one blended with an urban I25 corridor community.

**Barbara DeLuca**

Commission: both

Zip: 81632

Submitted: September 26, 2021

Comment:

Dear Redistricting Committee, This has been a quite frustrating period of time, trying to have you see the need for Eagle County to remain in district 3. It is imperative to best outcome, as a ski and resort community, on the western slope, to remain in tandem with other mountain resort communities of similar life styles and value. Boulder and most other towns in district 2 are completely out of focus when it comes to our needs and priorities. Our ability to attract and sustain visitors is based on a lifestyle perception and an aesthetic presentation that is in no way congruent with other communities in district 2. For the preservation of our many attributes as an

attractive destination resort in summer and winter, I must demand you look at this challenge you are putting upon us if you don't allow all of Eagle County to be in district 3. Thank you, Barbara DeLuca

**Robert DeLuca**

Commission: both

Zip: 81632

Submitted: September 26, 2021

Comment:

Redistricting Committee, I am very frustrated to see that you are presently not having all of Eagle County in district 3. We need to be grouped with many other western slope ski and resort communities. Our commonalities are closely related in our economies, our land usage, our natural resource usages and life styles. We have very little congruence's with Boulder and the rest of the towns in district 2. I strongly urge you not to force us into a district that will either dilute or eliminate our voices for which we can represent our more common communities together. We are significant contributors to the state's economy and lifestyle desirability which can only be sustained and built upon, by the visions of our local citizens. We require our own voices to be heard! Thank you, Robert DeLuca

**Valerie Weber**

Commission: both

Zip: 81632

Submitted: September 25, 2021

Comment:

Eagle County MUST stay CD3. We are NOT a city like Boulder. Different things concern rural/ resort areas of CO than cities!

**Bruce Baumgartner**

Commission: congressional

Zip: 81632

Submitted: September 25, 2021

Comment:

I like the Schuster map; 1. It is the most competitive 2. It keeps communities of interest together. Adopt it.

**Laurie Kleisinger**

Commission: congressional

Zip: 81632

Submitted: September 22, 2021

Comment:

I live in Eagle County and find the Schuster map to be the best fit for us. We are with our western and southern neighbors which include other ski resort areas as well as rural areas. In the past., and in other proposed maps, our liberal leaning county has been drowned out by uncompetitive conservative areas so much so that we don't even have a chance of our area having actual representative representation in the halls of Congress. Thank you for this chance to voice our opinion.

**Jennifer A Woolley**

Commission: congressional

Zip: 81632

Submitted: September 20, 2021

Comment:

Dear Commission, I am very disappointed in the latest rendition of the redistricting map which moved Eagle County out of CD3 and into CD2 with Boulder and the front range. We desire Eagle County to remain in CD3. We have nothing in common with the front range or the urban communities. We have commonalities with western Colorado; we are rural, ranching and resorts and are west of the continental divide. Even our schools are designated rural. Our water flows west; we have related water concerns. We need representation by a person is concerned about and will fight for our rural wester needs. We do not want to be represented by someone who has split their alliance between two non-related communities (urban and rural). Additionally, It appears that a very tiny portion of Eagle County remained in CD3. This was not obvious at all. This represents approximately 20% of our county. We really need to stay whole for unity and our common interests. Please move all Eagle into CD3. Additionally, why is it that regardless of the map version it appears that every district has a portion of the I25 corridor. Can this just stop? Not all districts have any relation to the folks that that live along the I25 corridor. They have different needs. Let them and us be represented appropriately. In closing this applies to both Routt and Eagle County. Both counties need to be moved into CD3 so that we can remain with like minded communities, resources, interests, and be represented by someone committed to the rural. You can accomplish this by removing Pueblo, Otero and Crowley. These counties have more in common with Eastern Colorado. Please keep the western slope whole. The first map presented June still appears to be the best map thus far. Jennifer Woolley Eagle County

**Catherine Gassman**

Commission: congressional

Zip: 81632

Submitted: September 19, 2021

Comment:

Commissioners, Thank you for your public service and by participating in the work being done by this important committee. I support the most recent version of the congressional map and the district lines that have been drawn for CD 2 and 3 – the second staff-drawn map. This map now has a central mountain region that includes Colorado's largest ski communities. I favor putting Eagle, Summit and Routt counties together as they have many public policy concerns in common, including transportation, affordable housing, and preservation of pubic lands for outdoor recreation Eagle County has more compatibility with north-central counties like Grand, Larimer and Boulder than with southeastern counties like Crowley, Otero and even Pueblo. Likewise, Eagle County little shared interest with western-most counties like Mesa, Delta and Montrose whose commissioners

advocate for extraction of fossil fuels over the conservation of our public lands which are critical to the economic future of our county. I hope you will consider keeping CD 2 and CD 3 as shown in the second staff map. Colorado's ski resorts need a single voice in Congress. Sincerely, Cass Gassman Edwards, CO

[Submit Public Comment](#)

- [1](#)
- [2](#)
- [3](#)
- [4](#)
- [Next ›](#)
- [Last »](#)

**Colorado Independent Redistricting Commissions**

[Contact Us](#)

[Commission Staff](#)

[Sign Up for Our Mailing List](#)

[Twitter](#)

[Facebook](#)

[Instagram](#)

**General Information**

[Find Your US Representative](#)

[Find Your State Legislator](#)

[US Census Bureau](#)

[IT Sign In](#)

RETRIEVED FROM DEMOCRACYDOCKET.COM

[Skip to main content](#)



Colorado Independent Redistricting Commissions

- [Commissions](#)  
[Congressional Redistricting](#) [Legislative Redistricting](#) [Considering Maps, Amendments, and Additional Plans](#) [Commissioner Selection Process](#) [Historical Reports of the Colorado Reapportionment Commission](#)
- [Meetings](#)  
[Upcoming Meetings](#) [Meeting Materials - Congressional](#) [Meeting Materials - Legislative](#) [Meeting Archive](#)
- [Public Engagement](#)  
[Press Opportunities for Public Engagement](#) [View Written Public Comments](#) [Submit Public Comment](#) [Enviar Comentarios Públicos](#)
- [Legal Requirements](#)  
[Colorado Redistricting Laws](#) [Commission Rules](#) [Commission Policies and Guidelines](#) [Legal and Ethical Obligations of Commissioners](#)
- [Maps](#)  
[2021 Redistricting Maps](#) [2011 Redistricting Maps](#) [2001 Redistricting Maps](#) [Data](#) [Redistricting Online Portal](#)
- [FAQ](#)

## Public Comments

Attachments and public comments submitted by email can be viewed [here](#).

Filter or Sort Public Comments

Commission type

Comment contains

Name contains

Zip starts with

**Bonnie marlette**

Commission: both

Zip: 81637

Submitted: September 28, 2021

Comment:



Please keep Eagle county CD3 nothing in common with Boulder

**Michelle Martinez**

Commission: congressional

Zip: 81637

Submitted: September 28, 2021

Comment:

Please keep Eagle County in CD3. We have nothing in common with Boulder.

**Corey Werner**

Commission: both

Zip: 81637

Submitted: September 27, 2021

Comment:

Eagle county has nothing in common with Boulder and why does the Commission seem incapable of drawing a map that doesn't include some part of the I-25 corridor in almost every CD? We do not have anything in common with the I-25 Corridor or Boulder. Colorado is a lot more than the I-25 corridor. This Violates the most fundamental principle of congressional redistricting: that communities of interest have representation in our Congress. Give those areas on the Front Range their Congressional voices, and give a voice to the Western Slope by keeping all of the Western Slope in CD3.

**Seth Levy**

Commission: congressional

Zip: 81637

Submitted: September 25, 2021

Comment:

It is not necessary to split rural counties. Please keep Eagle county in one congressional district. Splitting up the county creates confusion and costs additional money.

**Stephen Monroe**

Commission: congressional

Zip: 81637

Submitted: September 25, 2021

Comment:

Please let Western Colorado have its own district. We don't need every district to touch the I25 corridor. My town of Gypsum has little in common with Boulder, please put us back into District 3.

**Beric Christiansen**

Commission: congressional

Zip: 81637

Submitted: September 16, 2021

Comment:

My wife and I want Eagle county to remain in CD 3. The current proposal has us in CD 2 with Boulder. We have virtually nothing in common with Boulder so why put us with a county over 100 miles away? We are on the west side of the mountains so are more aligned with that area of the state. boulder can align with the Denver-Loveland-Ft. Collins- Aurora area where it has close proximity. Keep Eagle county in CD-3.

**David Nordin**

Commission: both

Zip: 81637

Submitted: September 16, 2021

Comment:

Please leave Eagle County in CD3.

**Greg Bush**

Commission: congressional

Zip: 81637

Submitted: September 16, 2021

Comment:

I am not in agreement with the new lines drawn for the congressional districts. I believe that the Western Slope should have a voice in representation without compromise from front range interests. We are geographically and life-style different from the Front Range and deserve representation from like-minded people who should not be chosen or sourced from the front range communities. I am opposed to the current districting and would like to return to the previous map released in June.

**Mark Vodopich**

Commission: both

Zip: 81637

Submitted: September 15, 2021

RETRIEVED FROM DEMOCRACYDOCKET.COM

**Comment:**

It makes no sense to group Eagle County with Boulder. We are in entirely different areas and have very different interests. Boulder is notoriously left leaning and has a much larger population than Eagle County. Grouping Eagle County with Boulder County guarantees that the residents of Eagle County will have little say in whatever happens after this combination, if it occurs. DO NOT COMBINE EAGLE COUNTY WITH BOULDER COUNTY! Is that simple enough?

**Melanie Stalzer**

Commission: congressional

Zip: 81637

Submitted: September 15, 2021

**Comment:**

Please leave CD2 as is. Rural Colorado needs a voice!

[Submit Public Comment](#)

- [1](#)
- [2](#)
- [Next ›](#)
- [Last »](#)

**Colorado Independent Redistricting Commissions**[Contact Us](#)[Commission Staff](#)[Sign Up for Our Mailing List](#)[Twitter](#)[Facebook](#)[Instagram](#)**General Information**[Find Your US Representative](#)[Find Your State Legislator](#)[US Census Bureau](#)[IT Sign In](#)

RETRIEVED FROM DEMOCRACYDOCKET.COM

[Skip to main content](#)



Colorado Independent Redistricting Commissions

- [Commissions](#)  
[Congressional Redistricting](#) [Legislative Redistricting](#) [Considering Maps, Amendments, and Additional Plans](#) [Commissioner Selection Process](#) [Historical Reports of the Colorado Reapportionment Commission](#)
- [Meetings](#)  
[Upcoming Meetings](#) [Meeting Materials - Congressional](#) [Meeting Materials - Legislative](#) [Meeting Archive](#)
- [Public Engagement](#)  
[Press Opportunities for Public Engagement](#) [View Written Public Comments](#) [Submit Public Comment](#) [Enviar Comentarios Públicos](#)
- [Legal Requirements](#)  
[Colorado Redistricting Laws](#) [Commission Rules](#) [Commission Policies and Guidelines](#) [Legal and Ethical Obligations of Commissioners](#)
- [Maps](#)  
[2021 Redistricting Maps](#) [2011 Redistricting Maps](#) [2001 Redistricting Maps](#) [Data](#) [Redistricting Online Portal](#)
- [FAQ](#)

## Public Comments

Attachments and public comments submitted by email can be viewed [here](#).

Filter or Sort Public Comments

Commission type

Comment contains

Name contains

Zip starts with

**Susan Rychel**

Commission: both

Zip: 81658

Submitted: September 27, 2021

Comment:

Keep communities cohesive. May Eagle County and the Western Slope remain whole. LEAVE EAGLE COUNTY IN CD 3.

**Mark goodban**

Commission: both

Zip: 81658

Submitted: September 16, 2021

Comment:

Boulder county is a county so why do they halve their hands in all thee districts. Please do not californicate my beautiful state. I've lived in vail for 32 years and all I've seen is that you continue to place the city like boulder into the farmers and ranchers or the small towns that hate cities. It's like you just don't get it. Or maybe your to much of a commie 🙄

**Heather Lemon**

Commission: both

Zip: 81658

Submitted: September 15, 2021

Comment:

Eagle County should stay with the Western communities in CD 2 with out being outvoted by cities who have very little in common with us. We have ranches that have specific issues that big cities don't face. Putting us with Boulder takes away any influence we may have and weakens our positions. This past few years have been great since we have ranches etc that make us more similar to towns in the West than cities in the East. Please keep us with our brothers and sisters that need our support

[Submit Public Comment](#)

Colorado Independent Redistricting Commissions

[Contact Us](#)

[Commission Staff](#)

[Sign Up for Our Mailing List](#)

[Twitter](#)

[Facebook](#)

[Instagram](#)

General Information

[Find Your US Representative](#)

[Find Your State Legislator](#)

[US Census Bureau](#)

[IT Sign In](#)

[Skip to main content](#)



Colorado Independent Redistricting Commissions

- [Commissions](#)  
[Congressional Redistricting](#) [Legislative Redistricting](#) [Considering Maps, Amendments, and Additional Plans](#) [Commissioner Selection Process](#) [Historical Reports of the Colorado Reapportionment Commission](#)
- [Meetings](#)  
[Upcoming Meetings](#) [Meeting Materials - Congressional](#) [Meeting Materials - Legislative](#) [Meeting Archive](#)
- [Public Engagement](#)  
[Press Opportunities for Public Engagement](#) [View Written Public Comments](#) [Submit Public Comment](#) [Enviar Comentarios Públicos](#)
- [Legal Requirements](#)  
[Colorado Redistricting Laws](#) [Commission Rules](#) [Commission Policies and Guidelines](#) [Legal and Ethical Obligations of Commissioners](#)
- [Maps](#)  
[2021 Redistricting Maps](#) [2011 Redistricting Maps](#) [2001 Redistricting Maps](#) [Data](#) [Redistricting Online Portal](#)
- [FAQ](#)

## Public Comments

Attachments and public comments submitted by email can be viewed [here](#).

Filter or Sort Public Comments

Commission type

Comment contains

Name contains

Zip starts with

**Lars Burghardt**

Commission: congressional

Zip: 81657

Submitted: September 28, 2021

Comment:

Why on earth would Eagle county be seperated and put in two different congressional districts?! Further more, mountain communities should be together in one CD seperated from Boulder and the I-25 corridor. We in the mountains have different economies, different concerns and different lifestyles and would therefore would like our on CD!! We do not want to be watered down the more populated I-25 corridor! Our congressional district should include only mountain communitites, the area is large enough as the first map showed! Of course our CD can contain mountain communities on both sides of the continental divide. Thank you for your consideration.

**kaye ferry**

Commission: congressional

Zip: 81657

Submitted: September 26, 2021

Comment:

We spent 20 years trying to extricate Eagle County from CD2. We succeeded in getting the western portion in CD3 after the last redistricting. Now you propose putting us back and we DO NOT want to go. Keep us joined with counties that share our social issues, economic similarities and environmental needs. Split some other county if you must. We've served our time split between 2 districts. It's some other county's turn. We have nothing, zero, nada in common with Boulder or Larimer counties. We need to stay with the Western slope where we share water issues, resort challenges to say nothing of the I70 nightmare.

**Lars Burghardt**

Commission: congressional

Zip: 81657

Submitted: September 17, 2021

Comment:

Funny, I was born in Boulder and after College in the Springs I moved to Vail. Boulder and the Front Range are fundamentally different! Economy, water, lifestyle, politics, rural or not rural, tourism, federal lands, and nature to name just a few important issues where the regions differ. I want to finally get out of CD2 with Boulder! The mountains, western slope nor the eastern slope should ever be in a district with the I-25 corridor.

**kaye ferry**

Commission: congressional

Zip: 81657

Submitted: September 16, 2021

Comment:

We spent 20 years trying to extricate Eagle County from CD2. We succeeded in getting the western portion in CD3 after the last redistricting. Now you propose putting us back and we DO NOT want to go. We have nothing, zero, nada in common with Boulder or Larimer counties. We need to stay with the Western slope where we share water issues, resort challenges to say nothing of the I70 nightmare. Keep us joined with counties that share our social issues, economic similarities and environmental needs.

**Gussie Ross**

Commission: congressional

Zip: 81657

Submitted: September 16, 2021

Comment:

I want to see Western slope counties stay as one district... it is not fair to put our low population counties with Boulder which will always dictate Who is elected. Please keep mountain communities together so there so we can have a voice. Gussie Ross. Resident Eagle County 45 years.

**Bridget Russell**

Commission: both

Zip: 81657

Submitted: September 16, 2021

Comment:

Eagle County has absolutely nothing in common with Summit County or Boulder or elsewhere and is exactly fine where it is in CD3. 1. Why does the Commission seem incapable of drawing a map that doesn't include some part of the I-25 corridor in almost every CD? We do not have anything in common with the I-25 Corridor or Boulder. Colorado is a lot more than the I-25 corridor. This Violates the most fundamental principle of congressional redistricting: that communities of interest have representation in our Congress. Give those areas on the Front Range their Congressional voices, and give a voice to the Western Slope by keeping all of the Western Slope in CD3. 2. The Western Slope's vital relationship with water alone is enough to designate it as a community of interest bound by the shared responsibility of stewardship. However, the Western Slope also has commonalities regarding how the region uses water. The Western Slope's agricultural, industrial, and recreation economies rely on well-informed local representatives to protect the community's water at the state and federal levels. To split the Western Slope in any way would compromise the unity required to properly represent water interests in the region. There is also a clear divide between the Western Slope and front range communities, clearly designating western Colorado as a community with unique federal interests. Though many of our communities do not have the tax base of their front range counterparts, they still must provide the essential services of government: safe roads and bridges, law enforcement, public schools, and critical infrastructure with minimal resources. These challenges are not experienced by front range communities where virtually no federally owned lands exist. While federal lands are preserved for the benefit of all Americans, the day-to-day responsibilities of preservation fall upon those who live closest to those lands. These lands are managed for multiple uses – from livestock grazing to energy extraction to outdoor recreation. Over generations, communities on the Western Slope have worked with federal agencies to develop and demonstrate best practices for multi-use lands for the country and these uses are limited to county border. The Western Slope must be maintained as a result. Colorado has more than 24.4 million acres of forestland and many of these forests include the headwaters of rivers that provide reliable, affordable water supplies which are foundational to the environment, economy, and quality of life in rural Colorado. In fact, rangeland and forest are the predominant land uses in the Colorado Basin (85%), with forested land present throughout many parts of the basin. A substantial portion of the basin is comprised of federally owned land, with livestock, grazing, recreation, and timber harvesting as the predominant uses on those lands. A Colorado Statewide Forest Resource Assessment identified 642 watersheds susceptible to damaging wildfire, and 371 forested watersheds with high to very high risk from post-fire erosion, many of these watersheds, encompassing about 9.4 million acres of spruce-fir, aspen and pine forests that contain critical infrastructure for municipal drinking water supplies., ALL of these forests reside west of the continental divide.



The San Luis Valley has unique agriculture interests and should not be divided. This region should be kept whole and united with other communities of interest. All of these above needs are best accomplished through the map released with the preliminary plan in June. I ask the Commission to adopt a map that closely resembles that initial plan. 3. Residents of rural Colorado have unique interests and need representation in Congress whose constituency does not have divided priorities. Our voices deserve to be heard, undiluted by inclusion in a district with suburban and urban residents. Whether agriculture or energy production, public lands, water, natural resources, or cooperative businesses, most of our issues and needs in Congress differ from those of our Front Range urban and suburban friends and fellow Coloradans. We all care about education and transportation, but no rural county has (or will have) light rail, and no urban county will understand the needs of a small ranch operation. We deserve representation in Congress that isn't forced to choose between our needs and the issues that matter to suburbia. The June preliminary plan contains the best map for rural America and will ensure that our voice is heard through two distinct rural districts. Furthermore, if Teller, Park, Chaffee and Fremont counties are no longer going to be in the Fifth Congressional District, then they should be in the Third Congressional District with other communities of interest not lumped in with Jefferson County and other suburban counties with which they have nothing in common. 4. Unfortunately, the first Staff Plan map released on September 3rd ignores the needs of rural America by removing rural counties in the current Third Congressional District that include Moffat, Rio Blanco, Routt, Garfield, Jackson and Grand counties and lumping them in with Boulder and Larimer, two counties with which they have little to nothing in common. This drastic departure from the current Congressional Districts is a disservice to both the residents of the Second and Third Congressional Districts. 5. CD3, as drawn in the preliminary plan released in June, made great improvements that unified communities of interest and shared public policy concerns. Tourism, education, public health, education, transportation, water and other mutual issues of concern for our residents were well represented on that map. I was excited about the possibility of a district that ensured the people of the Third District were well represented and connected. Unfortunately, the first staff plan released September 3rd decimates the rural voice in northwest Colorado and disregards the critical communities of interest that make up the fabric of western Colorado. These recent changes to the map ensure that residents on the other side of the mountains and in Denver who share little in common with us are responsible for making decisions on behalf of rural Coloradans. Whether you are living in Craig, Durango, or Yuma - these changes to the map do not allow our voice to be heard or our interests to be fairly represented. 6. The Rocky Mountains create a natural boundary between the eastern and western parts of the state. The Western Slope has unique infrastructure, outdoor recreation and tourism challenges that unify our counties and communities of interest. Our infrastructure is not mainly centered around growing populations as it is in the front range, but around the mountain passes, rivers, and lands that make up the Western Slope. The heavy snow and other similar weather patterns in the west also connect the similar kinds of needs for roads, which vary from the eastern and front range part of the state. The economy, with regard to tourism and outdoor recreation, of the western slope contains almost all of the ski areas and encompasses what people think of when they think of Colorado: hiking, mountain biking, hunting, camping, fishing, skiing and snowmobiling. It is because of these reasons that I support the preliminary plan for CD-03 released in June. Whether we are speaking regarding shared interests such as our energy grid on the Western Slope, or our values at home, rural Coloradans on the Western Slope cannot be fairly represented without the region being kept intact. Keep the West Slope whole. 7. The preliminary plan released on June 23rd is the fairest map that is consistent with the Congressional Constitutional language approved by voters. The Rocky Mountains provide the obvious divider between the western slope and front range communities. However, once Colorado's water basins and federal lands are taken into consideration, the east-west configuration seems to be the only way to accurately represent Colorado's population across the state. The Western Slope is responsible for the roughly 80% of water that leaves Colorado; this means that those of us who live in the Western Slope are responsible for maintaining the water basins. Water is often a major issue and it is important that we have one Congressman who is able to represent ALL of the water on the Western Slope. Additionally, federal lands comprise more than 55% of the land in western Colorado, which is in stark contrast to the front range. This necessitates the need for a single Congressman, and points to the reality that the daily responsibilities of upkeep for our federal lands are taken on by locals all across the Western Slope; we must be united to tackle these tasks. Please keep the Western Slope intact. 8. As a long-term resident of western Colorado, I always wonder how redistricting will affect our part of the state. The map released with the June 23 preliminary plan respected our way of life and the geographical areas connected to that. The Western Slope is united in many ways, the large amount of federal lands and tourism being some of the top ways. The front range communities steward different types of lands and engage in

different kinds of economic activities than we do on the West Slope, both of which need accurate representation. The preliminary plan serves the West Slope best. I urge the Commission to adopt a map that mirrors than plan. 9. The Western Slope is home to a majority of the state's forests and with the multitude of forest fires in the west slope over the last three decades, it is of utmost importance to keep the western portion of the state together so our representative can most effectively address this issue. Just over 55% of the western land in Colorado is federally-owned, so in order to get the management solutions we need for our forests on a federal level, we must keep the West Slope together. 10. Two rural districts currently make up a large portion of the state, representing various issues, industries and communities that require specific representation. The eastern plains and San Luis Valley are the home to many people that work in agriculture. We need to make sure the agriculture industry maintains a strong voice for these communities of interest at the federal level. Meanwhile, the Western slope is home to significant energy, tourism and public land communities. Ensuring two rural districts that include all communities of interest, as drawn in the map for the June preliminarily plan, will ensure Colorado's urban and rural communities are best served by all of our Representatives. 11. The ski industry is one of the driving forces for tourism in Colorado and unites the western part of our state, as almost all ski resorts are west of the Continental Divide. It makes the most sense to keep all ski areas together in one district. Additionally, the mountainous area in the West that allows for such great skiing also creates unique challenges for infrastructure. While the front range can align infrastructure changes with growing populations, we in the West have to consider geography and weather in addition to population density. Keeping the Western Slope whole will put a Congressman in the best position to improve our infrastructure and best serve our ski communities. 12. Colorado generates over 95-million-acre feet of water annually, and about 10-million-acre feet leave the state through its borders. Of the 10-million-acre feet that leave Colorado, 81%, or 8.1-million-acre feet, exit through the Western Slope. This means that the Western Slope is responsible for stewarding a large portion of Colorado's water, which will be made far more difficult if the Western Slope is split up. Communities like Moffat, Rio Blanco and Garfield will be ignored by their Representative and not receive the attention they deserve, particularly when it comes to water, if they are lumped into the Second Congressional District and removed from the Third. Please keep the Western Slope whole so our water-related issues can best be addressed in Congress.

**John gottlieb**

Commission: congressional

Zip: 81657

Submitted: September 15, 2021

Comment:

To include Eagle County with Boulder is ludicrous. In the first place they are not remotely near each other. Only contiguous counties should be in the same district. Another cogent point is that people of Boulder have about as much in common with the people of Eagle County as oil has with water. There are many other good reasons why they should not be in the same district, but reasonable facts are irrelevant when the decision is being made strictly for political reasons.

**John gottlieb**

Commission: congressional

Zip: 81657

Submitted: September 15, 2021

Comment:

To include Eagle County with Boulder is ludicrous. In the first place they are not remotely near each other. Only contiguous counties should be in the same district. Another cogent point is that people of Boulder have about as much in common with the people of Eagle County as oil has with water. There are many other good reasons why they should not be in the same district, but reasonable facts are irrelevant when the decision is being made strictly for political reasons.

**ANDREW CUOMO**

Commission: congressional

Zip: 81657

Submitted: August 30, 2021

Comment:

I have been a resident of Eagle County for over 35 years. The issues that mountain communities faces are totally different than those of Boulder and the surrounding communities. We need to Redistrict Eagle County to join other mountain communities so our combined voice of the mountain community can be rightfully heard and represented.

**Ross Goldberg**

Commission: congressional

Zip: 81657

Submitted: August 30, 2021

Comment:

I think Eagle County should be part of the Western Slope districting. Currently the line runs right through Eagle county.

[Submit Public Comment](#)

- [1](#)
- [2](#)
- [Next ›](#)
- [Last »](#)

Colorado Independent Redistricting Commissions

[Contact Us](#)

[Commission Staff](#)

[Sign Up for Our Mailing List](#)

[Twitter](#)

[Facebook](#)

[Instagram](#)

General Information

[Find Your US Representative](#)

[Find Your State Legislator](#)  
[US Census Bureau](#)

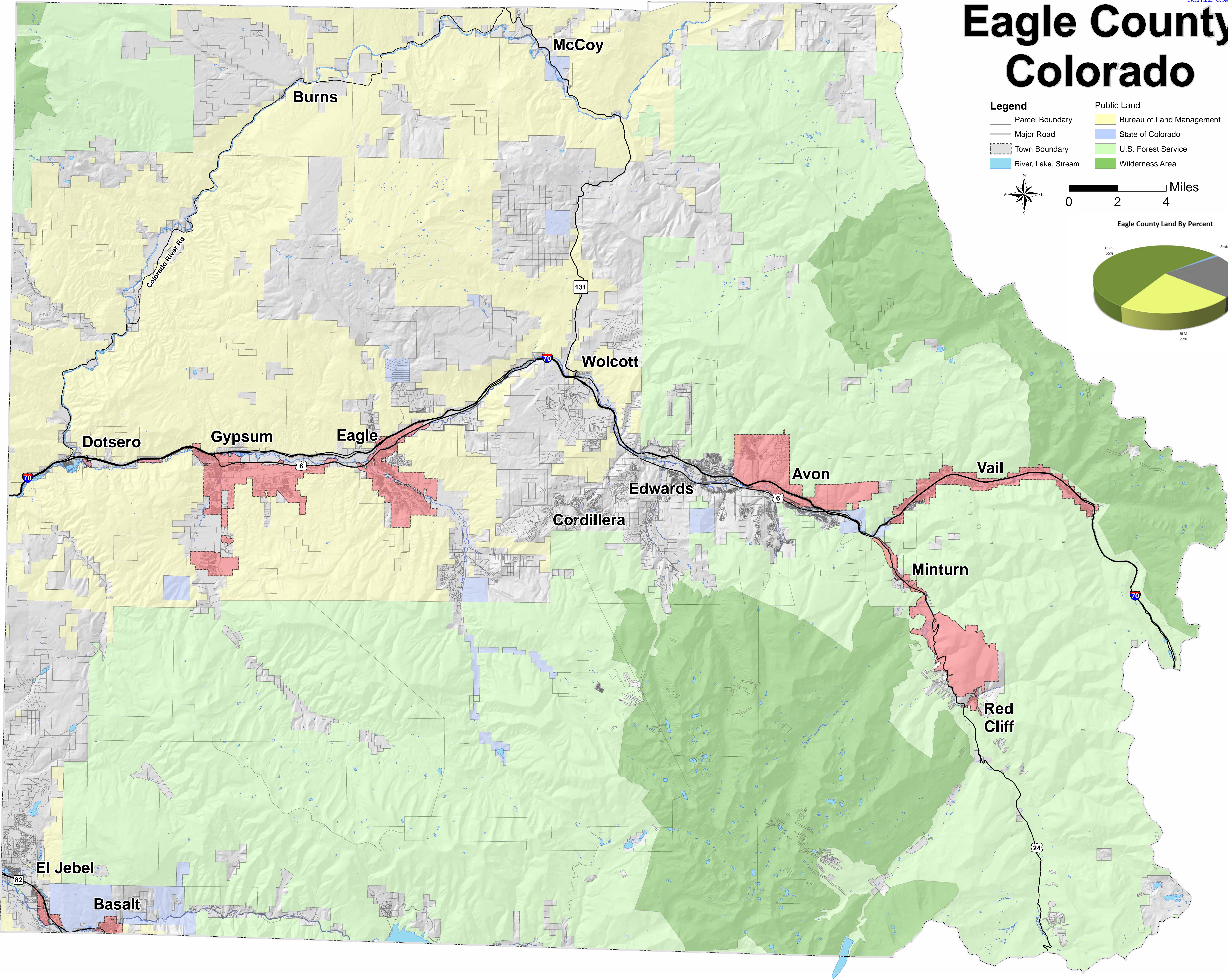
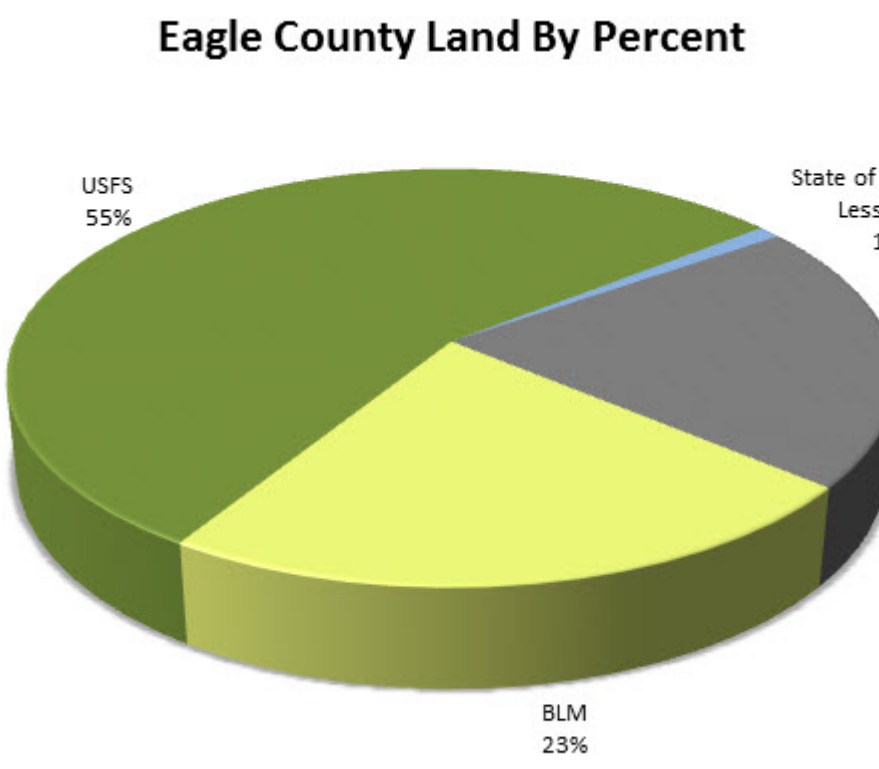
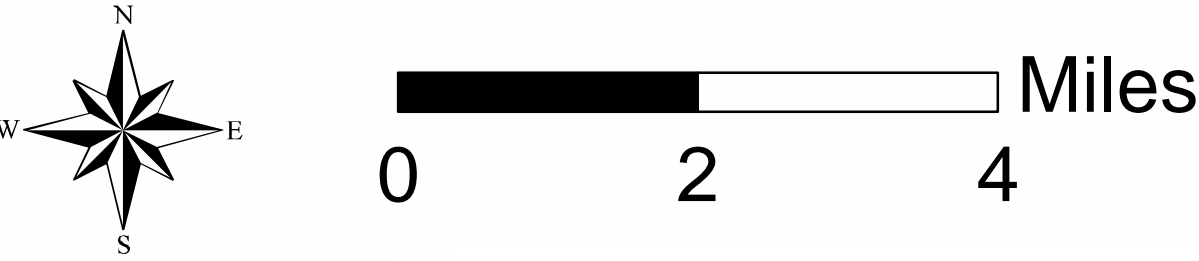
[IT Sign In](#)

RETRIEVED FROM DEMOCRACYDOCKET.COM

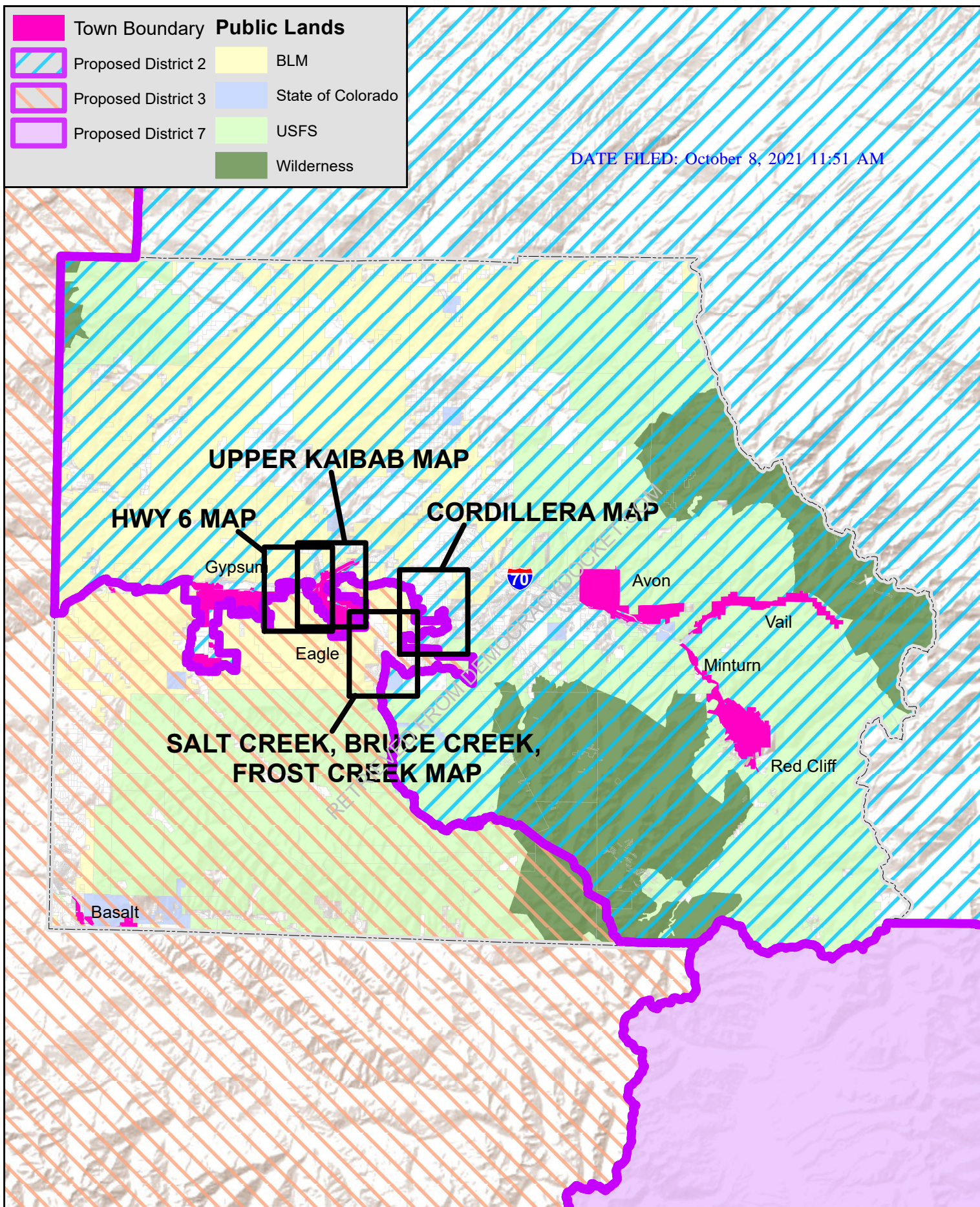


# Eagle County Colorado

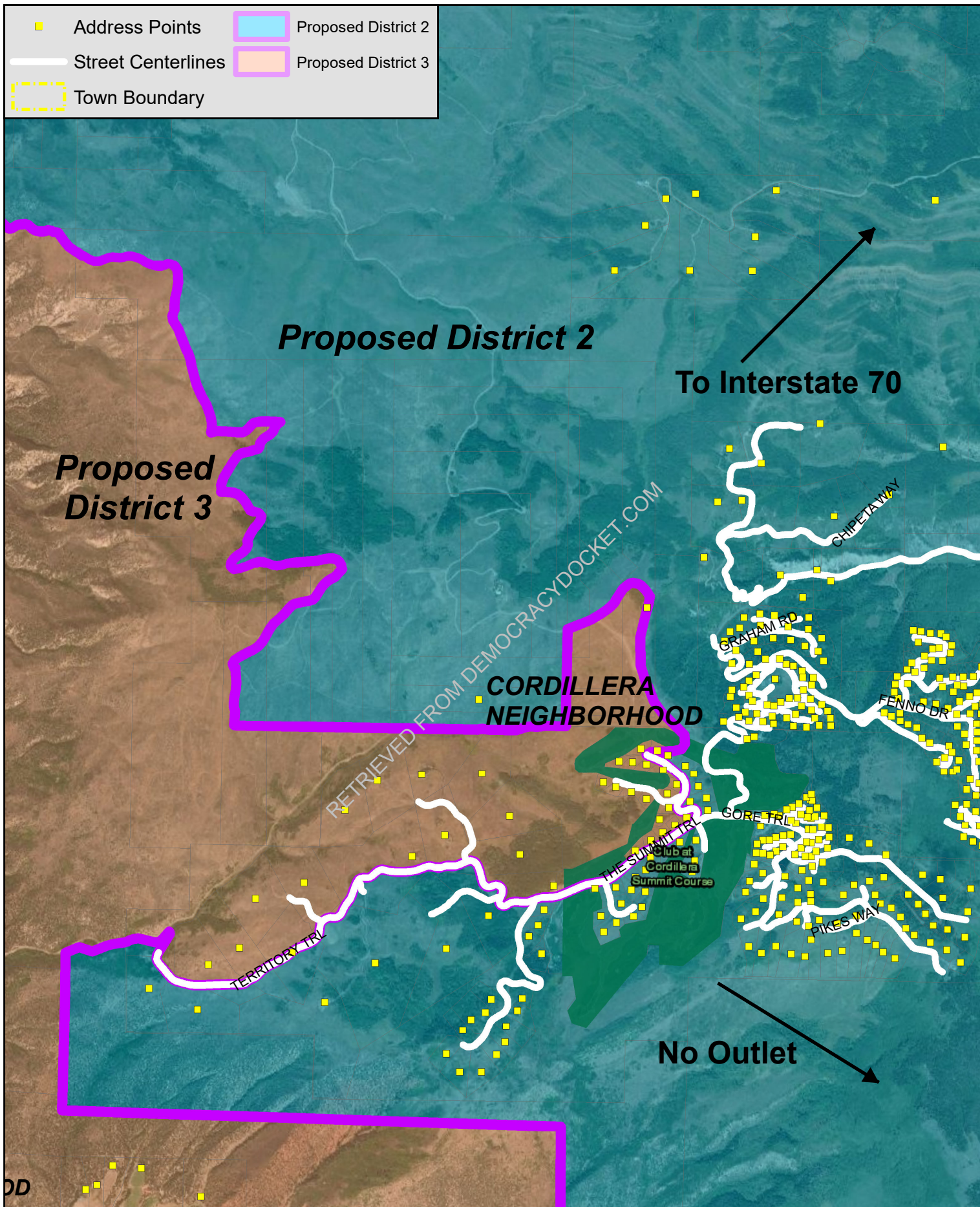
- Legend**
  - Parcel Boundary
  - Major Road
  - Town Boundary
  - River, Lake, Stream
- Public Land**
  - Bureau of Land Management
  - State of Colorado
  - U.S. Forest Service
  - Wilderness Area



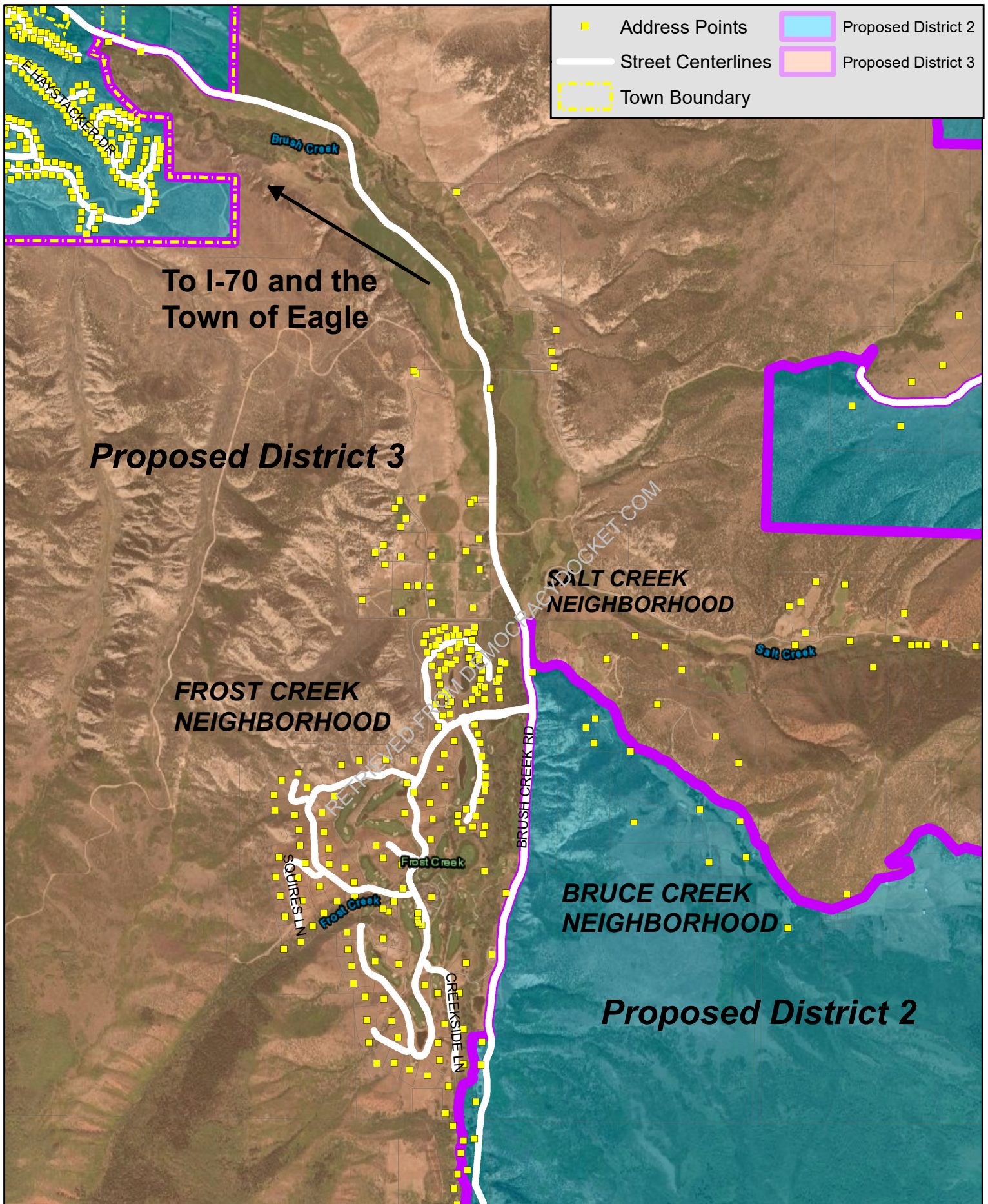






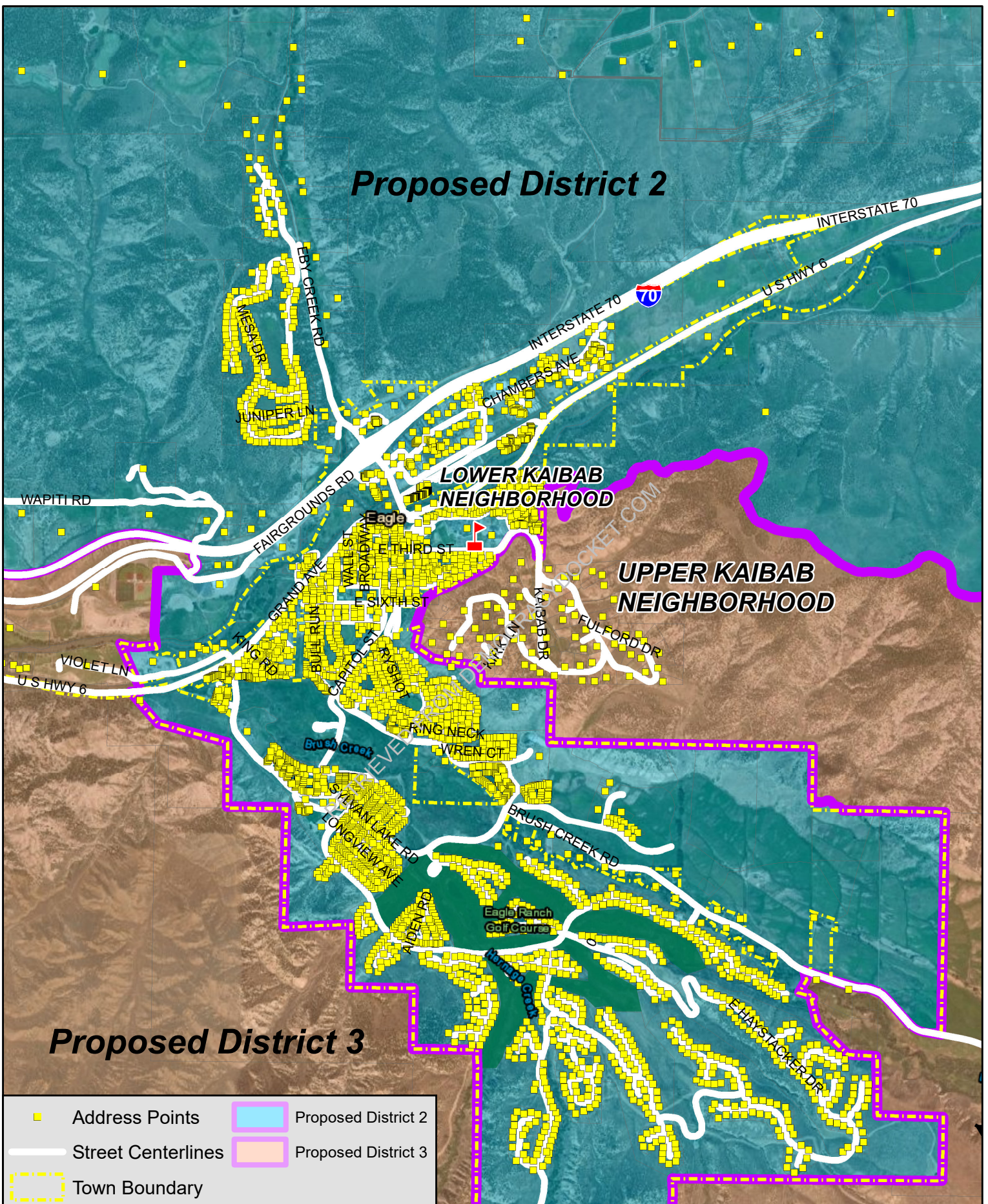




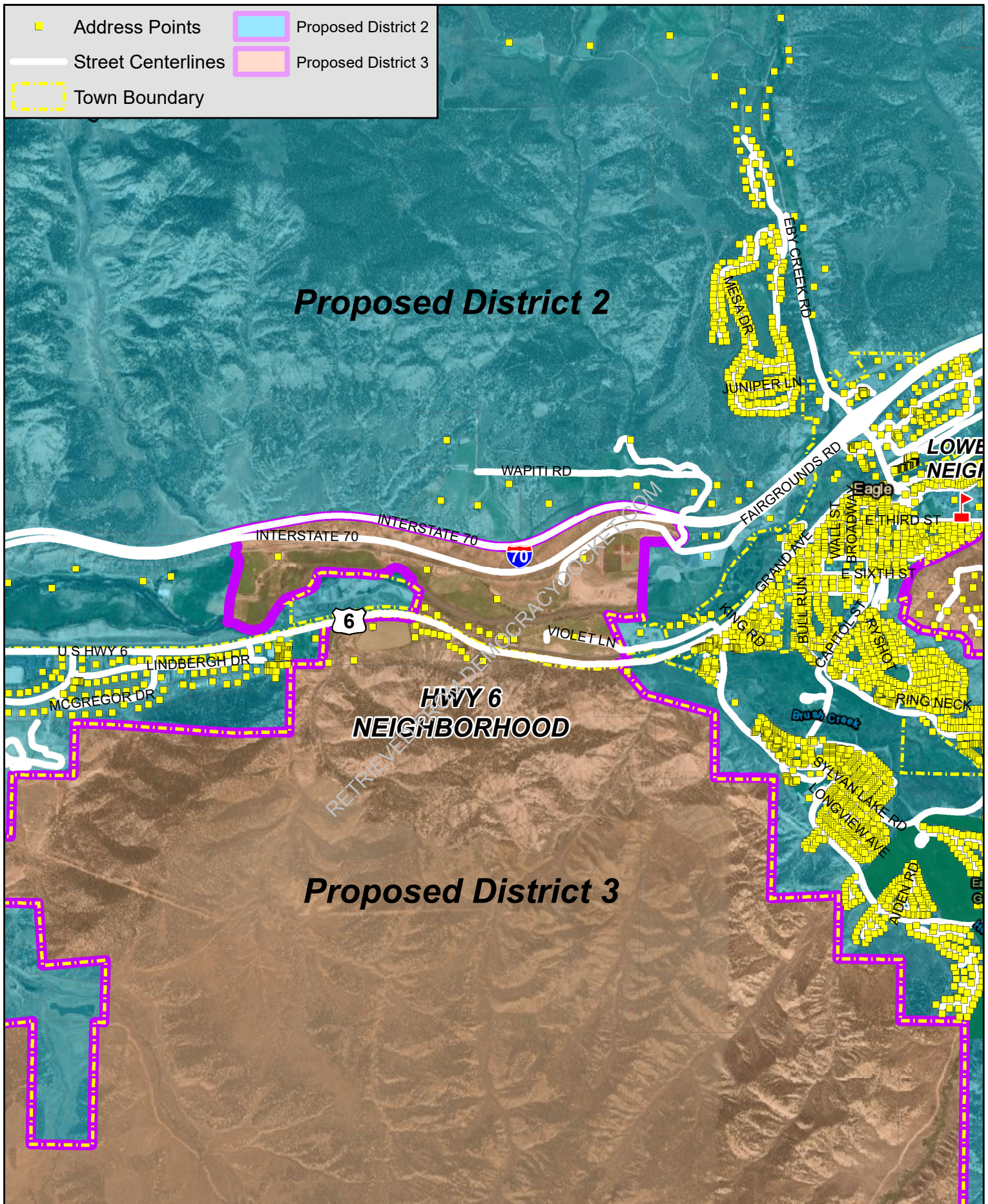




## Proposed District 2









---

**Eagle County - Response to 3rd Staff Plan with Attached Maps - Areas of Concern**

---

**Colorado Redistricting2020** <colorado.redistricting2020@state.co.us>

DATE FILED: October 8, 2021 11:51 AM

Mon, Sep 27, 2021 at 1:29 PM

To: Regina O'Brien &lt;regina.obrien@eaglecounty.us&gt;

Cc: Jessica Shipley &lt;jessika.shipley@state.co.us&gt;, Julia Jackson &lt;julia.jackson@state.co.us&gt;

Ms O'Brien --

Thank you for your submission. Unfortunately, Eagle County is the only County in the proposed Congressional District 3 that is split, meaning we must get the population of the district to within one person by including 10,408 or 10,409 people from Eagle County in that District. We attempted to keep the towns of Gypsum and Eagle whole. While your division of Eagle County makes sense, it does not include the population required to get District 3 to the right population. As you are no doubt aware, trying to find that population in areas other than those along I-70 is difficult. One alternative that might result in eliminating the sliver precincts about which you may be concerned would be to split the Town of Gypsum between Congressional Districts 2 and 3. While not ideal, I know, would that be a better dividing line than the current Third Congressional Staff Plan?

---

**Colorado Independent Redistricting Commissions Staff**

Jeremiah B. Barry, Managing Attorney

cell: 303-916-9724

[colorado.redistricting2020@state.co.us](mailto:colorado.redistricting2020@state.co.us)

For more information about redistricting, please visit our [website](#).



From: "Regina O'Brien" &lt;regina.obrien@eaglecounty.us&gt;

To: [colorado.redistricting2020@state.co.us](mailto:colorado.redistricting2020@state.co.us)

Cc: "Eagle County Elections" &lt;elections@eaglecounty.us&gt;, "Amy Keeley" &lt;amy.keeley@eaglecounty.us&gt;, "Scott Fleming" &lt;scott.fleming@eaglecounty.us&gt;

Date: 09/27/2021 12:23 PM

Subject: Eagle County - Response to 3rd Staff Plan with Attached Maps - Areas of Concern

---

Good Afternoon Redistricting Commission and Staff,

I am the Eagle County Clerk & Recorder and would like to provide critical feedback on the third proposed map.

My understanding is that the intent in this third map was to place the communities that identify more closely with the Roaring Fork Valley (RFV) into CD3 while keeping the remainder of communities along the I-70 corridor together in CD2. However, in this map there are portions of communities which are not at all a part of or can be accessed through the RFV which have been placed into CD3. These areas should be kept with their like communities in CD2. Here are some examples:

- An area in Cordillera (near Edwards) which has been included in CD3, however, this community is most closely aligned with the Edwards area and is roughly 80 miles away (via I-70 through Glenwood Canyon and then south on 82) from the RFV.
- A neighbor named Upper Khabib which is very close to and only accessible through the Town of Eagle has been placed into CD3 and is not with its neighbors in the Town of Eagle who are in CD2. While this area does not show up on a GIS map as being within the Town of Eagle boundaries, it's directly aligned with the Town of Eagle as a community and is very close to one of the local schools.

- Homes sandwiched right between the Town of Eagle and Town of Gypsum along Highway 6 have been placed into CD3 when they are considered part of the neighborhoods of both Towns and not part of the RFV which, again, is 50+ miles away through Glenwood Canyon.
- The Two Rivers area in Dotsero which is east of the Glenwood Canyon, most closely aligned and near the Town of Gypsum, has also been placed into CD3.

In addition to needing to retain like-communities and neighborhoods in the same Congressional district, the other concern that would arise under this current map would be the creation of new voter precincts that, while potentially large in apparent land mass, would be very small in population. This has the potential to create ballot anonymity issues for voters in smaller precincts with ballot races and measures that would be hard to mask. One of our shared goals should be to help mitigate such issues.

I am aware and appreciated the extremely difficult and tight timeline the Commission and staff are under to make changes. As such, the Eagle County GIS department has put together a map of our suggestions for how to fix the issues listed above. The first map attached provides an overview of the proposed third map, and the second attachment shows changes proposed by our team. Overall, the proposed Eagle County map uses current precinct (precincts 7,8,24 & 25), geographical, and neighborhood boundaries to keep logical areas together between CD 2 and CD 3.

If it would help to discuss any of these areas of deep concern in detail, we'd be happy to review these proposed maps via Zoom and dive into the specific neighborhoods which should remain in CD2. Please let me know how we can help support in this effort to create boundaries that make sense for communities and voters.

Thank you,

Regina O'Brien  
Eagle County Clerk & Recorder

970.328.8783 | Direct line  
970.328.8716 | Fax  
500 Broadway / PO Box 537 Eagle, CO 81631  
[www.eaglecounty.us/clerk](http://www.eaglecounty.us/clerk)

THIS MESSAGE IS INTENDED ONLY FOR THE USE OF THE INDIVIDUAL OR ENTITY TO WHICH IT IS ADDRESSED AND MAY CONTAIN INFORMATION THAT IS PRIVILEGED, CONFIDENTIAL AND EXEMPT FROM DISCLOSURE UNDER APPLICABLE LAW. If the reader of this email is not the intended recipient, you are hereby notified that any dissemination, distribution, forwarding, copying of or taking action in reliance on the contents of this email is strictly prohibited. If you received this email in error, please notify the sender by email or telephone, and delete the original message immediately. Thank you.

[attachment "ResponseToState.pdf" deleted by Jerry Barry/CLICS] [attachment "ResponseToStateCountyProposal.pdf" deleted by Jerry Barry/CLICS]